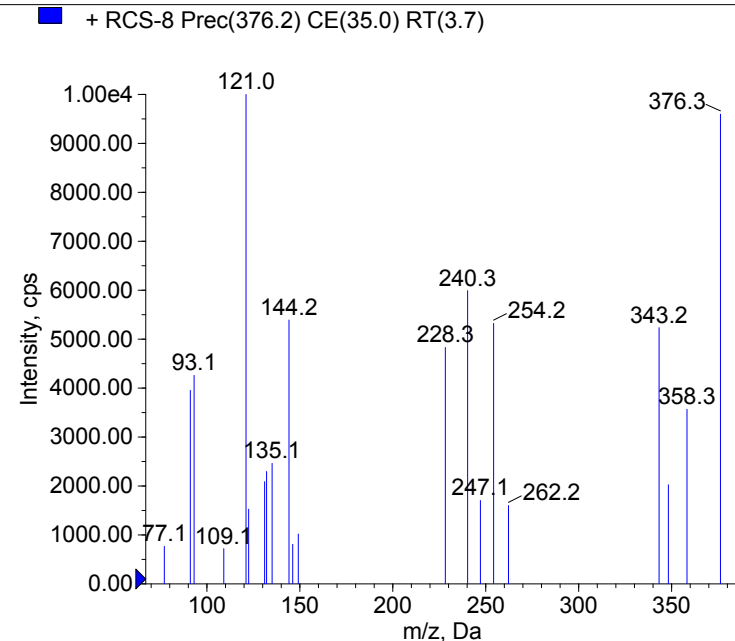
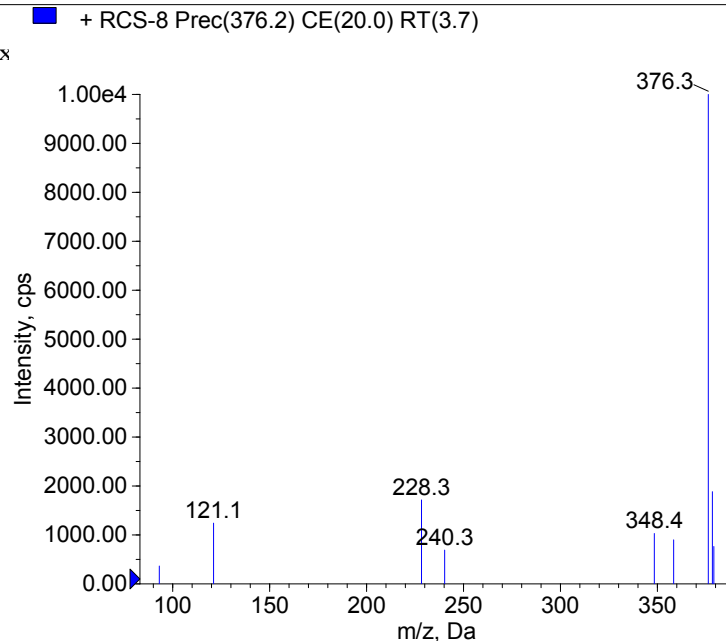
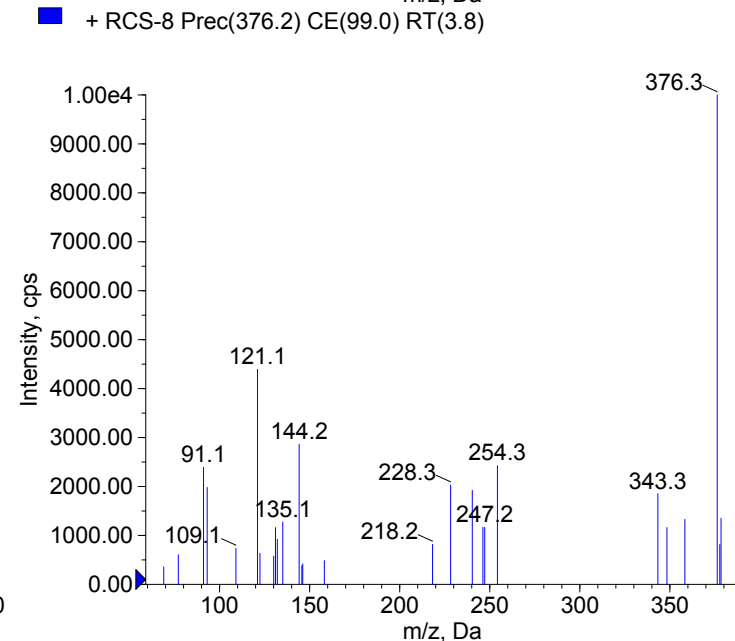
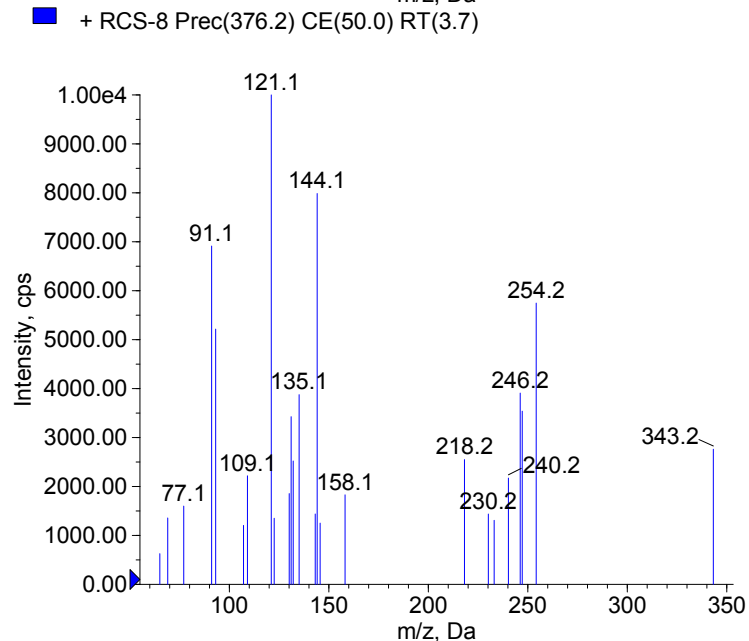


Compound Name: RCS-8  
 Synonyms: 1-(2-cyclohexylethyl)-3-(2-methox  
 Formula: C<sub>25</sub>H<sub>29</sub>NO<sub>2</sub>  
 CAS Number: 1345970-42-4  
 Molecular weight(Da): 375.2198  
 Compound Class: Synthetic Cannabinoids  
 Compound ID:  
 User Value: 0.0000  
 Keyword:  
 Internal Standard: No  
 Comment1: 375.219829



Instrument Model: 3200 Q TRAP  
 Ion Source: Turbo Spray  
 Polarity: Positive  
 Scan Type: EPI  
 1st Precursor m/z: 376.2000  
 Collision Energy1(V): 20.0000  
 Charge State1: 1  
 CAD Gas Type:  
 CAD Gas Value: Level 4  
 Retention Time(min): 3.70  
 Resolution: unit  
 Comment2:  
 Comment3:



© 2012-2015 University of Bern  
 Lars Ambach, Wolfgang Weinmann  
 www.irm.unibe.ch

Comment1: monoisotopic mass  
 "CE(99.0)": CE spread 35 +/- 15 eV

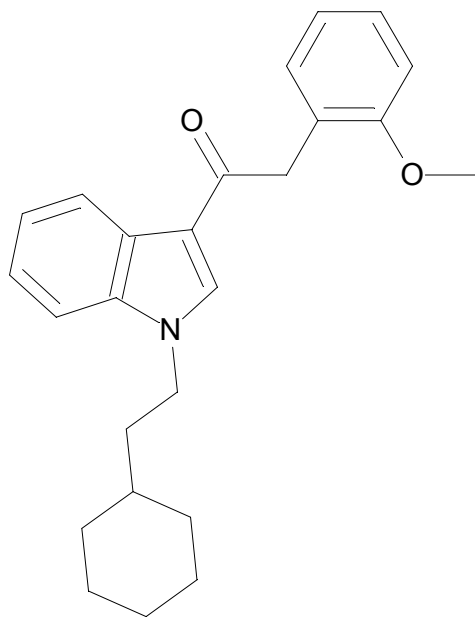
C25H29NO2

Chemist Name:

Project Name:

Workbook Name:

Workbook Page:



© 2012-2015 University of Bern  
Lars Ambach, Wolfgang Weinmann  
[www.irm.unibe.ch](http://www.irm.unibe.ch)

Comment1: monoisotopic mass  
"CE(99.0)": CE spread 35 +/- 15 eV