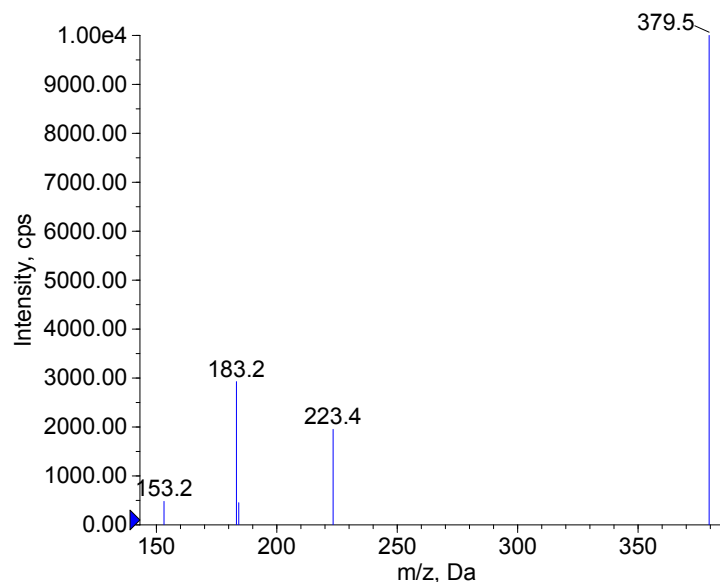
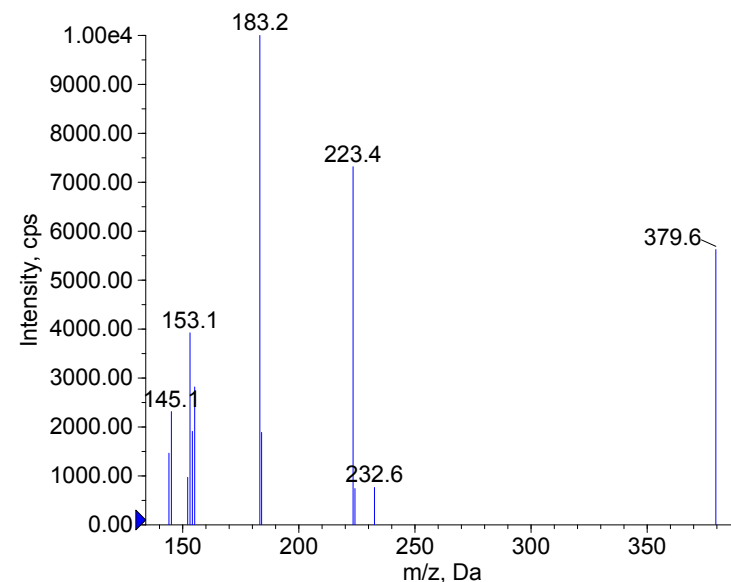


Compound Name: JWH-210-D9
 Synonyms:
 Formula: C₂₆H_{18.2}H₉NO
 CAS Number: 1651833-52-1
 Molecular weight(Da): 378.2658
 Compound Class: Synthetic Cannabinoids
 Compound ID:
 User Value: 0.0000
 Keyword:
 Internal Standard: Yes
 Comment1: 378.265755

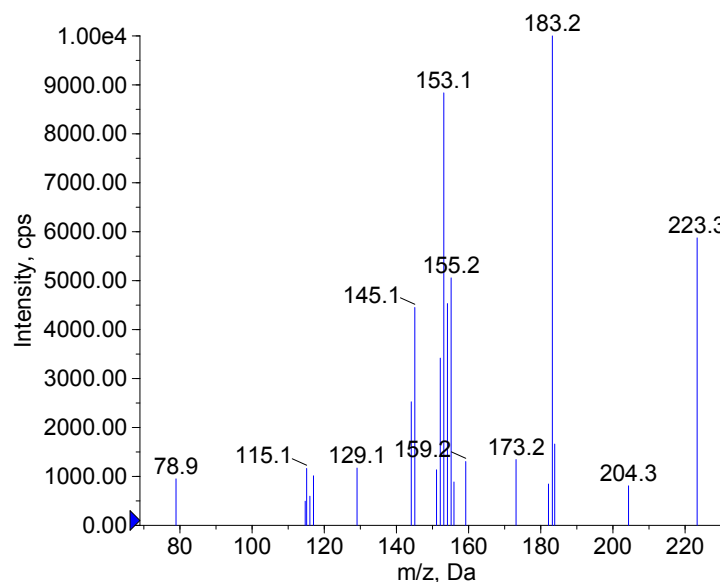
■ + JWH-210-D9 Prec(379.2) CE(20.0) RT(0.3)



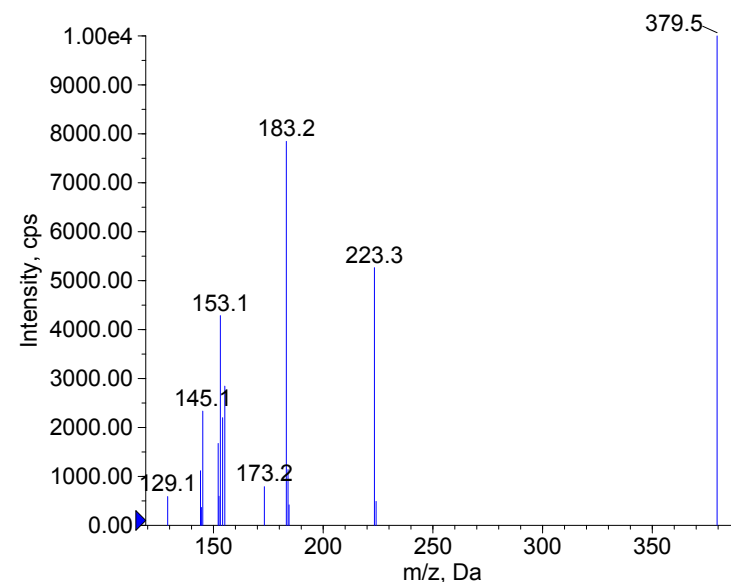
■ + JWH-210-D9 Prec(379.2) CE(35.0) RT(0.3)



■ + JWH-210-D9 Prec(379.2) CE(50.0) RT(0.3)



■ + JWH-210-D9 Prec(379.2) CE(99.0) RT(0.3)



Instrument Model: 4000 Q TRAP
 Ion Source: Turbo Spray
 Polarity: Positive
 Scan Type: EPI
 1st Precursor m/z: 379.2000
 Collision Energy1(V): 20.0000
 Charge State1: 1
 CAD Gas Type:
 CAD Gas Value: 6.0000
 Retention Time(min): 0.30
 Resolution: unit
 Comment2:
 Comment3:

© 2012-2015 University of Bern
 Lars Ambach, Wolfgang Weinmann
 www.irm.unibe.ch

Comment1: monoisotopic mass
 "CE(99.0)": CE spread 35 +/- 15 eV

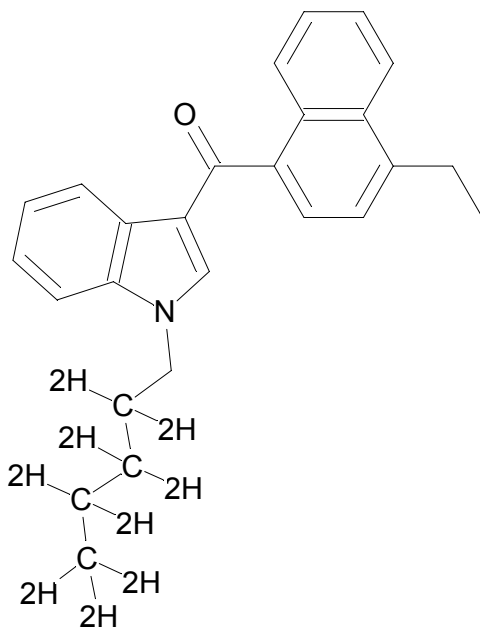
C26H18.2H9NO

Chemist Name:

Project Name:

Workbook Name:

Workbook Page:



© 2012-2015 University of Bern
Lars Ambach, Wolfgang Weinmann
www.irm.unibe.ch

Comment1: monoisotopic mass
"CE(99.0)": CE spread 35 +/- 15 eV