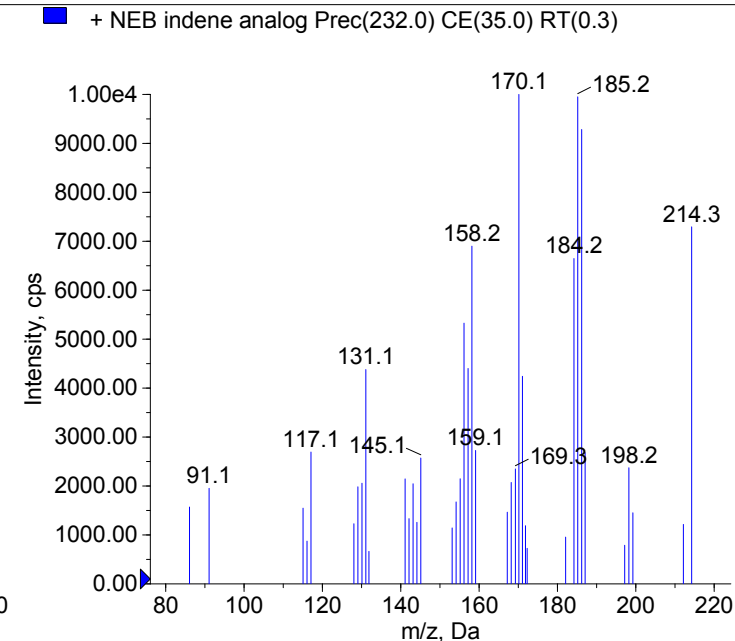
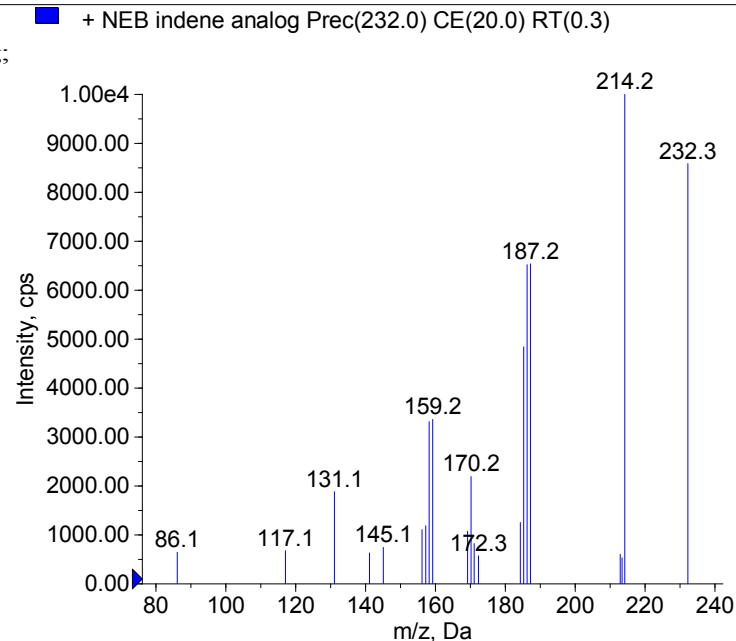


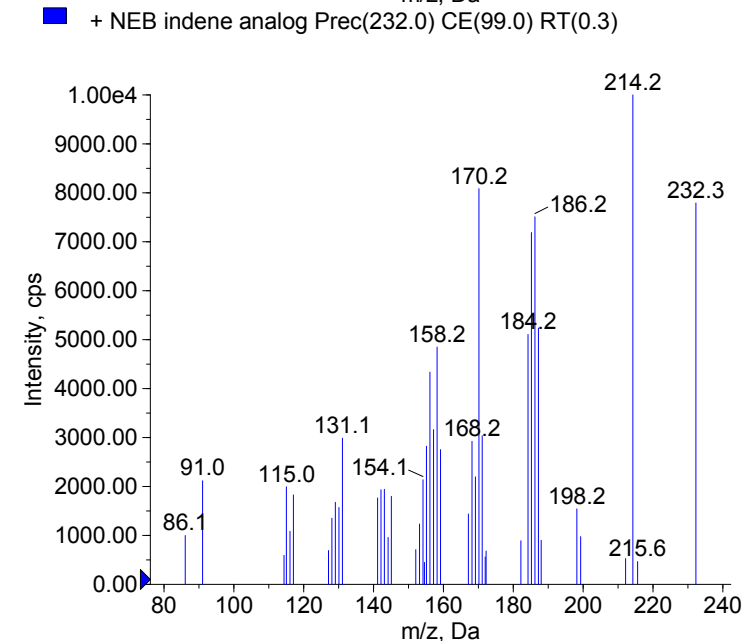
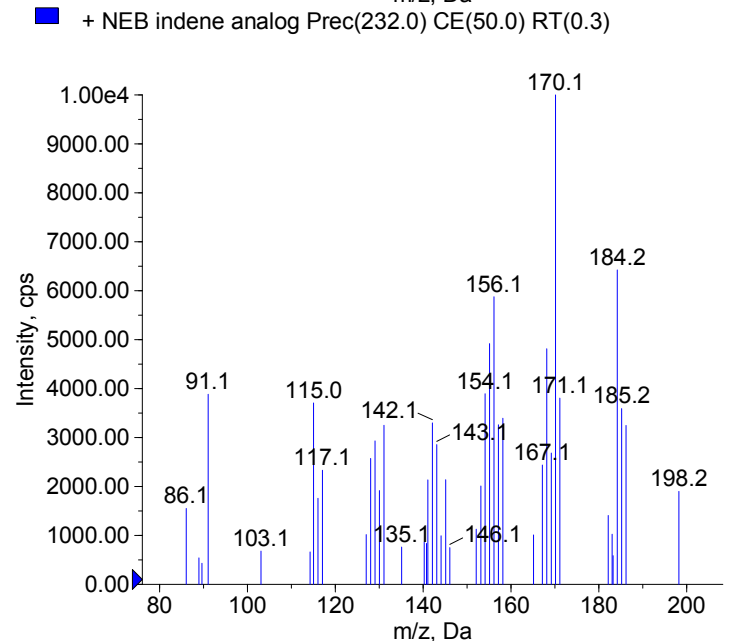
Compound Name: NEB indene analog
Synonyms: N-ethylbuphedrone-indene-analog;
Formula: C15H21NO
CAS Number:
Molecular weight(Da):231.1623
Compound Class: Cathinone
Compound ID:
User Value: 0.0000
Keyword:
Internal Standard: No
Comment1: 231.162314



Instrument Model: 4000 Q TRAP
Ion Source: Turbo Spray
Polarity: Positive
Scan Type: EPI
1st Precursor m/z: 232.0000
Collision Energy1(V): 20.0000
Charge State1: 1
CAD Gas Type:
CAD Gas Value: 6.0000
Retention Time(min): 0.30
Resolution: unit
Comment2:
Comment3:

© 2016-2017 University of Bern
Katharina Grafinger, Wolfgang Weinmann
www.irm.unibe.ch

Comment1: monoisotopic mass
"CE(99.0)": CE spread 35 +/- 15 eV



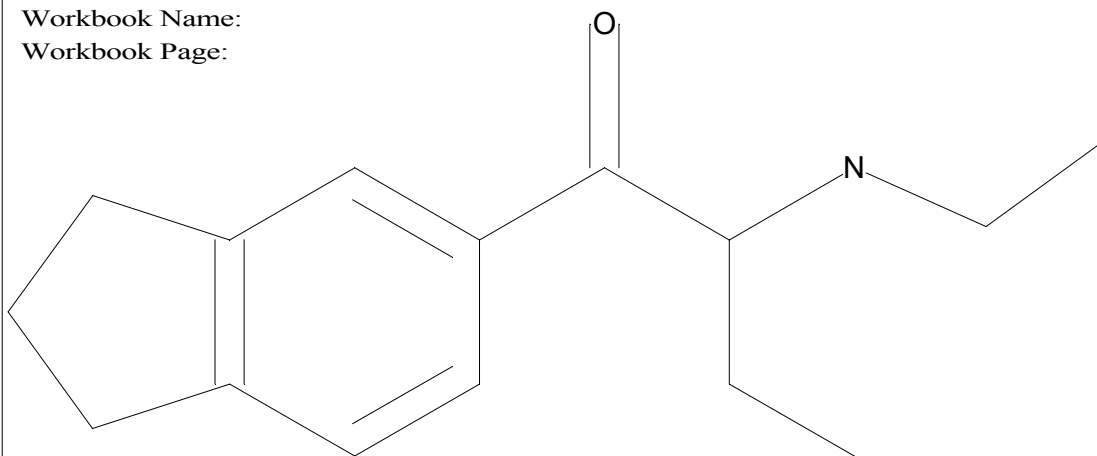
C15H21NO

Chemist Name:

Project Name:

Workbook Name:

Workbook Page:



© 2016-2017 University of Bern
Katharina Grafinger, Wolfgang Weinmann
www.irm.unibe.ch

Comment1: monoisotopic mass
"CE(99.0)": CE spread 35 +/- 15 eV