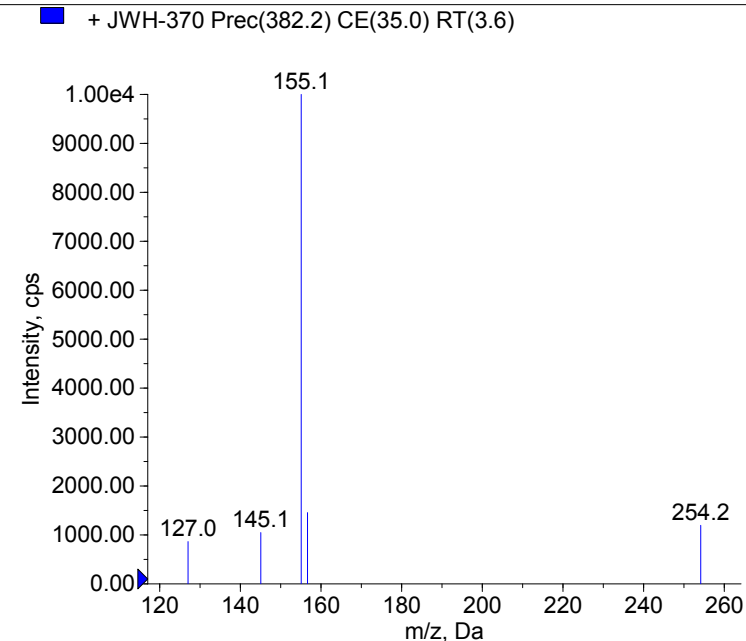
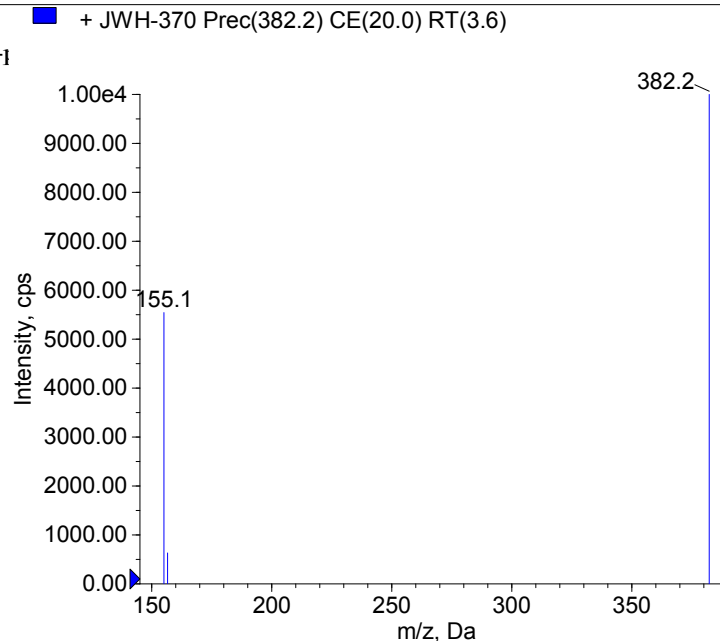
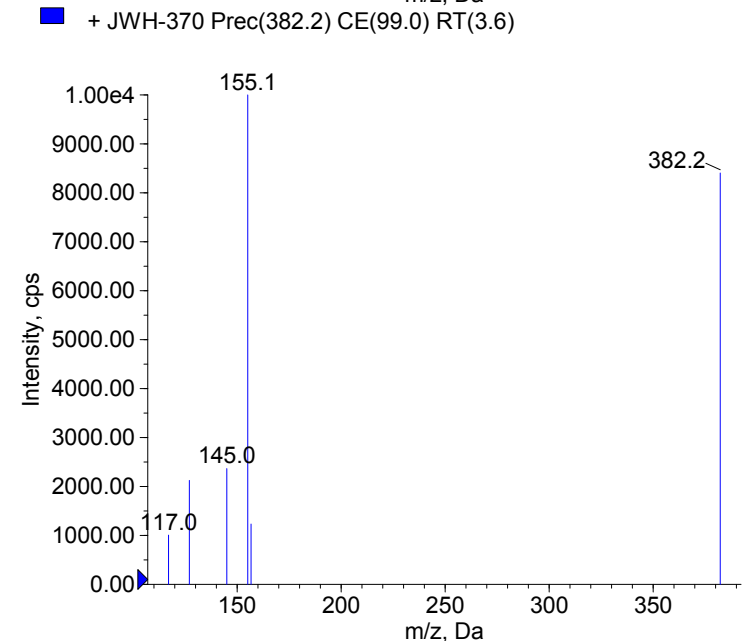
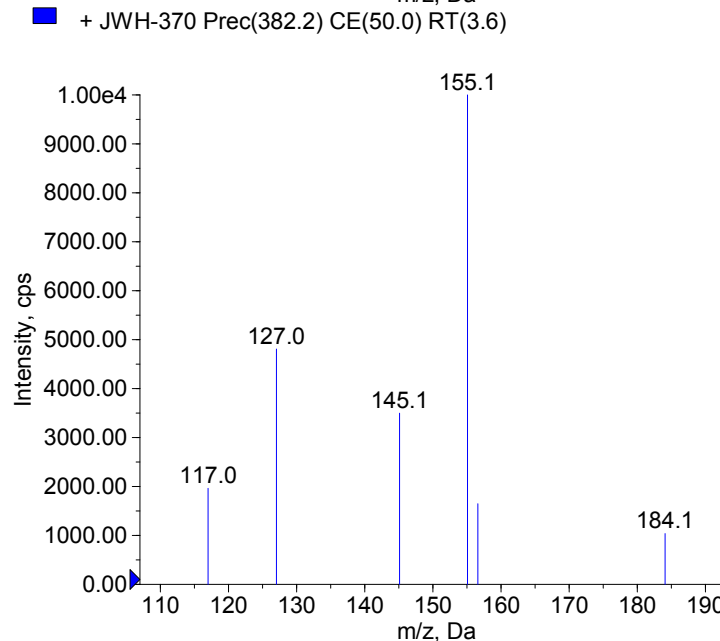


Compound Name: JWH-370
Synonyms: [5-(2-methylphenyl)-1-pentyl-1H-] Cc1ccc(cc1)CCCC
Formula: C₂₇H₂₇NO
CAS Number: 914458-22-3
Molecular weight(Da): 381.2093
Compound Class: Synthetic Cannabinoids
Compound ID:
User Value: 0.0000
Keyword:
Internal Standard: No
Comment1: 381.209264



Instrument Model: 3200 Q TRAP
Ion Source: Turbo Spray
Polarity: Positive
Scan Type: EPI
1st Precursor m/z: 382.2000
Collision Energy1(V): 20.0000
Charge State1: 1
CAD Gas Type:
CAD Gas Value: Level 4
Retention Time(min): 3.60
Resolution: unit
Comment2:
Comment3:



© 2012-2015 University of Bern
Lars Ambach, Wolfgang Weinmann
www.irm.unibe.ch

Comment1: monoisotopic mass
"CE(99.0)": CE spread 35 +/- 15 eV

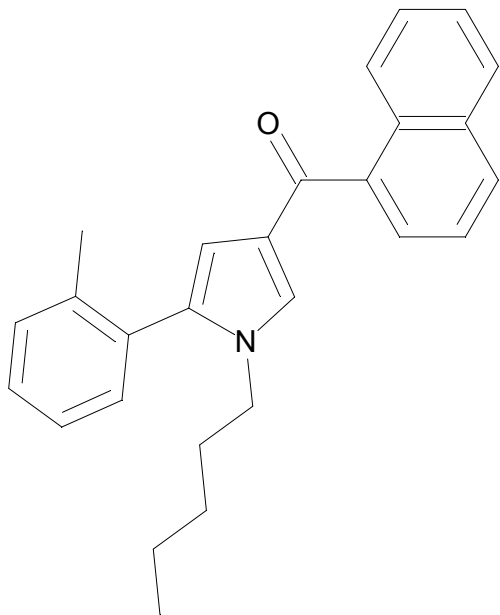
C27H27NO

Chemist Name:

Project Name:

Workbook Name:

Workbook Page:



© 2012-2015 University of Bern
Lars Ambach, Wolfgang Weinmann
www.irm.unibe.ch

Comment1: monoisotopic mass
"CE(99.0)": CE spread 35 +/- 15 eV