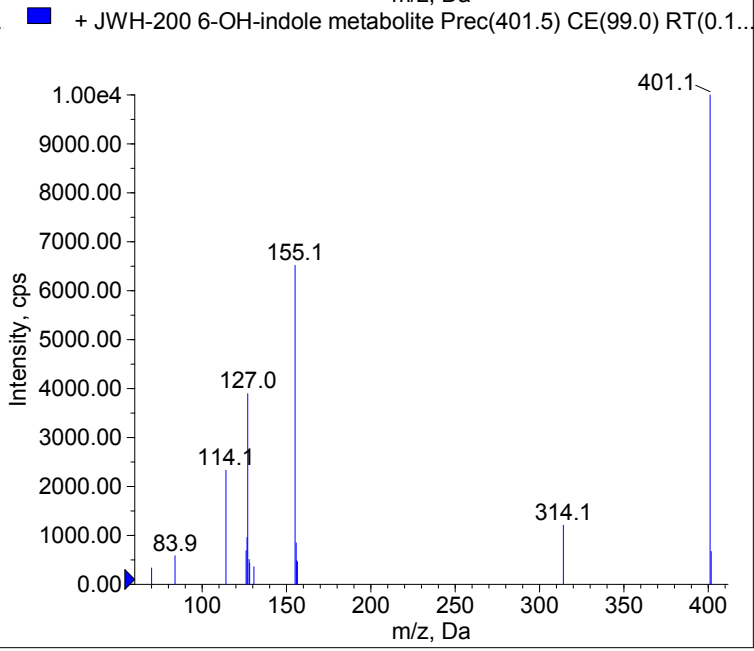
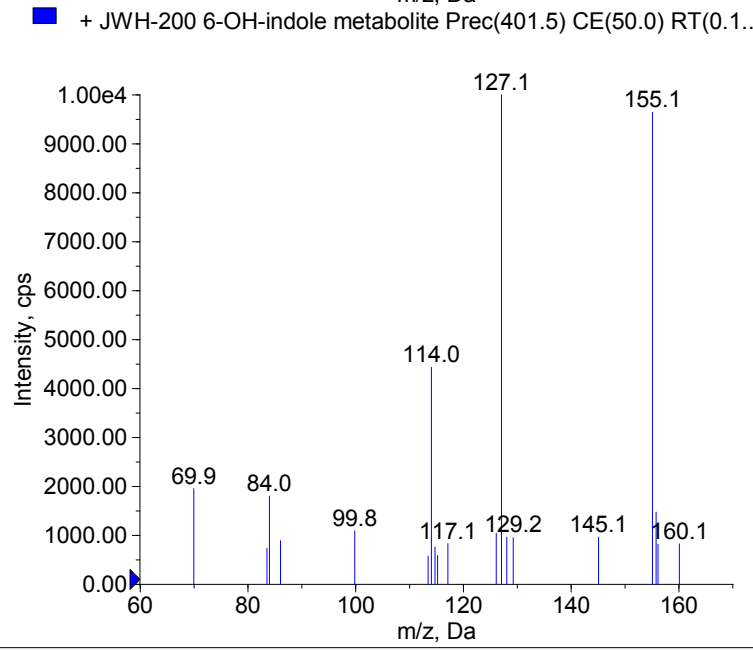
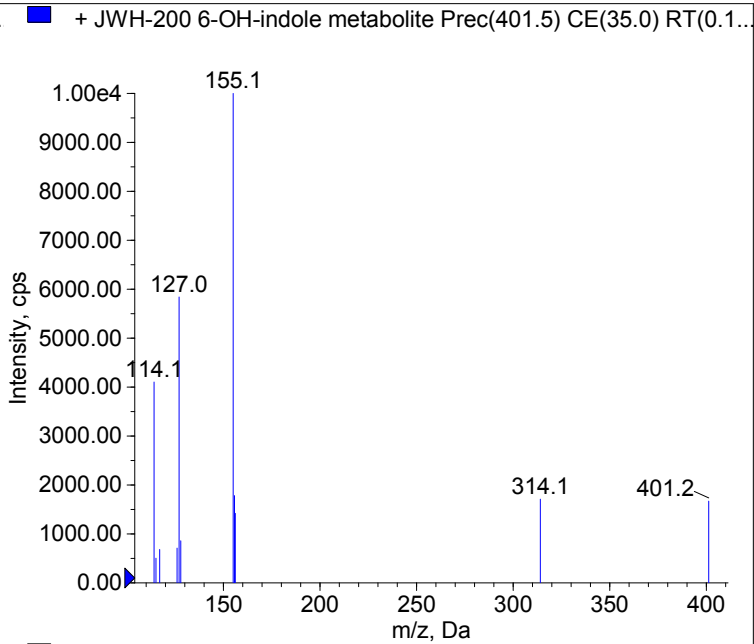
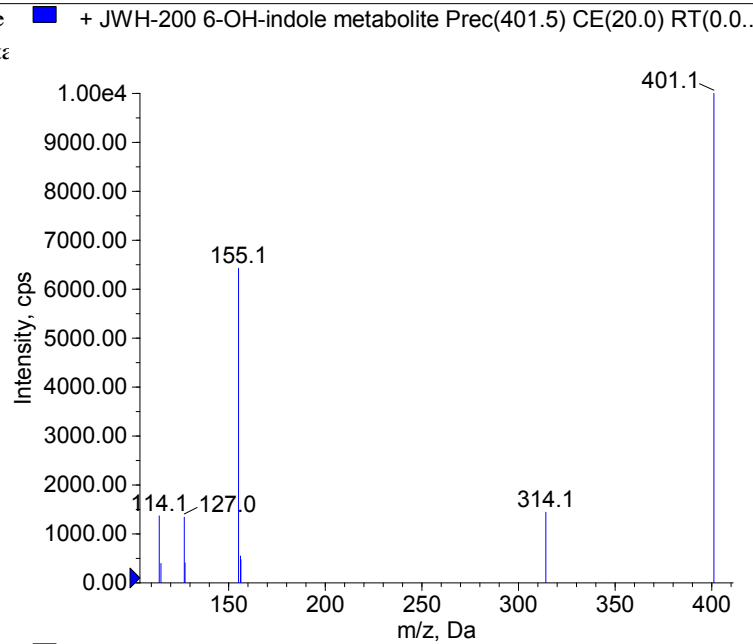


Compound Name: JWH-200 6-OH-indole metabolite  
 Synonyms: WIN 55,225 6-hydroxyindole met  
 Formula: C<sub>25</sub>H<sub>24</sub>N<sub>2</sub>O<sub>3</sub>  
 CAS Number: 1427325-76-5  
 Molecular weight(Da): 400.1787  
 Compound Class: Synthetic Cannabinoids  
 Compound ID:  
 User Value: 0.0000  
 Keyword:  
 Internal Standard: No  
 Comment1: 400.178693



Instrument Model: QTRAP 5500  
 Ion Source: Turbo Spray  
 Polarity: Positive  
 Scan Type: EPI  
 1st Precursor m/z: 401.5000  
 Collision Energy1(V): 20.0000  
 Charge State1: 1  
 CAD Gas Type:  
 CAD Gas Value: Level 4  
 Retention Time(min): 0.00  
 Resolution: unit  
 Comment2:  
 Comment3:

© 2012-2015 University of Bern  
 Lars Ambach, Wolfgang Weinmann  
 www.irm.unibe.ch

Comment1: monoisotopic mass  
 "CE(99.0)": CE spread 35 +/- 15 eV

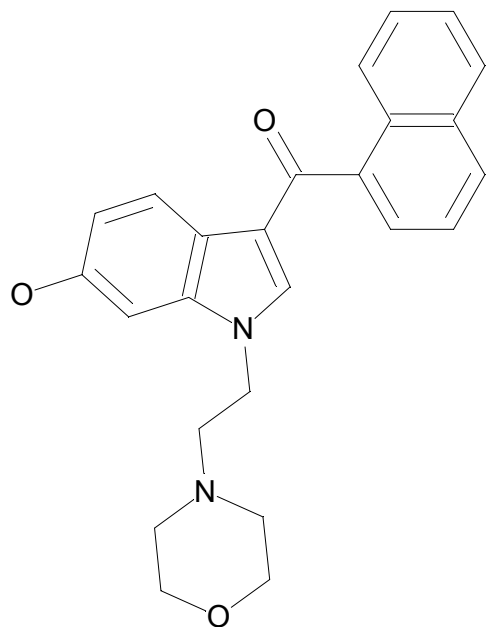
C25H24N2O3

Chemist Name:

Project Name:

Workbook Name:

Workbook Page:



© 2012-2015 University of Bern  
Lars Ambach, Wolfgang Weinmann  
[www.irm.unibe.ch](http://www.irm.unibe.ch)

Comment1: monoisotopic mass  
"CE(99.0)": CE spread 35 +/- 15 eV