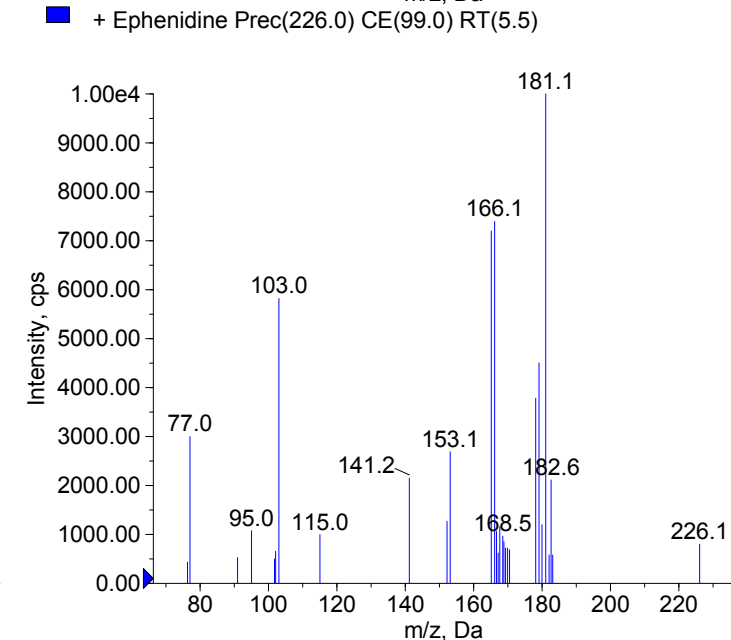
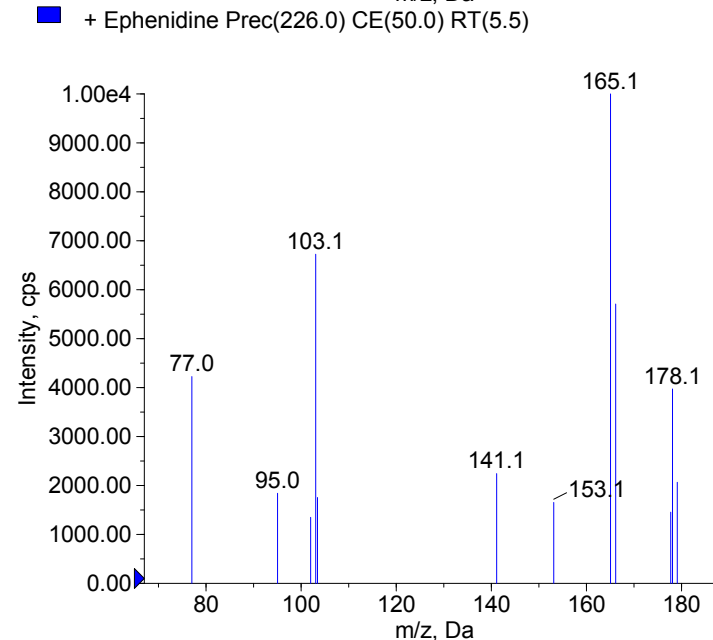
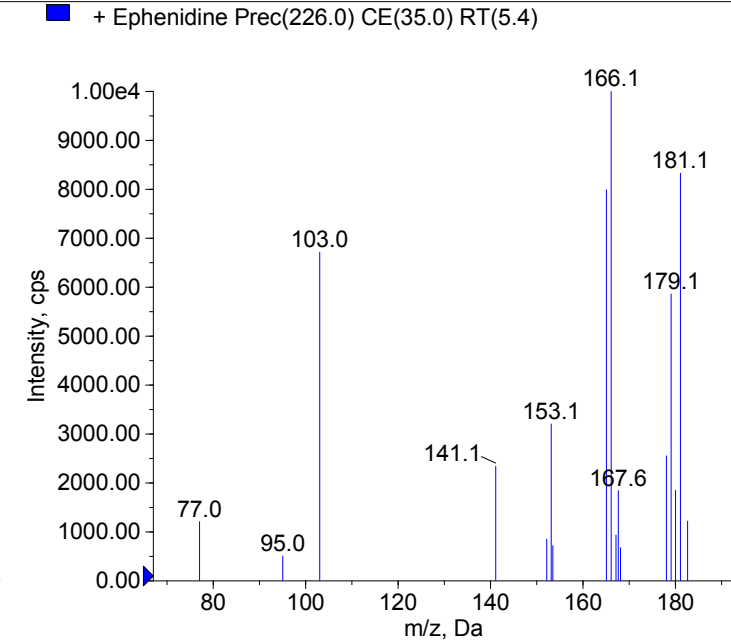
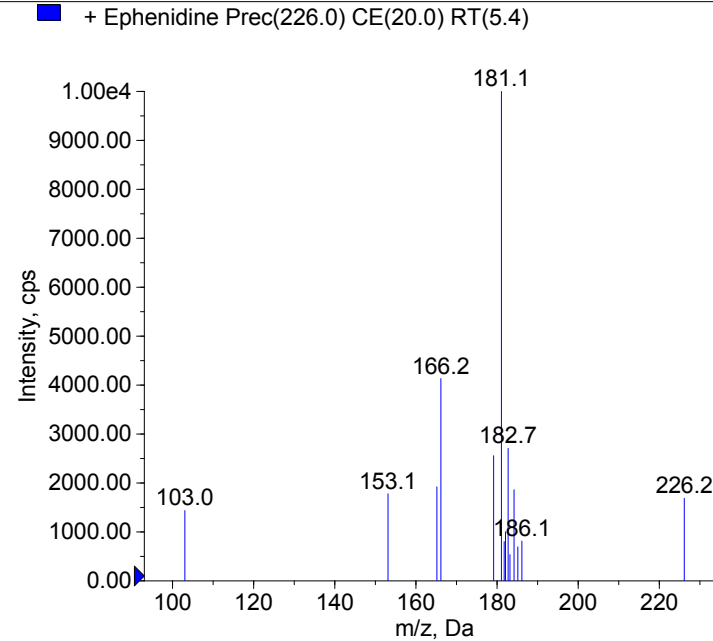


Compound Name: Ephedrine
Synonyms: NEDPA; EPE;
Formula: C16H19N
CAS Number: 60951-19-1
Molecular weight(Da):225.1517
Compound Class: Phenethylamine
Compound ID:
User Value: 0.0000
Keyword:
Internal Standard: No
Comment1: 225.151750

Instrument Model: 3200 Q TRAP
Ion Source: Turbo Spray
Polarity: Positive
Scan Type: EPI
1st Precursor m/z: 226.0000
Collision Energy1(V): 20.0000
Charge State1: 1
CAD Gas Type:
CAD Gas Value: Level 4
Retention Time(min): 5.40
Resolution: unit
Comment2:
Comment3:

© 2016-2017 University of Bern
Katharina Grafinger, Wolfgang Weinmann
www.irm.unibe.ch

Comment1: monoisotopic mass
"CE(99.0)": CE spread 35 +/- 15 eV



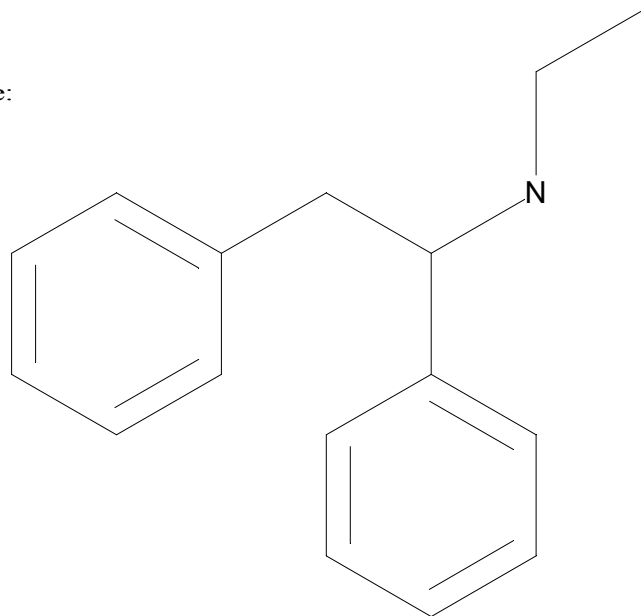
C16H19N

Chemist Name:

Project Name:

Workbook Name:

Workbook Page:



© 2016-2017 University of Bern
Katharina Grafinger, Wolfgang Weinmann
www.irm.unibe.ch

Comment1: monoisotopic mass
"CE(99.0)": CE spread 35 +/- 15 eV