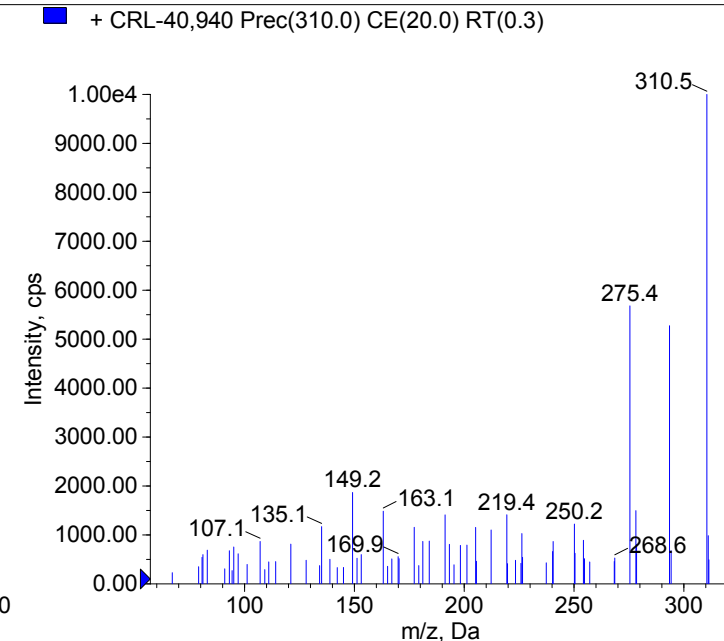
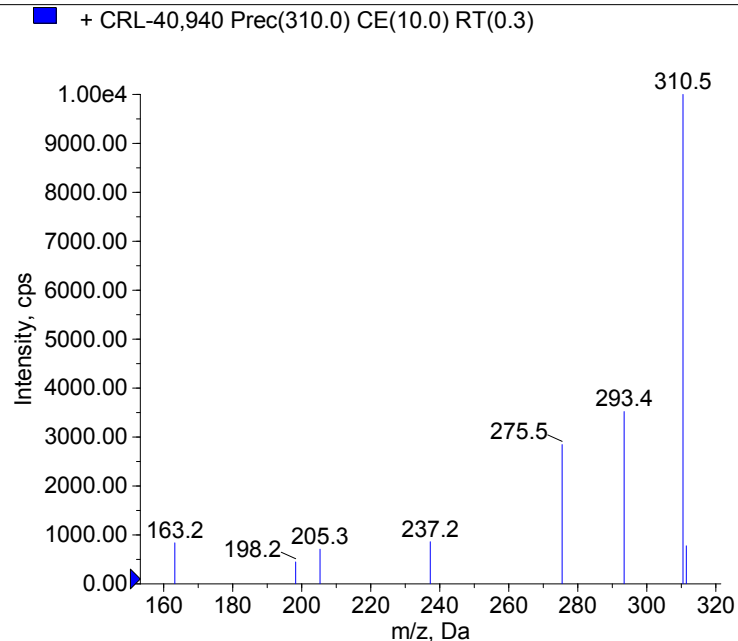
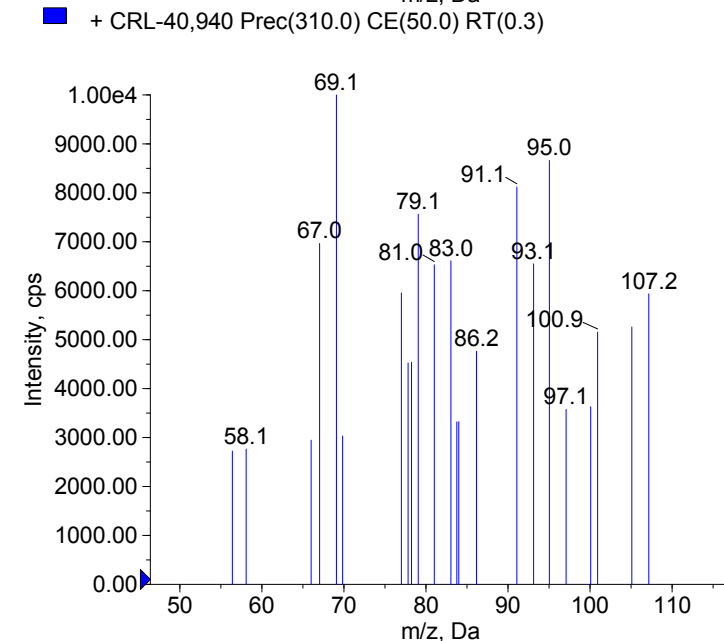
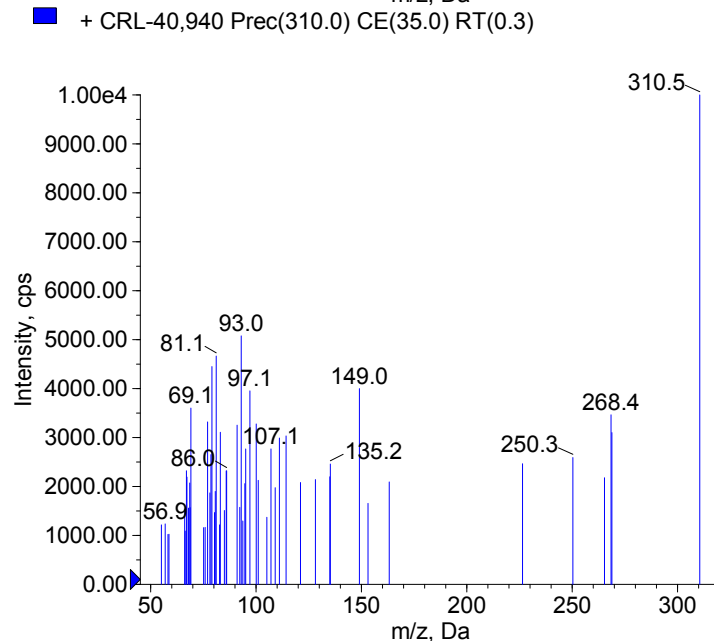


Compound Name: CRL-40,940
Synonyms: FL-Modafinil;
Formula: C₁₅H₁₃F₂NO₂S
CAS Number: 90280-13-0
Molecular weight(Da):309.0635
Compound Class: other
Compound ID:
User Value: 0.0000
Keyword:
Internal Standard: No
Comment1: 309.063505

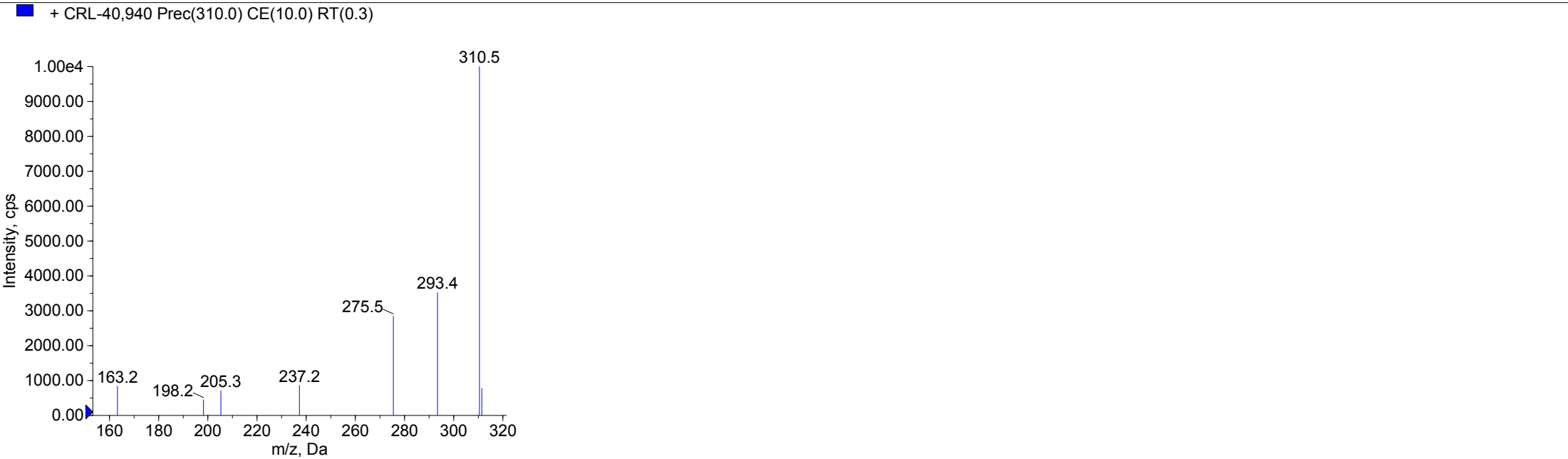


Instrument Model: 4000 Q TRAP
Ion Source: Turbo Spray
Polarity: Positive
Scan Type: EPI
1st Precursor m/z: 310.0000
Collision Energy1(V): 10.0000
Charge State1: 1
CAD Gas Type:
CAD Gas Value: 6.0000
Retention Time(min): 0.30
Resolution: unit
Comment2:
Comment3:



© 2016-2017 University of Bern
Katharina Grafinger, Wolfgang Weinmann
www.irm.unibe.ch

Comment1: monoisotopic mass
"CE(99.0)": CE spread 35 +/- 15 eV



© 2016-2017 University of Bern
Katharina Grafinger, Wolfgang Weinmann
www.irm.unibe.ch

Comment1: monoisotopic mass
"CE(99.0)": CE spread 35 +/- 15 eV

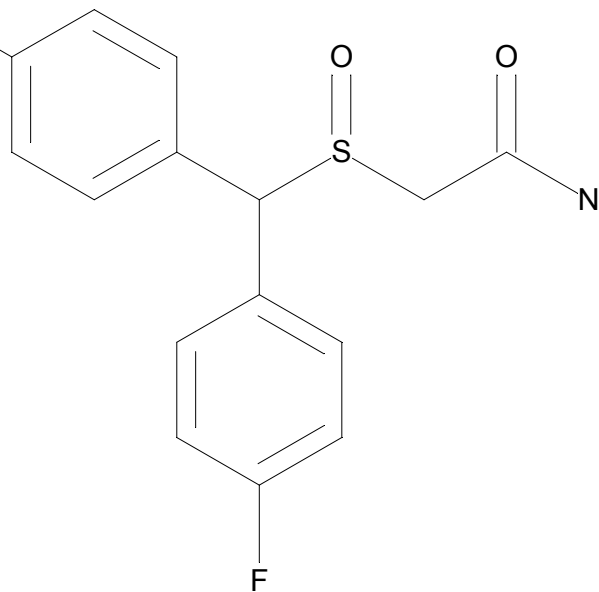
C15H13NO2F2S

Chemist Name: F

Project Name:

Workbook Name:

Workbook Page:



© 2016-2017 University of Bern
Katharina Grafinger, Wolfgang Weinmann
www.irm.unibe.ch

Comment1: monoisotopic mass
"CE(99.0)": CE spread 35 +/- 15 eV