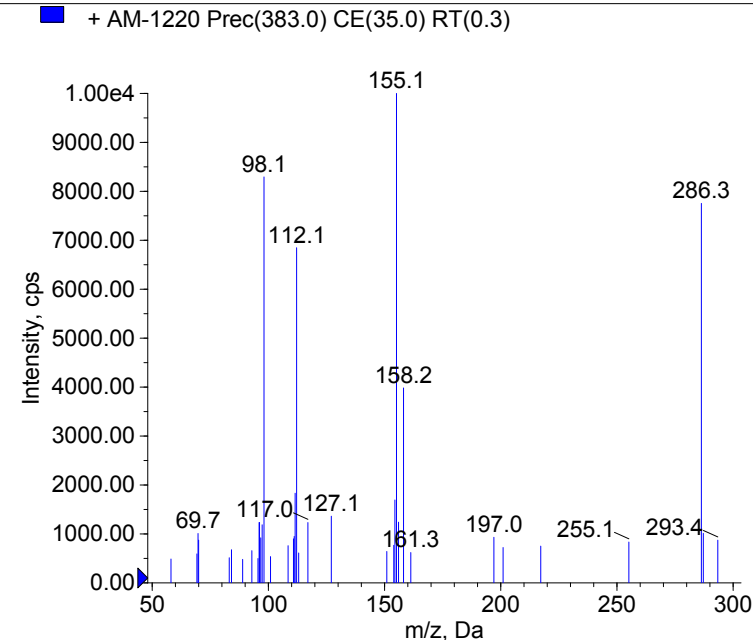
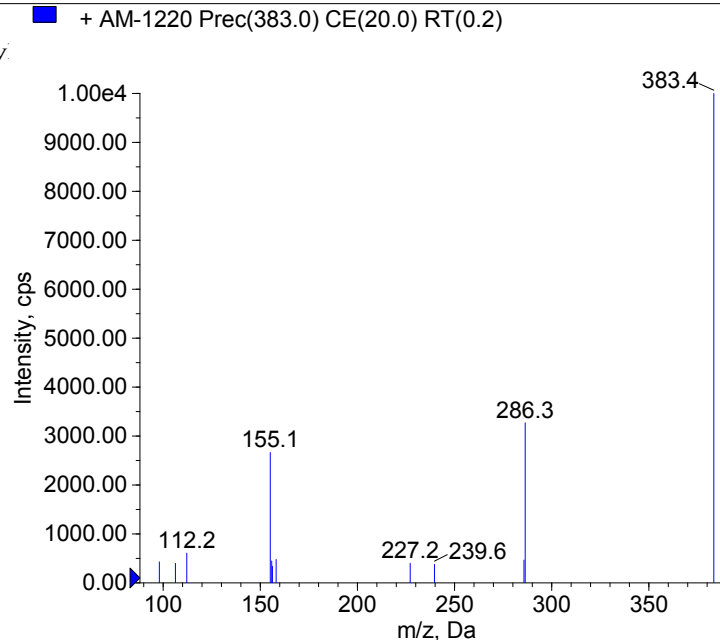
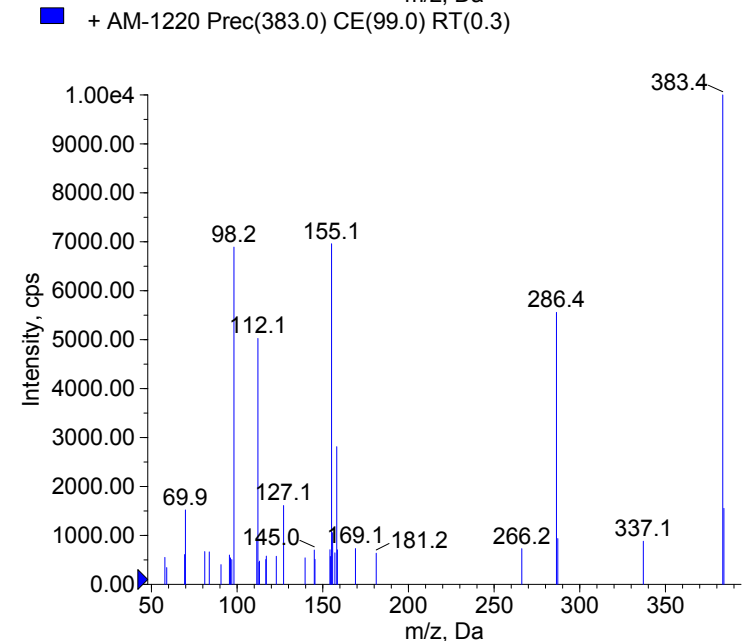
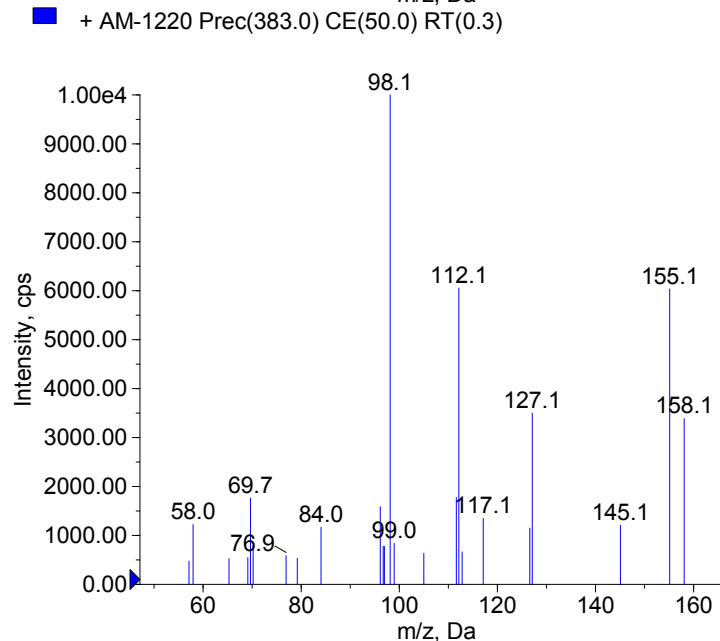


Compound Name: AM-1220  
 Synonyms: [1-[(1-methylpiperidin-2-yl)methy  
 Formula: C<sub>26</sub>H<sub>26</sub>N<sub>2</sub>O  
 CAS Number: 137642-54-7  
 Molecular weight(Da): 382.2045  
 Compound Class: Synthetic Cannabinoids  
 Compound ID:  
 User Value: 0.0000  
 Keyword:  
 Internal Standard: No  
 Comment1: 382.204513



Instrument Model: 4000 Q TRAP  
 Ion Source: Turbo Spray  
 Polarity: Positive  
 Scan Type: EPI  
 1st Precursor m/z: 383.0000  
 Collision Energy1(V): 20.0000  
 Charge State1: 1  
 CAD Gas Type:  
 CAD Gas Value: 6.0000  
 Retention Time(min): 0.20  
 Resolution: unit  
 Comment2:  
 Comment3:



© 2012-2015 University of Bern  
 Lars Ambach, Wolfgang Weinmann  
 www.irm.unibe.ch

Comment1: monoisotopic mass  
 "CE(99.0)": CE spread 35 +/- 15 eV

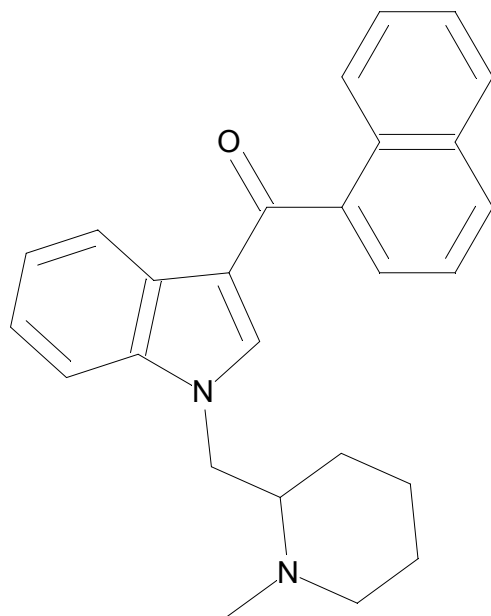
C26H26N2O

Chemist Name:

Project Name:

Workbook Name:

Workbook Page:



© 2012-2015 University of Bern  
Lars Ambach, Wolfgang Weinmann  
[www.irm.unibe.ch](http://www.irm.unibe.ch)

Comment1: monoisotopic mass  
"CE(99.0)": CE spread 35 +/- 15 eV