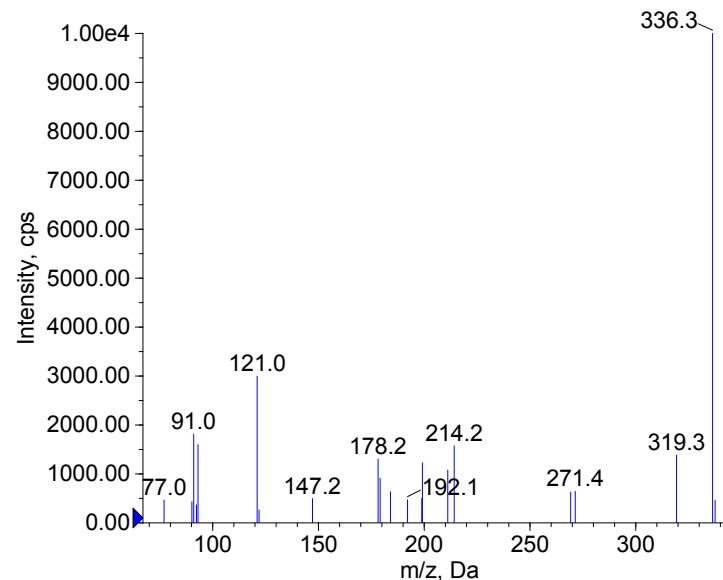


Compound Name: 25C-NBOMe  
 Synonyms: NBOMe-2C-C  
 Formula: C18H22ClNO3  
 CAS Number: 1227608-02-7  
 Molecular weight(Da): 335.1288  
 Compound Class: 2C Family  
 Compound ID:  
 User Value: 0.0000  
 Keyword:  
 Internal Standard: No  
 Comment1: 335.128821

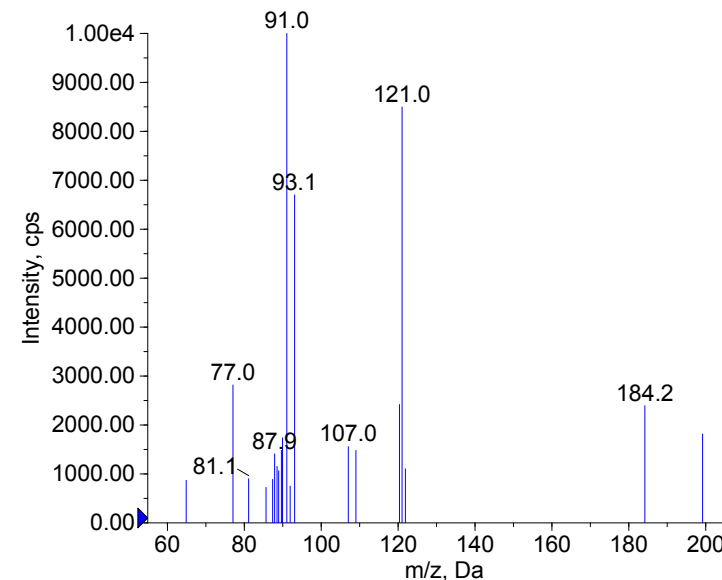
Instrument Model: 4000 Q TRAP  
 Ion Source: Turbo Spray  
 Polarity: Positive  
 Scan Type: EPI  
 1st Precursor m/z: 336.0000  
 Collision Energy1(V): 20.0000  
 Charge State1: 1  
 CAD Gas Type:  
 CAD Gas Value: 6.0000  
 Retention Time(min): 0.20  
 Resolution: unit  
 Comment2:  
 Comment3:

© 2012-2015 University of Bern  
 Lars Ambach, Wolfgang Weinmann  
 www.irm.unibe.ch

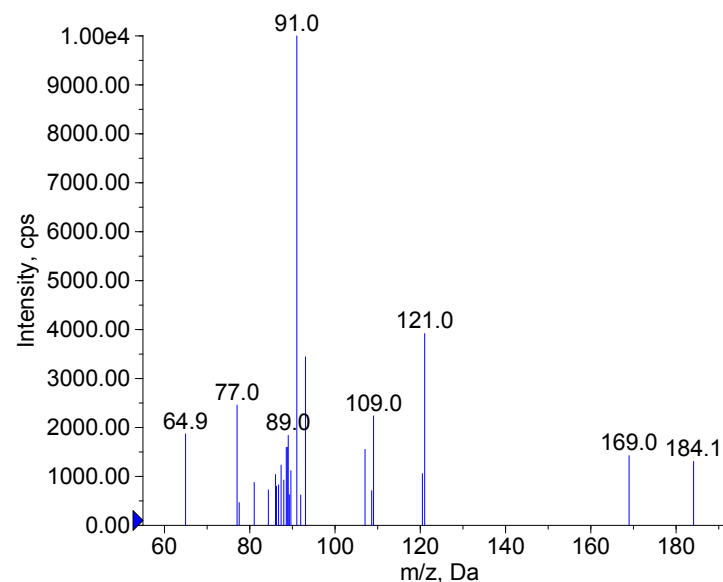
■ + 25C-NBOMe Prec(336.0) CE(20.0) RT(0.2)



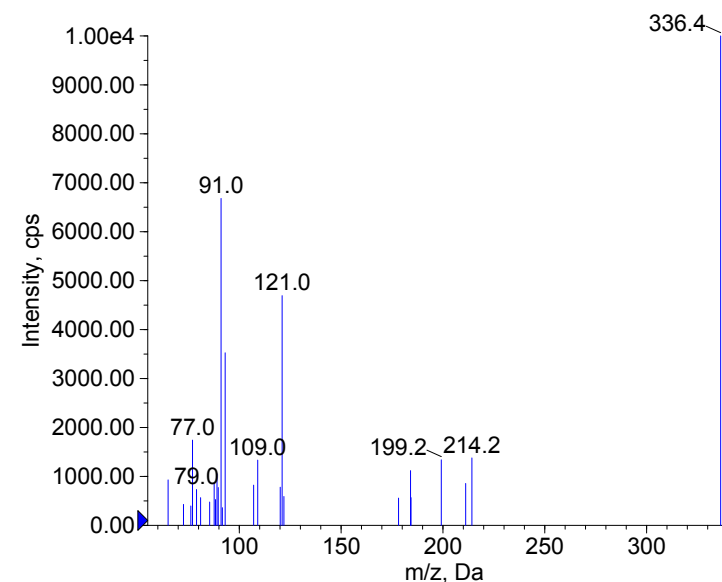
■ + 25C-NBOMe Prec(336.0) CE(35.0) RT(0.2)



■ + 25C-NBOMe Prec(336.0) CE(50.0) RT(0.2)



■ + 25C-NBOMe Prec(336.0) CE(99.0) RT(0.3)



Comment1: monoisotopic mass  
 "CE(99.0)": CE spread 35 +/- 15 eV

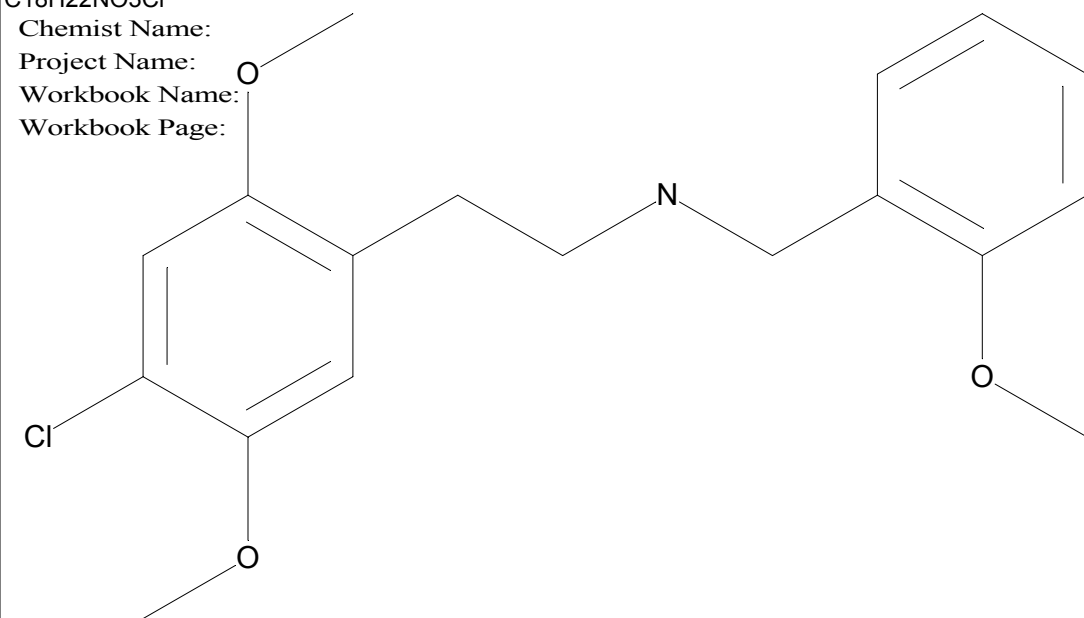
C18H22NO3Cl

Chemist Name:

Project Name:

Workbook Name:

Workbook Page:



© 2012-2015 University of Bern  
Lars Ambach, Wolfgang Weinmann  
[www.irm.unibe.ch](http://www.irm.unibe.ch)

Comment1: monoisotopic mass  
"CE(99.0)": CE spread 35 +/- 15 eV