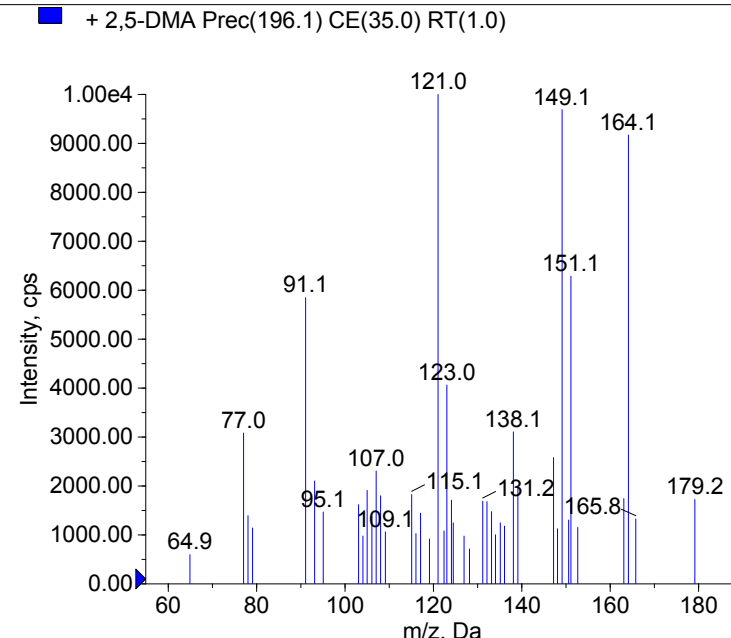
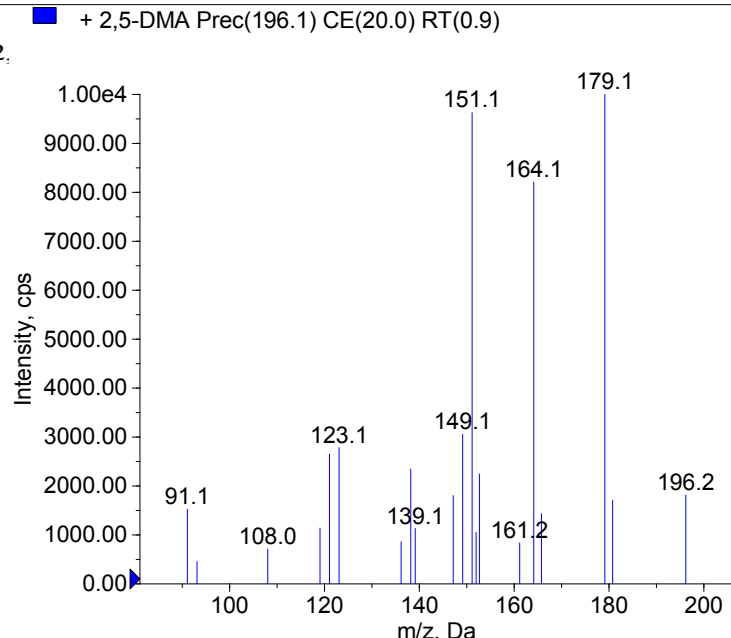
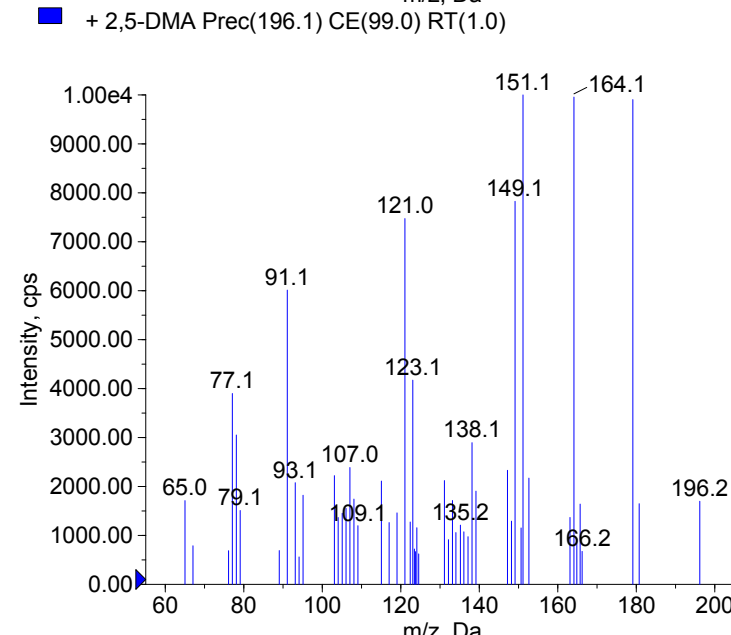
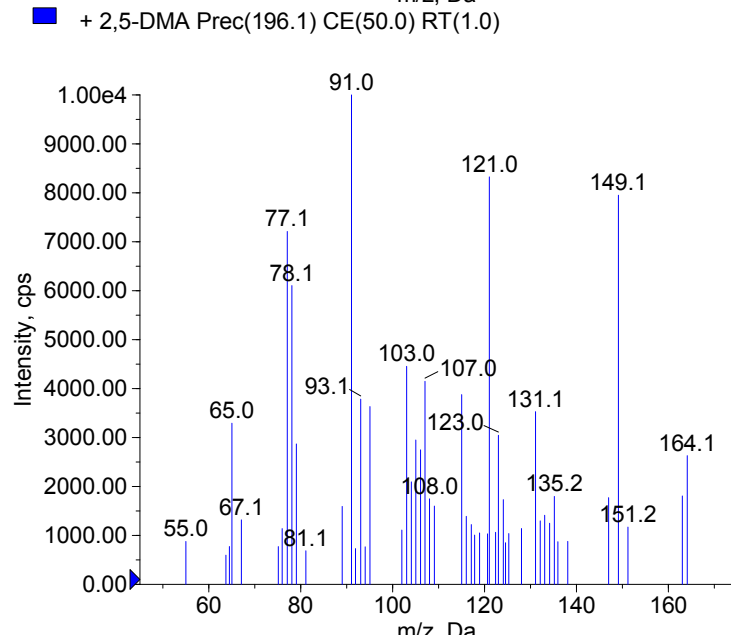


Compound Name: 2,5-DMA
 Synonyms: 2,5-dimethoxy-amphetamine; 1-(2,5-dimethoxyphenyl)ethan-1-amine
 Formula: C₁₁H₁₇NO₂
 CAS Number: 2801-68-5
 Molecular weight(Da): 195.1259
 Compound Class: Amphetamines
 Compound ID:
 User Value: 0.0000
 Keyword:
 Internal Standard: No
 Comment1: 195.125929



Instrument Model: 3200 Q TRAP
 Ion Source: Turbo Spray
 Polarity: Positive
 Scan Type: EPI
 1st Precursor m/z: 196.1000
 Collision Energy1(V): 20.0000
 Charge State1: 1
 CAD Gas Type: N₂
 CAD Gas Value: Level 4
 Retention Time(min): 0.90
 Resolution: unit
 Comment2:
 Comment3:



© 2012-2015 University of Bern
 Lars Ambach, Wolfgang Weinmann
 www.irm.unibe.ch

Comment1: monoisotopic mass
 "CE(99.0)": CE spread 35 +/- 15 eV

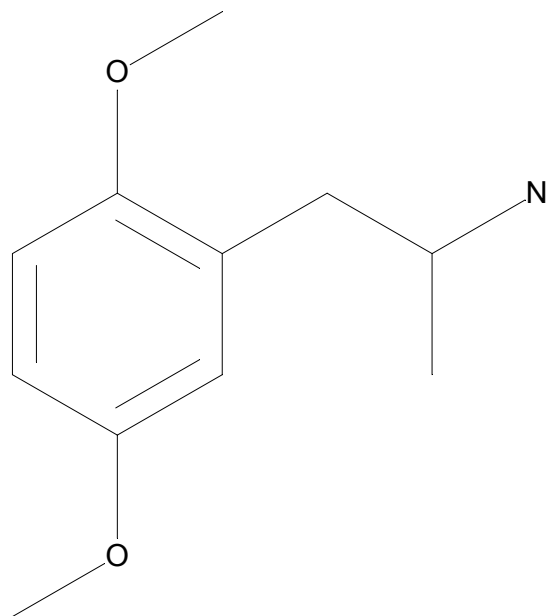
C11H17NO2

Chemist Name:

Project Name:

Workbook Name:

Workbook Page:



© 2012-2015 University of Bern
Lars Ambach, Wolfgang Weinmann
www.irm.unibe.ch

Comment1: monoisotopic mass
"CE(99.0)": CE spread 35 +/- 15 eV