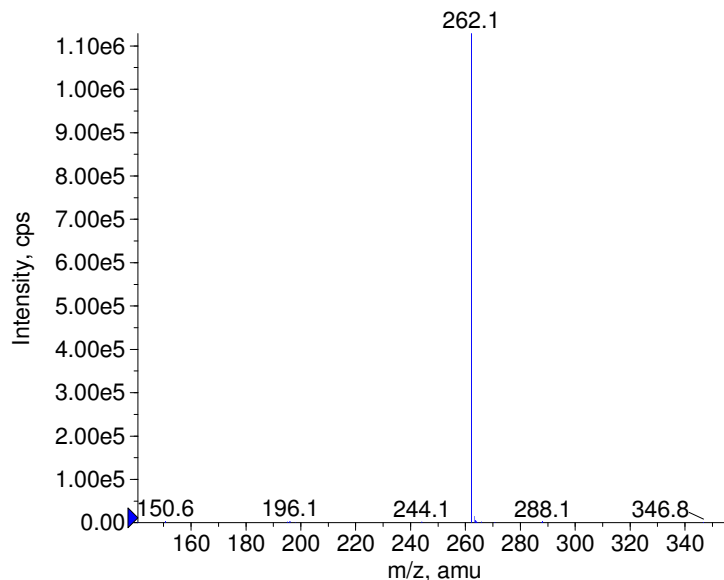
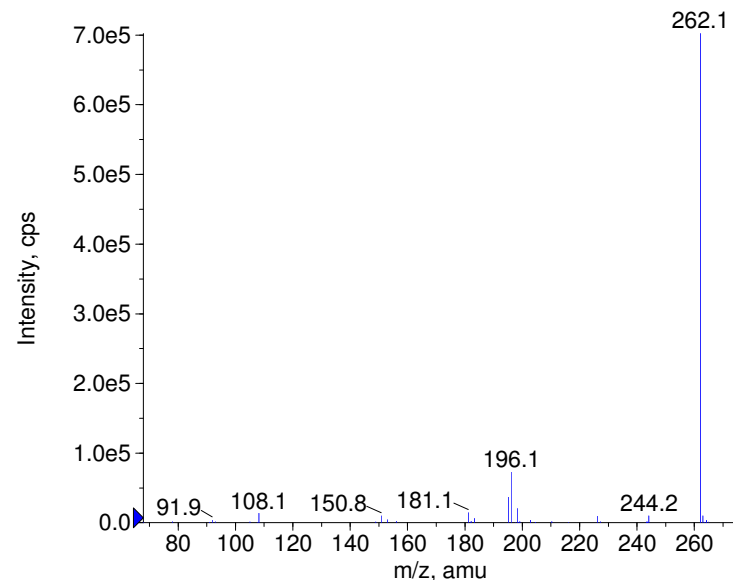


Compound Name: Torasemide  
 Synonyms:  
 Formula: C16H20N4O3S  
 CAS Number: 56211-40-6  
 Molecular weight(amu): 348.1256  
 Compound Class: diuretic, antihypertensive  
 Compound ID: T132  
 User Value: 0.0000  
 Keyword:  
 Internal Standard: No  
 Comment1:

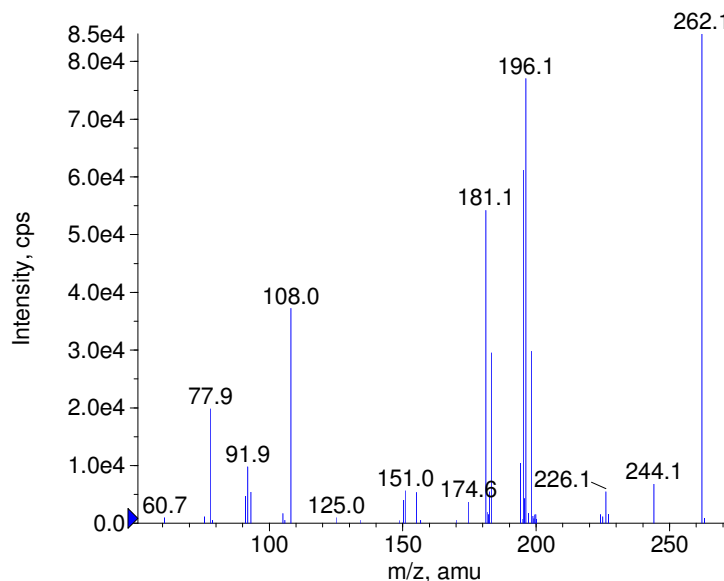
■ - Torasemide Prec(347.0) CE(-20.0) RT(0.8)



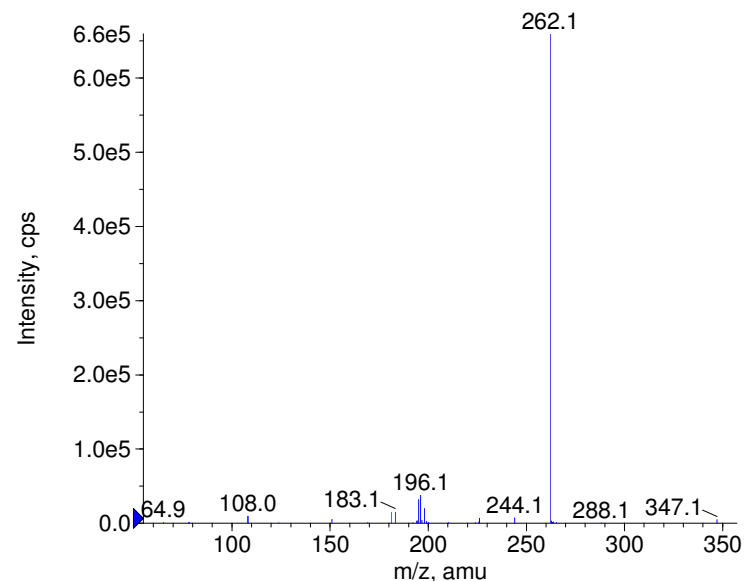
■ - Torasemide Prec(347.0) CE(-35.0) RT(0.8)



■ - Torasemide Prec(347.0) CE(-50.0) RT(0.8)

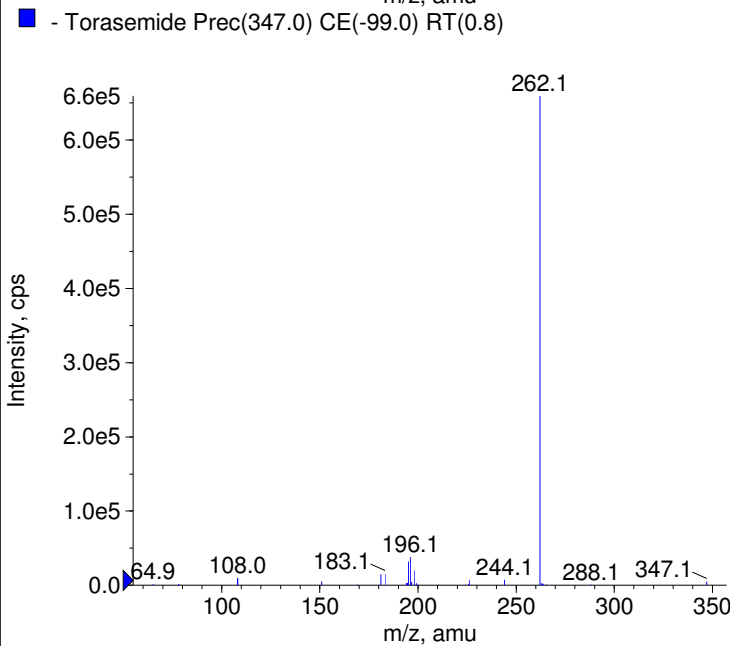
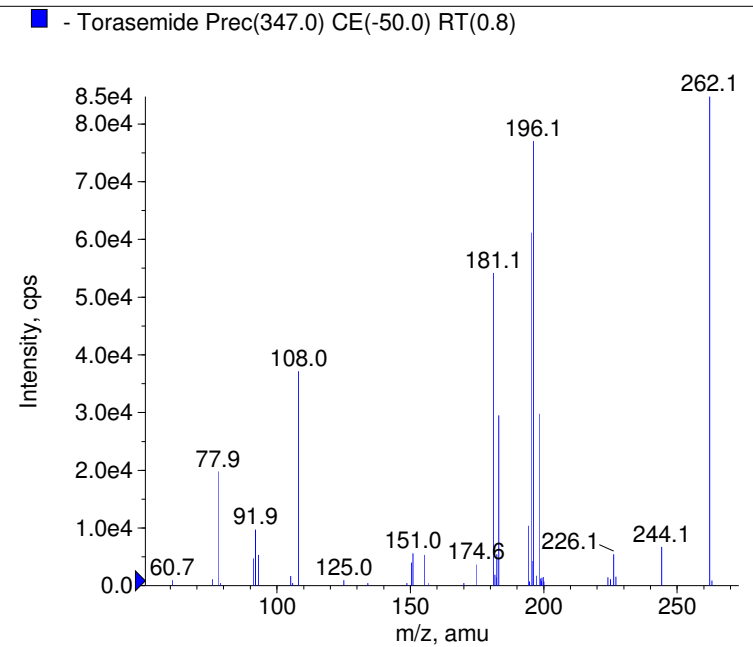
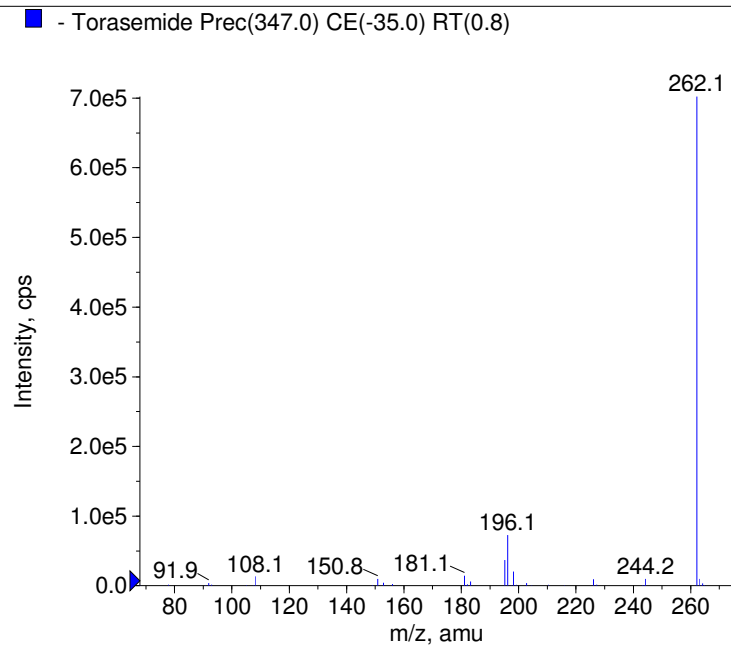
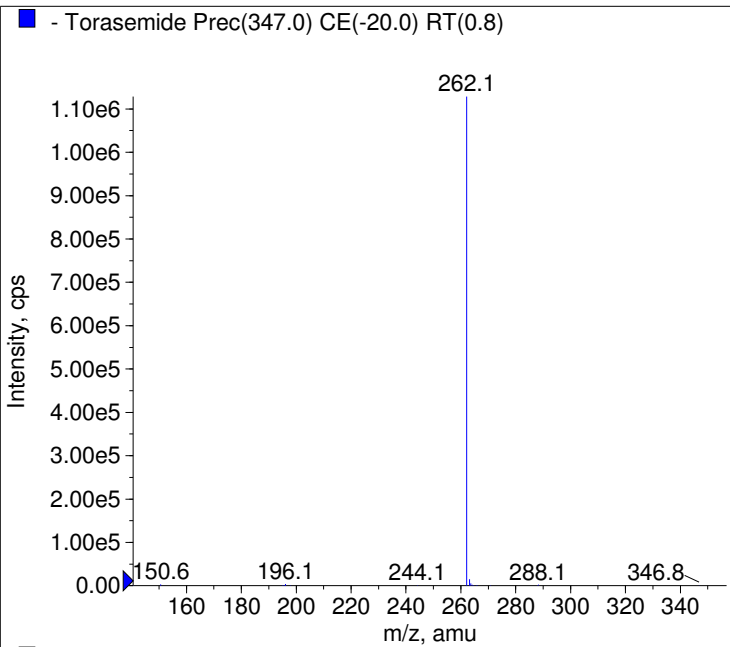


■ - Torasemide Prec(347.0) CE(-99.0) RT(0.8)



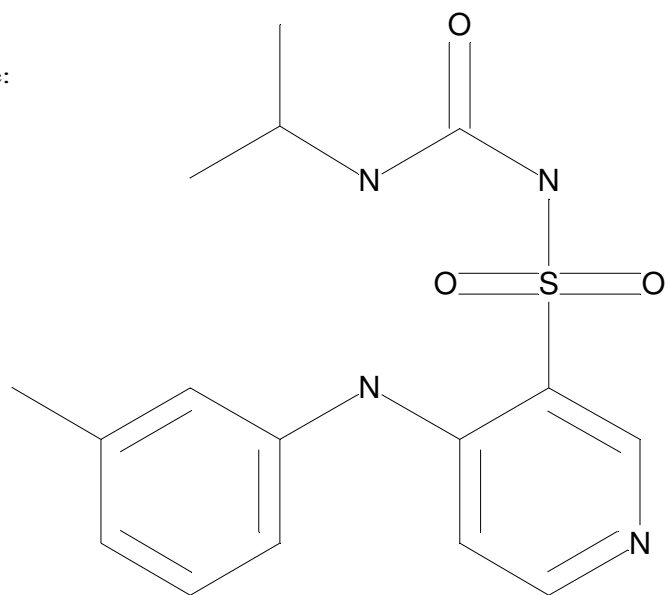
© Copyright 2007 by  
 W. Weinmann  
 S. Dresen  
[www.chemicalsoft.de](http://www.chemicalsoft.de)

“CE (99.0)”: CE spread 35+/-15 eV



C16H20N4O3S

Chemist Name:  
Project Name:  
Workbook Name:  
Workbook Page:



© Copyright 2007 by  
W. Weinmann  
S. Dresen  
[www.chemicalsoft.de](http://www.chemicalsoft.de)

“CE (99.0)“: CE spread 35+/-15 eV