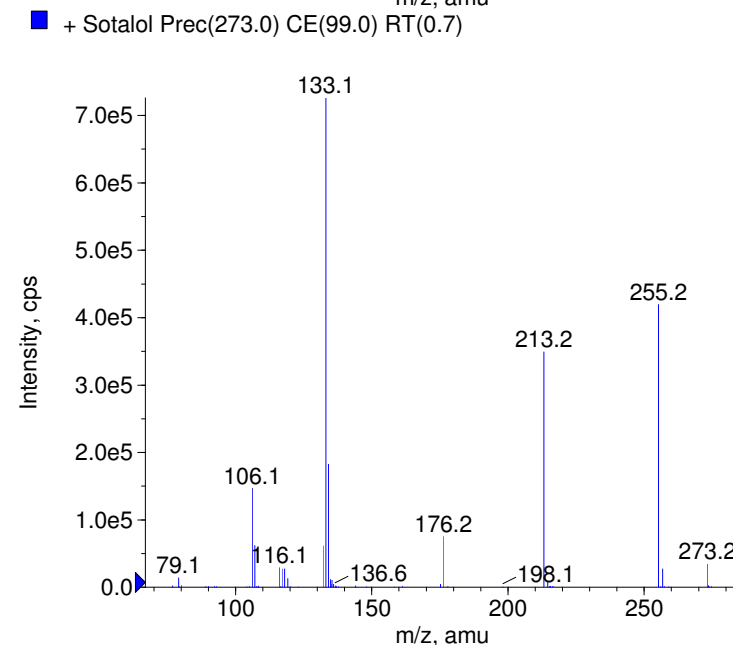
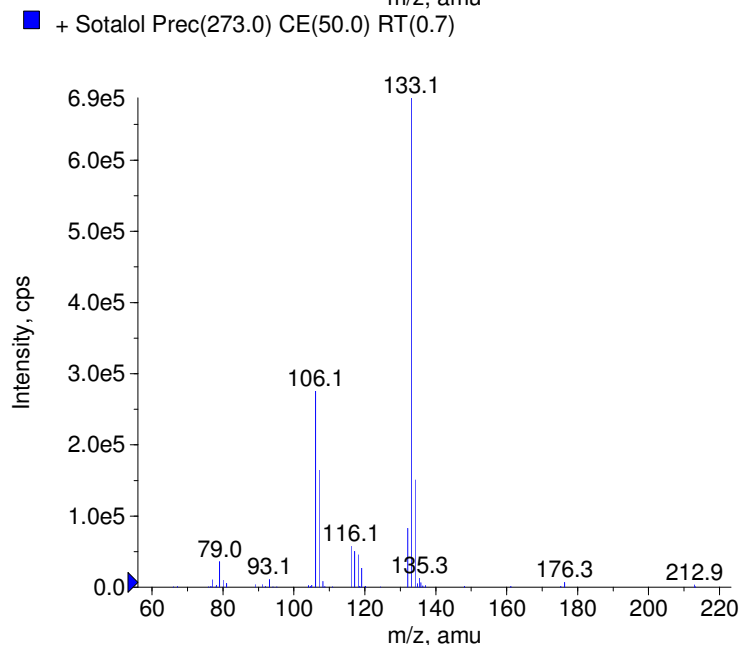
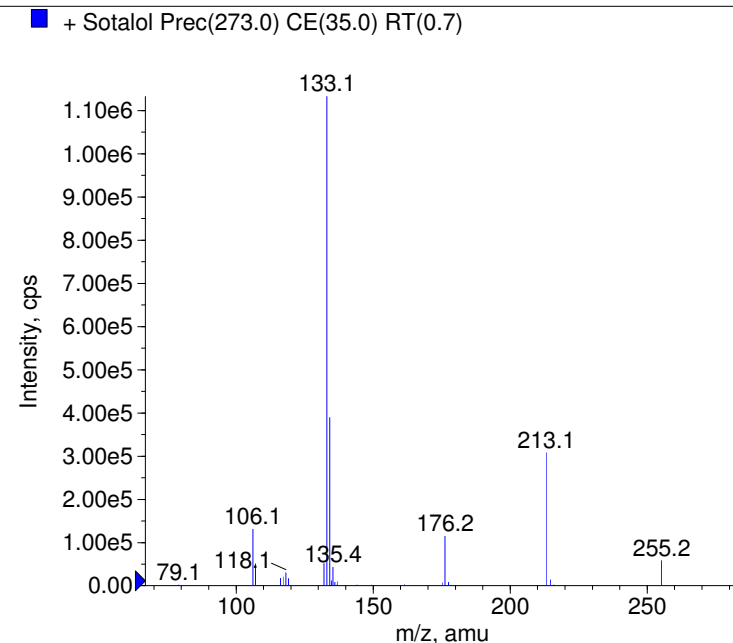
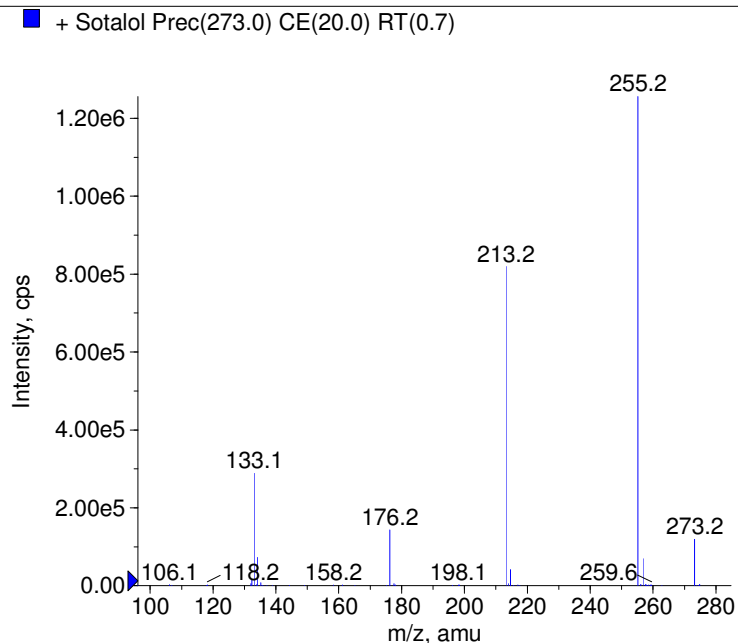


Compound Name: Sotalol
Synonyms:
Formula: C₁₂H₂₀N₂O₃S
CAS Number: 959-24-0
Molecular weight(amu): 272.1194
Compound Class: beta-blocker
Compound ID: S023
User Value: 0.0000
Keyword:
Internal Standard: No
Comment1:

Instrument Model: QTrap
Ion Source: Turbo Spray
Polarity: Positive
Scan Type: EPI
1st Precursor m/z: 273.0000
Collision Energy1(V): 20.0000
Charge State1: 1
CAD Gas Type:
CAD Gas Value: Level 4
Retention Time(min): 0.66
Resolution:
Comment2: unit
Comment3:

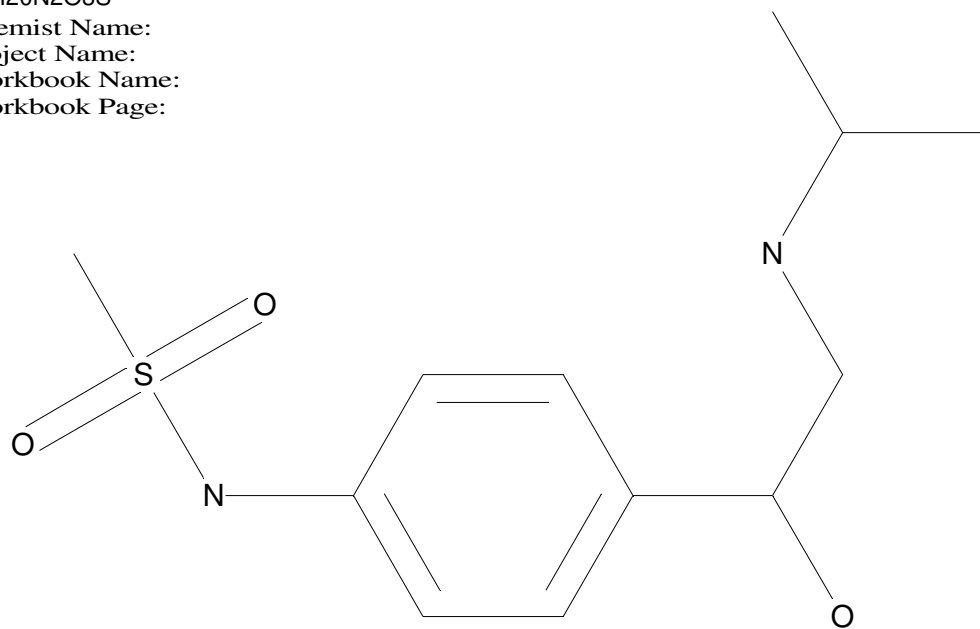
© Copyright 2007 by
W. Weinmann
S. Dresen
www.chemicalsoft.de

“CE (99.0)“: CE spread 35+/-15 eV



C12H20N2O3S

Chemist Name:
Project Name:
Workbook Name:
Workbook Page:



© Copyright 2007 by
W. Weinmann
S. Dresen
www.chemicalsoft.de

“CE (99.0)“: CE spread 35+/-15 eV