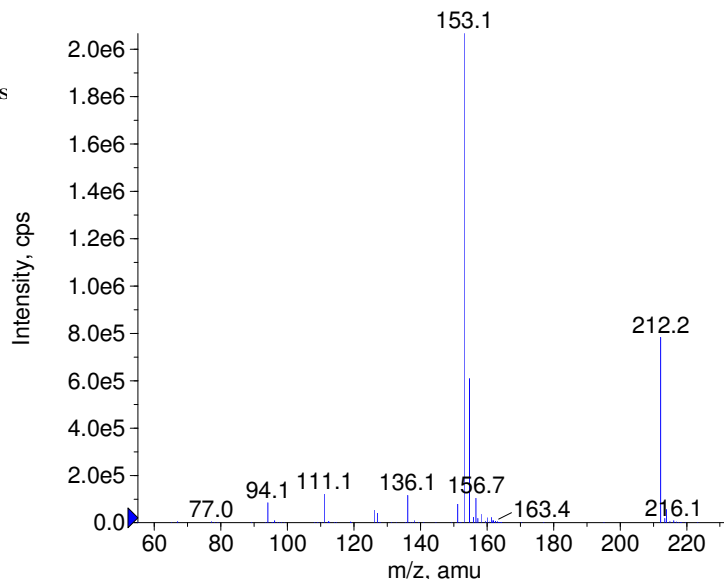
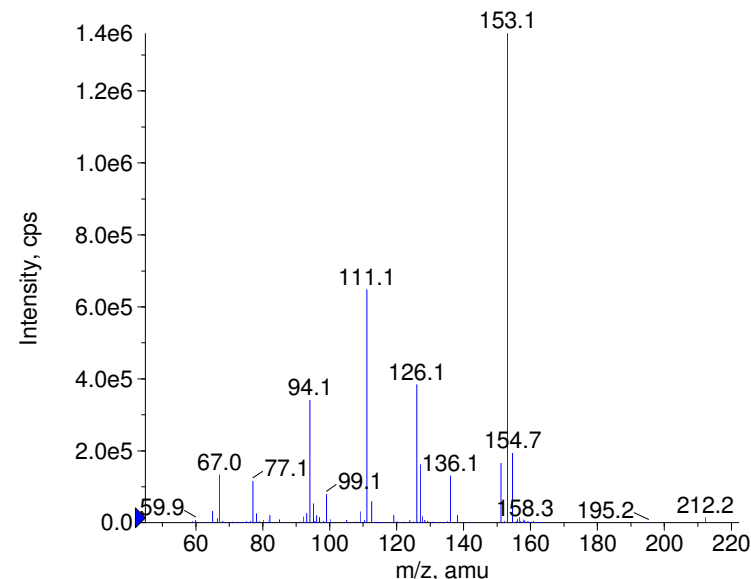


Compound Name: Pramipexole  
Synonyms:  
Formula: C10H17N3S  
CAS Number: 104632-26-0  
Molecular weight(amu): 211.1143  
Compound Class: antiparkinsonian, dopamine agonis  
Compound ID: P340  
User Value: 0.0000  
Keyword:  
Internal Standard: No  
Comment1:

+ Pramipexole Prec(212.0) CE(20.0) RT(0.8)

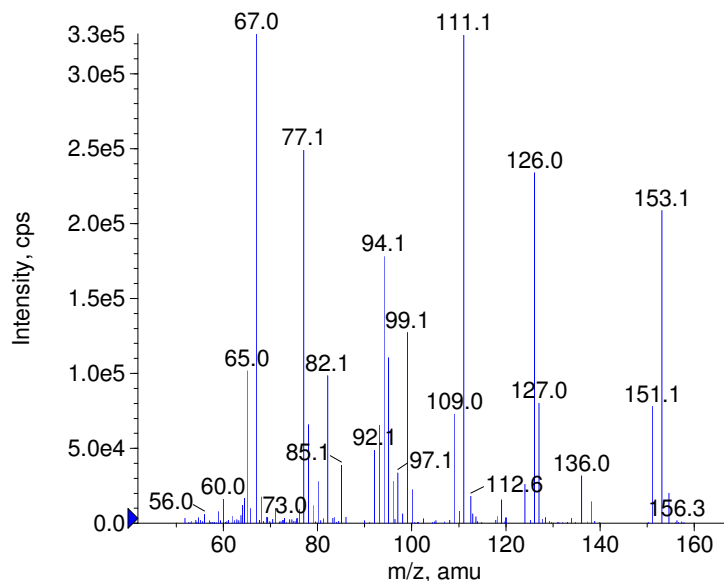


+ Pramipexole Prec(212.0) CE(35.0) RT(0.8)

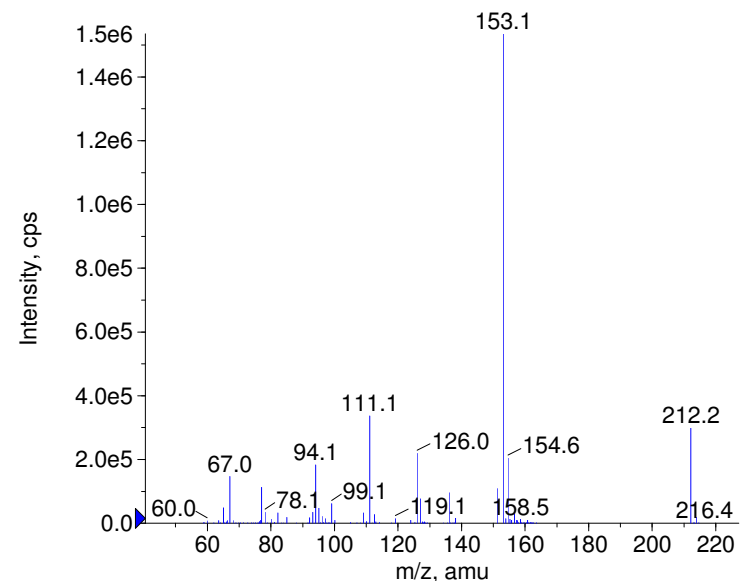


Instrument Model: QTrap  
Ion Source: Turbo Spray  
Polarity: Positive  
Scan Type: EPI  
1st Precursor m/z: 212.0000  
Collision Energy1(V): 20.0000  
Charge State1: 1  
CAD Gas Type:  
CAD Gas Value: Level 4  
Retention Time(min): 0.78  
Resolution: unit  
Comment2:  
Comment3:

+ Pramipexole Prec(212.0) CE(50.0) RT(0.8)



+ Pramipexole Prec(212.0) CE(99.0) RT(0.8)

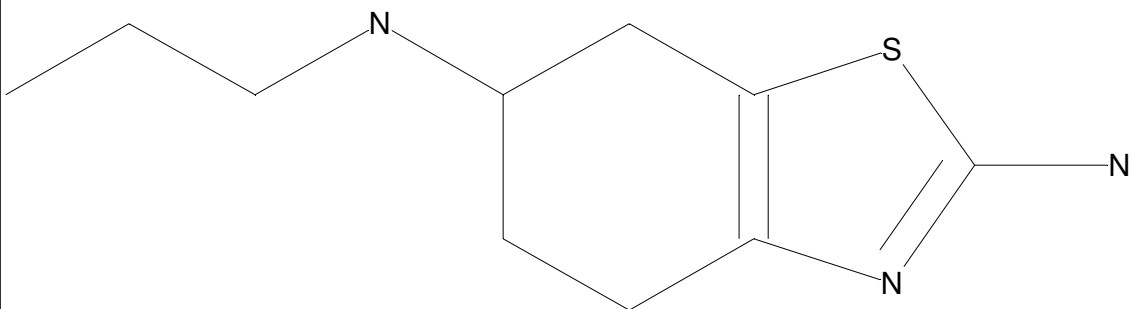


© Copyright 2007 by  
W. Weinmann  
S. Dresen  
[www.chemicalsoft.de](http://www.chemicalsoft.de)

“CE (99.0)”: CE spread 35+/-15 eV

C10H17N3S

Chemist Name:  
Project Name:  
Workbook Name:  
Workbook Page:



© Copyright 2007 by  
W. Weinmann  
S. Dresen  
[www.chemicalsoft.de](http://www.chemicalsoft.de)

“CE (99.0)“: CE spread 35+/-15 eV