

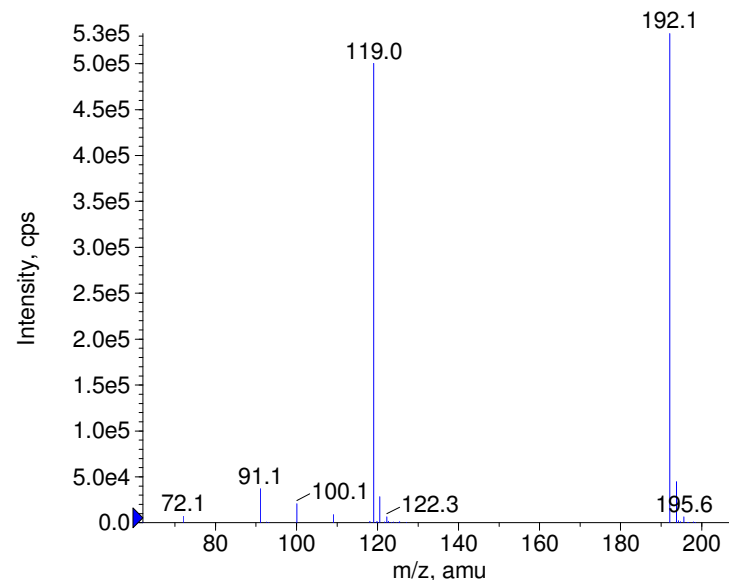
Compound Name: N,N-Diethyl-m-toluamide
 Synonyms:
 Formula: C12H17NO
 CAS Number: 134-62-3
 Molecular weight(amu): 191.1310
 Compound Class: repellent
 Compound ID: D208
 User Value: 0.0000
 Keyword:
 Internal Standard: No
 Comment1:

Instrument Model: QTrap
 Ion Source: Turbo Spray
 Polarity: Positive
 Scan Type: EPI
 1st Precursor m/z: 192.0000
 Collision Energy1(V): 20.0000
 Charge State1: 1
 CAD Gas Type:
 CAD Gas Value: Level 4
 Retention Time(min): 1.05
 Resolution:
 Comment2: unit
 Comment3:

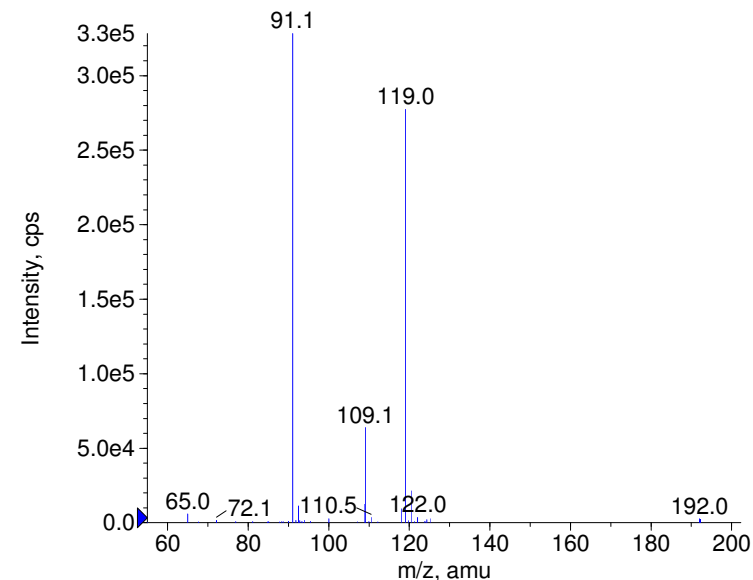
© Copyright 2007 by
 W. Weinmann
 S. Dresen
www.chemicalsoft.de

“CE (99.0)”: CE spread 35+/-15 eV

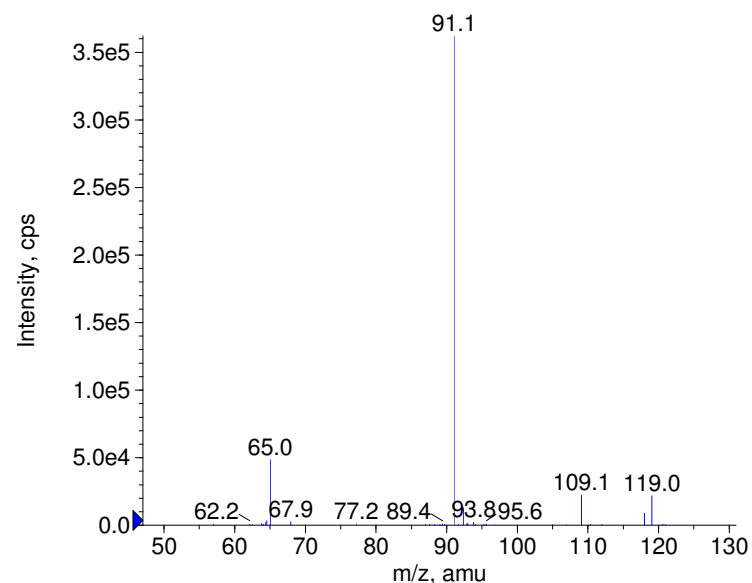
+ N,N-Diethyl-m-toluamide Prec(192.0) CE(20.0) RT(1.0)



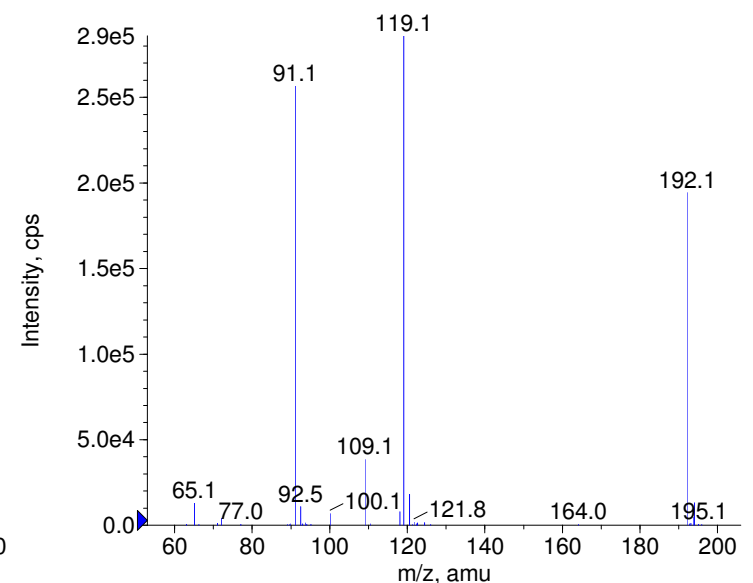
+ N,N-Diethyl-m-toluamide Prec(192.0) CE(35.0) RT(1.1)



+ N,N-Diethyl-m-toluamide Prec(192.0) CE(50.0) RT(1.1)

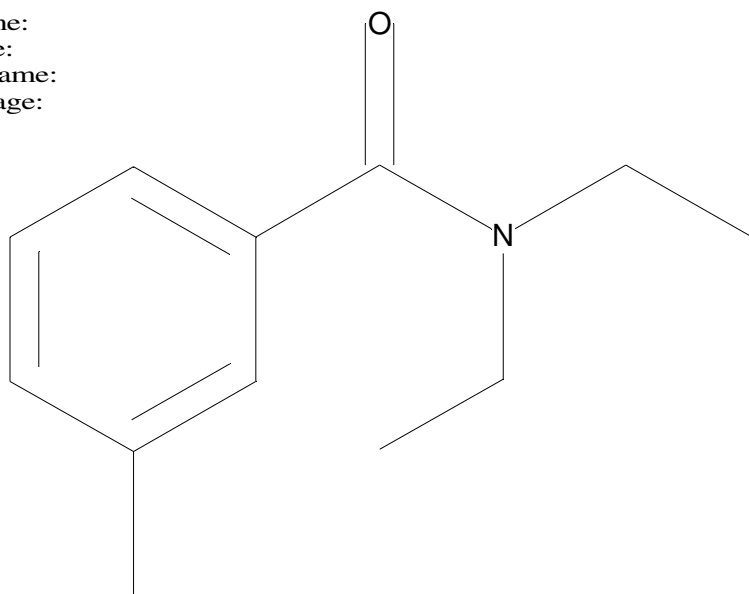


+ N,N-Diethyl-m-toluamide Prec(192.0) CE(99.0) RT(1.1)



C12H17NO

Chemist Name:
Project Name:
Workbook Name:
Workbook Page:



© Copyright 2007 by
W. Weinmann
S. Dresen
www.chemicalsoft.de

“CE (99.0)“: CE spread 35+/-15 eV