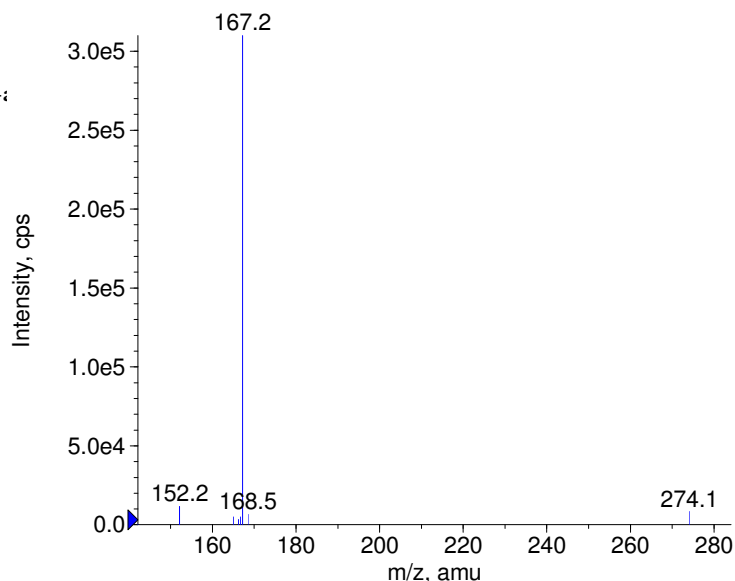
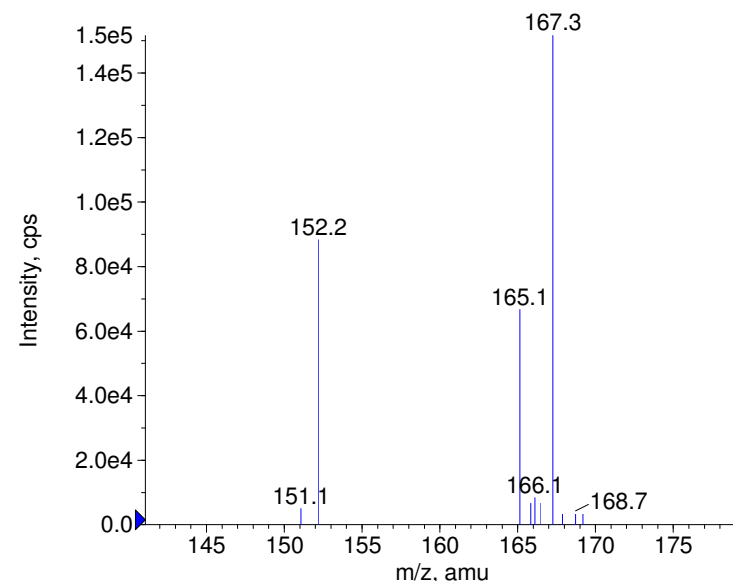


Compound Name: Modafinil
Synonyms:
Formula: C₁₅H₁₅NO₂S
CAS Number: 68693-11-8
Molecular weight(amu): 273.0822
Compound Class: CNS stimulant, adrenergic (alpha-:
Compound ID: M272
User Value: 0.0000
Keyword:
Internal Standard: No
Comment1:

+ Modafinil Prec(274.0) CE(20.0) RT(0.9)

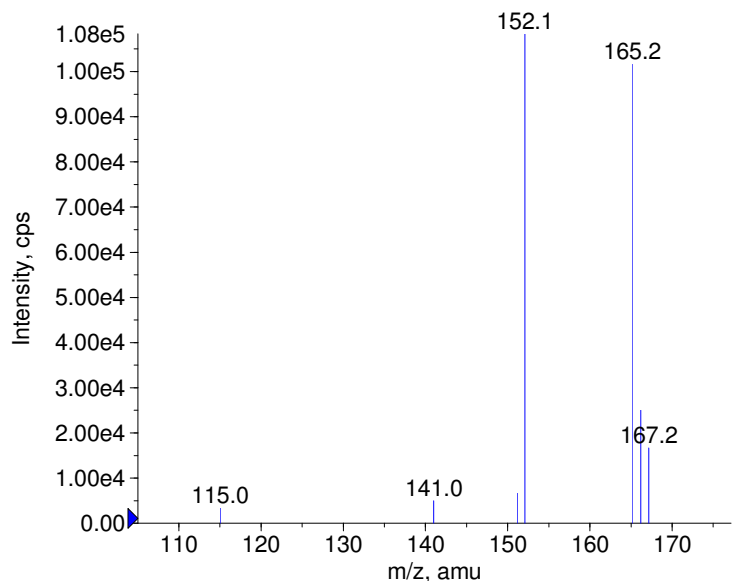


+ Modafinil Prec(274.0) CE(35.0) RT(0.9)

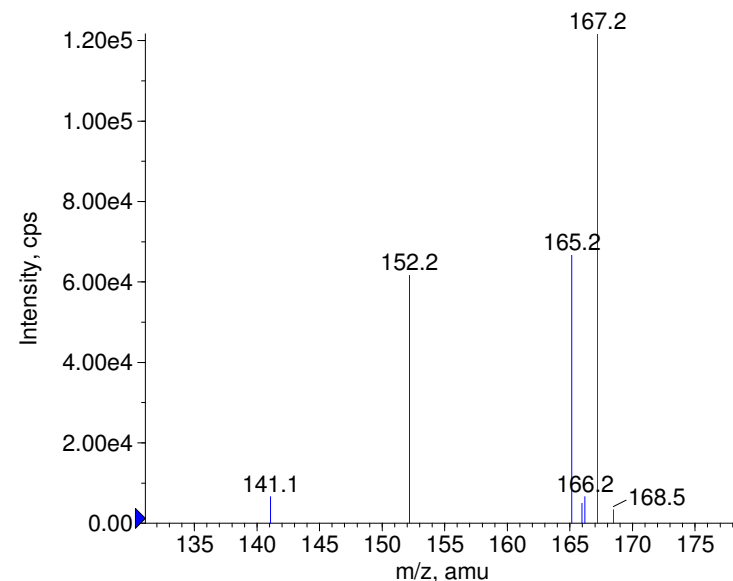


Instrument Model: QTrap
Ion Source: Turbo Spray
Polarity: Positive
Scan Type: EPI
1st Precursor m/z: 274.0000
Collision Energy1(V): 20.0000
Charge State1: 1
CAD Gas Type:
CAD Gas Value: Level 4
Retention Time(min): 0.94
Resolution: unit
Comment2:
Comment3:

+ Modafinil Prec(274.0) CE(50.0) RT(1.0)



+ Modafinil Prec(274.0) CE(99.0) RT(1.0)

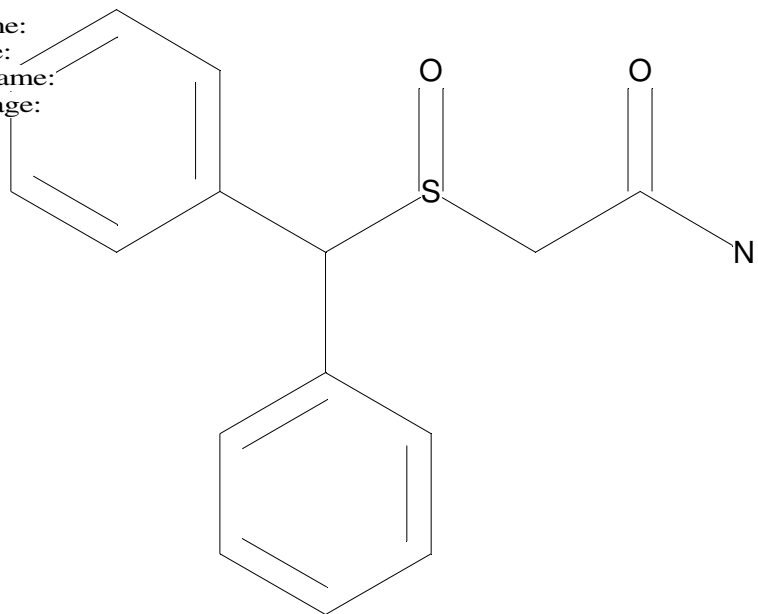


© Copyright 2007 by
W. Weinmann
S. Dresen
www.chemicalsoft.de

“CE (99.0)“: CE spread 35+/-15 eV

C15H15NO2S

Chemist Name:
Project Name:
Workbook Name:
Workbook Page:



© Copyright 2007 by
W. Weinmann
S. Dresen
www.chemicalsoft.de

“CE (99.0)“: CE spread 35+/-15 eV