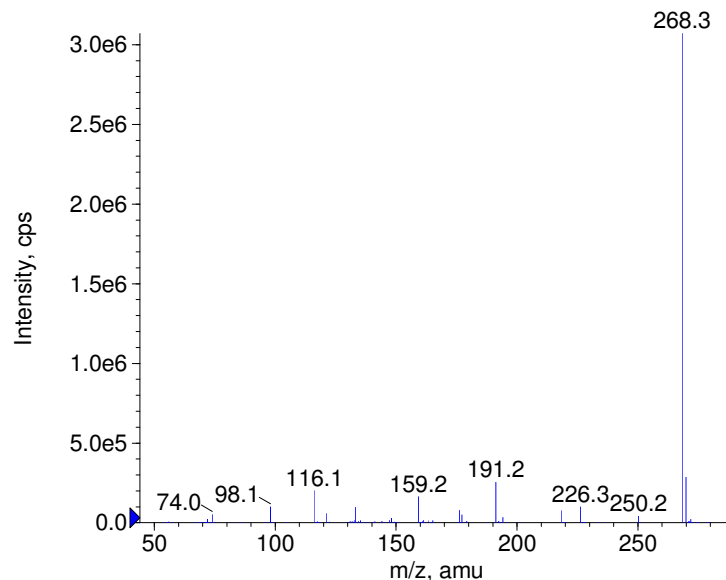
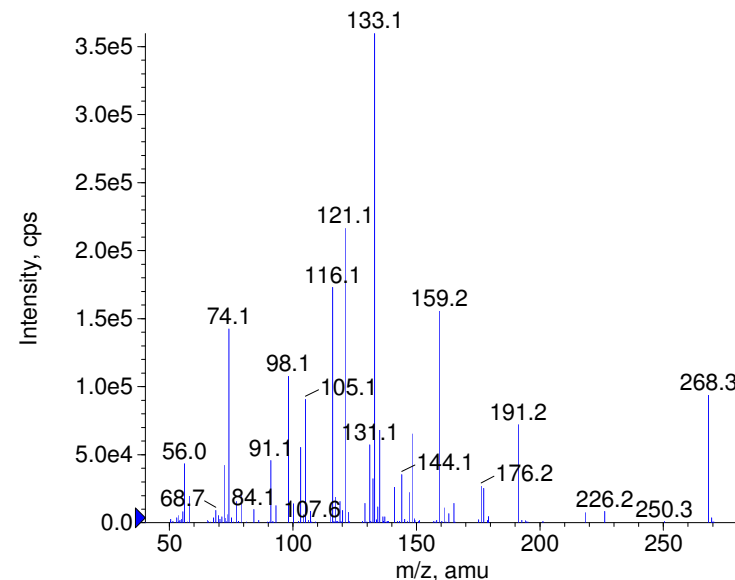


Compound Name: Metoprolol  
 Synonyms:  
 Formula: C15H25NO3  
 CAS Number: 37350-58-6  
 Molecular weight(amu): 267.1834  
 Compound Class: beta-blocker  
 Compound ID: M053  
 User Value: 0.0000  
 Keyword:  
 Internal Standard: No  
 Comment1:

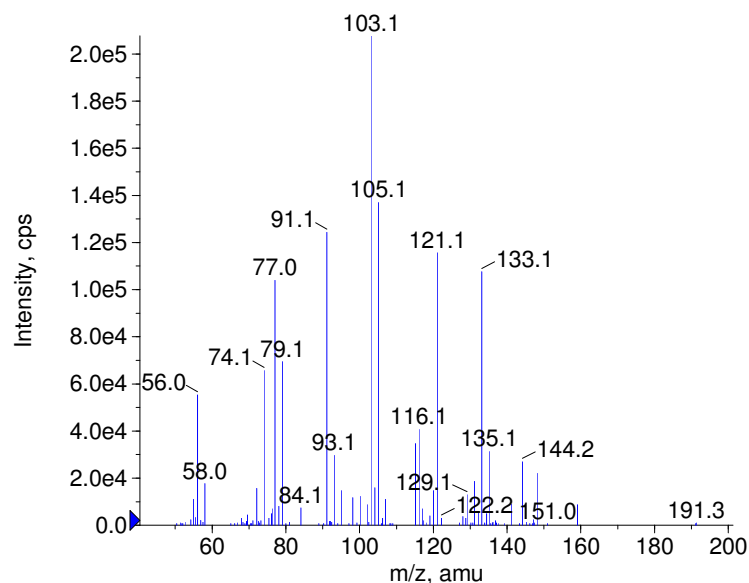
■ + Metoprolol Prec(268.0) CE(20.0) RT(0.7)



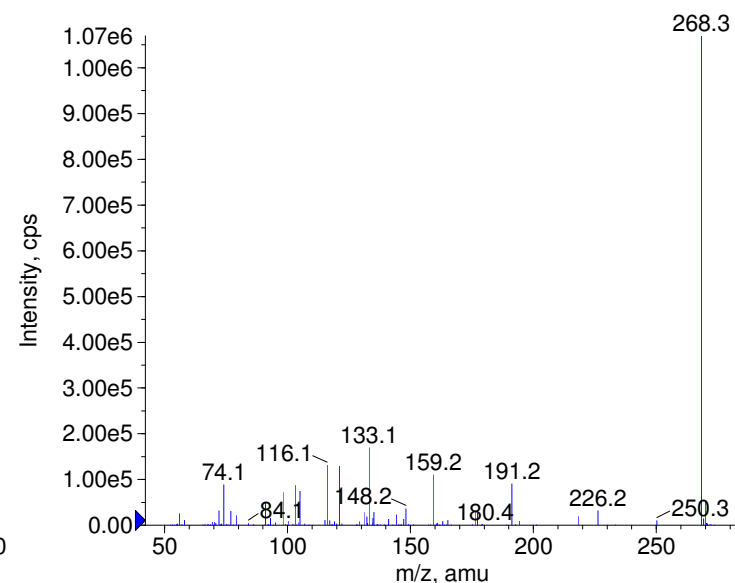
■ + Metoprolol Prec(268.0) CE(35.0) RT(0.7)



■ + Metoprolol Prec(268.0) CE(50.0) RT(0.8)



■ + Metoprolol Prec(268.0) CE(99.0) RT(0.8)

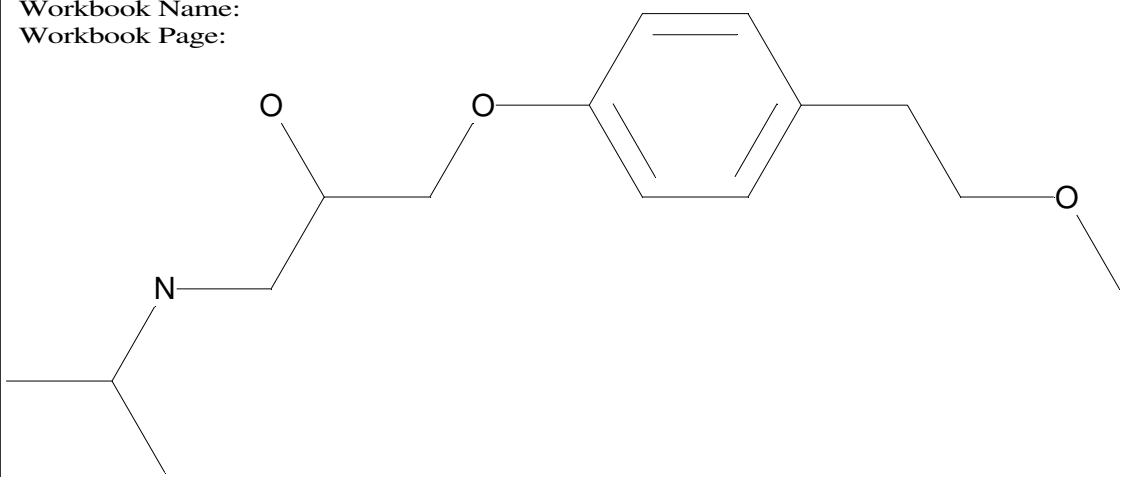


© Copyright 2007 by  
 W. Weinmann  
 S. Dresen  
[www.chemicalsoft.de](http://www.chemicalsoft.de)

“CE (99.0)”: CE spread 35+/-15 eV

C15H25NO3

Chemist Name:  
Project Name:  
Workbook Name:  
Workbook Page:



© Copyright 2007 by  
W. Weinmann  
S. Dresen  
[www.chemicalsoft.de](http://www.chemicalsoft.de)

“CE (99.0)“: CE spread 35+/-15 eV