

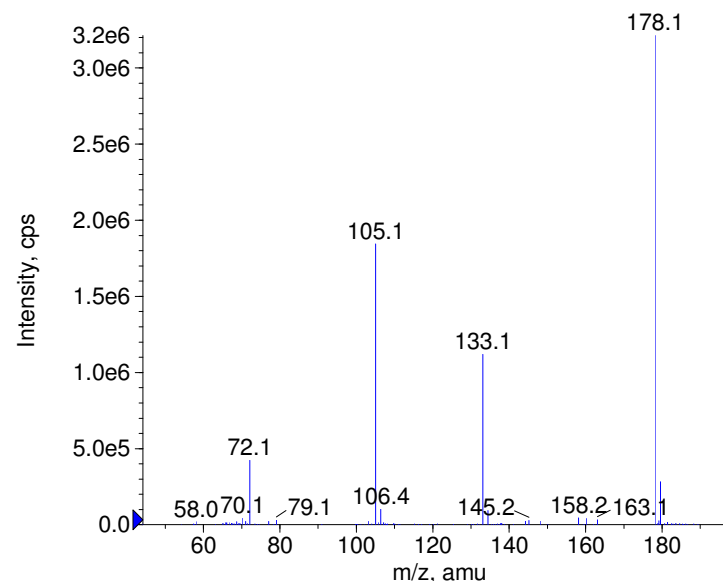
Compound Name: Metamfepramone  
 Synonyms:  
 Formula: C11H15NO  
 CAS Number: 15351-09-4  
 Molecular weight(amu): 177.1153  
 Compound Class: anorexic  
 Compound ID: M110  
 User Value: 0.0000  
 Keyword:  
 Internal Standard: No  
 Comment1:

Instrument Model: QTrap  
 Ion Source: Turbo Spray  
 Polarity: Positive  
 Scan Type: EPI  
 1st Precursor m/z: 178.0000  
 Collision Energy1(V): 20.0000  
 Charge State1: 1  
 CAD Gas Type:  
 CAD Gas Value: Level 4  
 Retention Time(min): 0.81  
 Resolution: unit  
 Comment2:  
 Comment3:

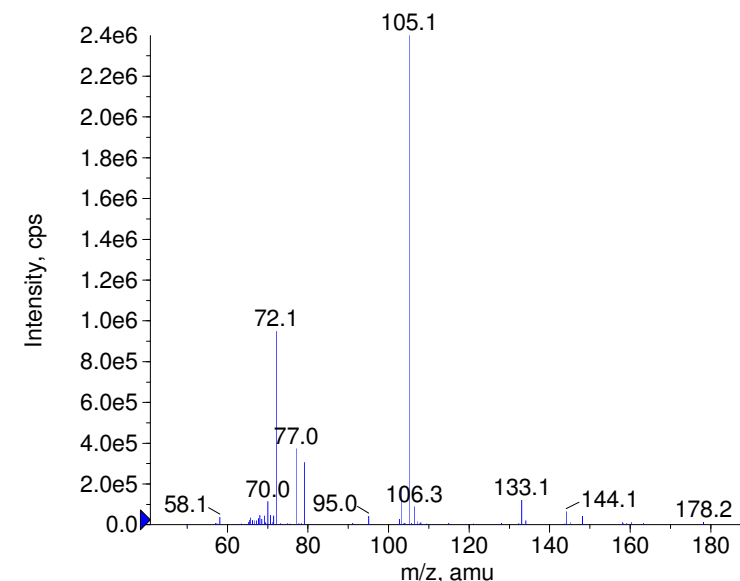
© Copyright 2007 by  
 W. Weinmann  
 S. Dresen  
[www.chemicalsoft.de](http://www.chemicalsoft.de)

“CE (99.0)”: CE spread 35+/-15 eV

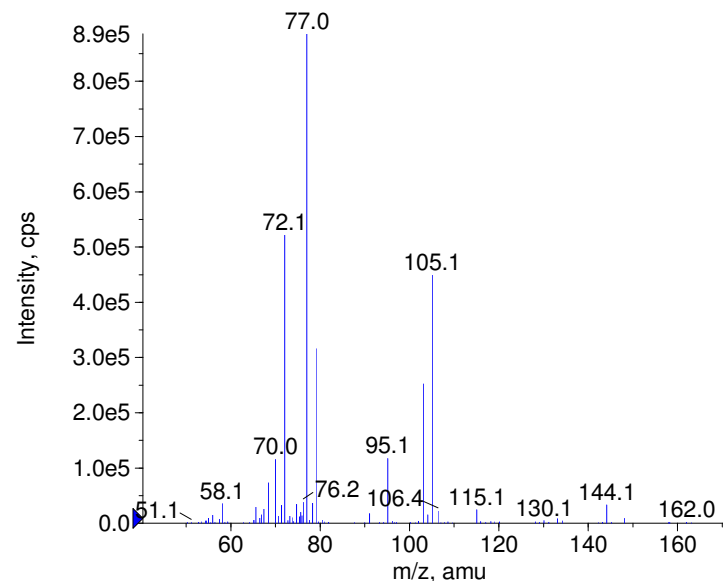
+ Metamfepramone Prec(178.0) CE(20.0) RT(0.8)



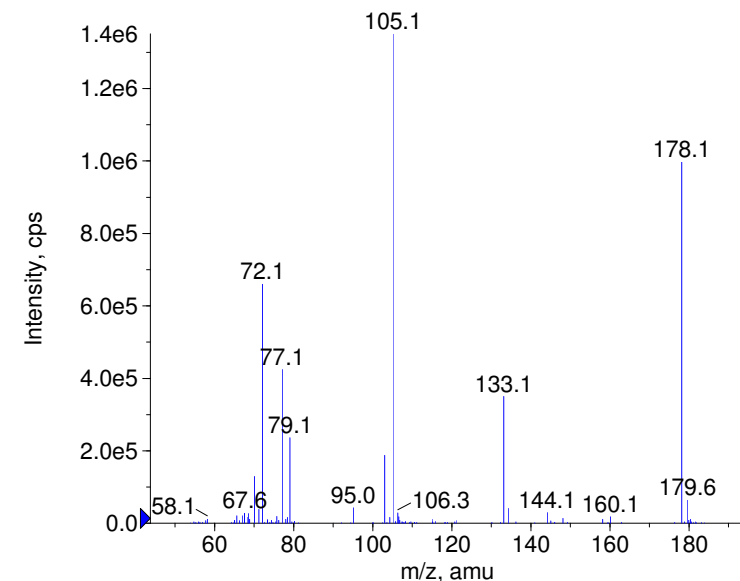
+ Metamfepramone Prec(178.0) CE(35.0) RT(0.8)



+ Metamfepramone Prec(178.0) CE(50.0) RT(0.8)

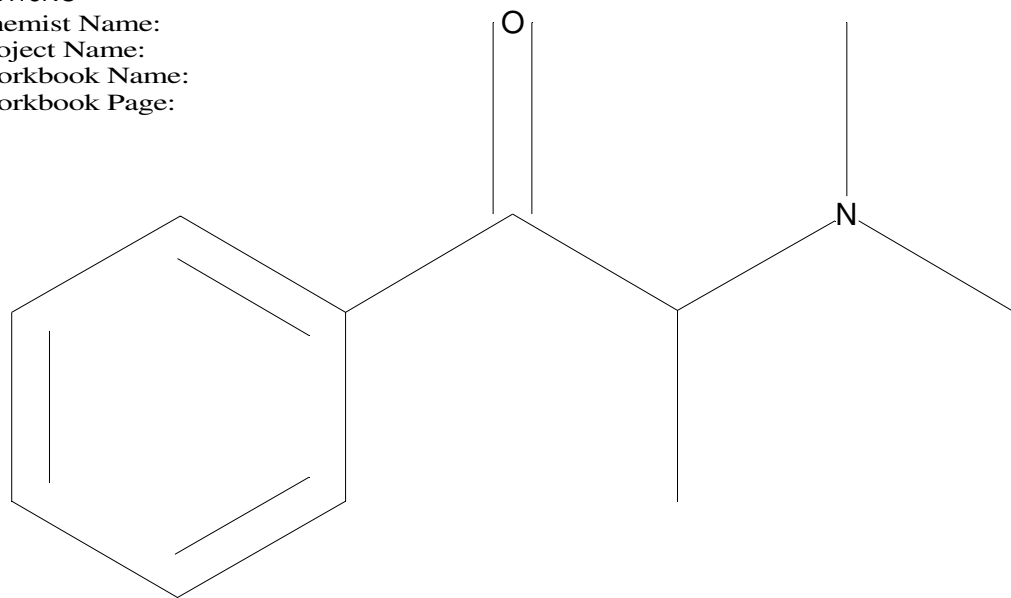


+ Metamfepramone Prec(178.0) CE(99.0) RT(0.8)



C11H15NO

Chemist Name:  
Project Name:  
Workbook Name:  
Workbook Page:



© Copyright 2007 by  
W. Weinmann  
S. Dresen  
[www.chemicalsoft.de](http://www.chemicalsoft.de)

“CE (99.0)“: CE spread 35+/-15 eV