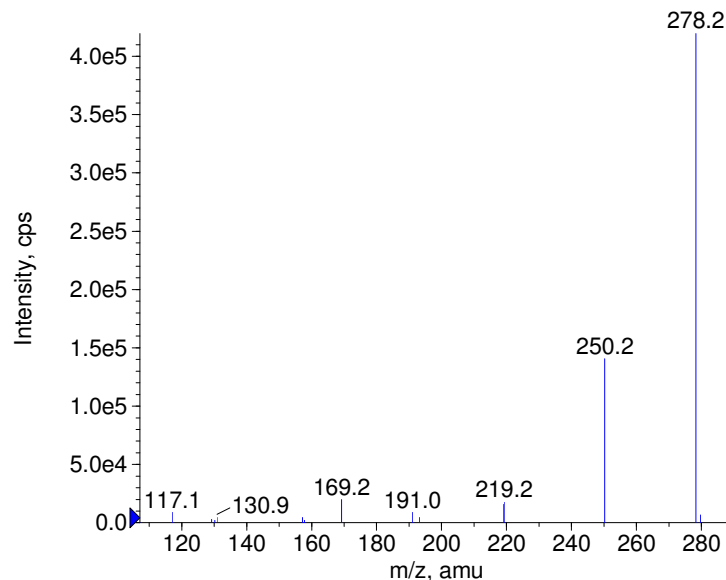
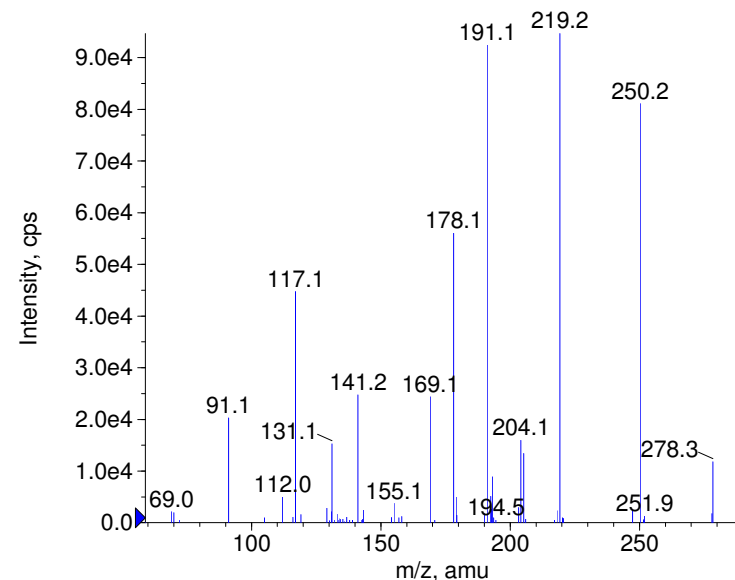


Compound Name: Maprotiline
 Synonyms:
 Formula: C20H23N
 CAS Number: 10262-69-8
 Molecular weight(amu): 277.1830
 Compound Class: antidepressant
 Compound ID: M044
 User Value: 0.0000
 Keyword:
 Internal Standard: No
 Comment1:

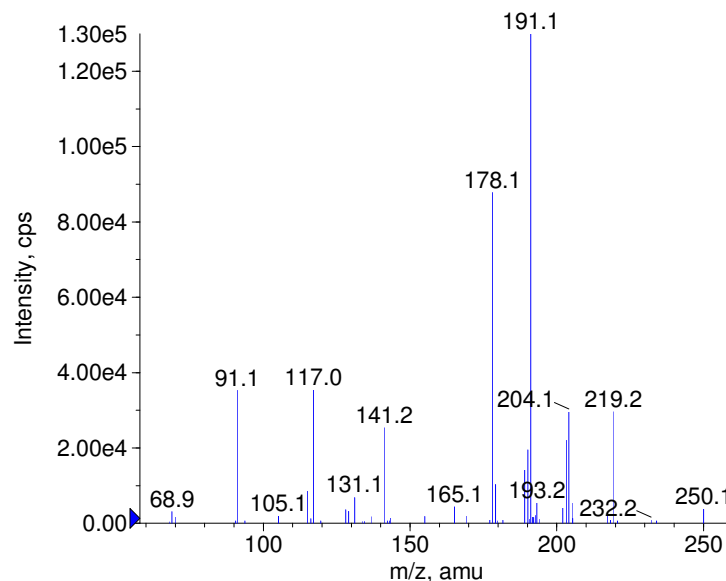
■ + Maprotiline Prec(278.0) CE(20.0) RT(1.0)



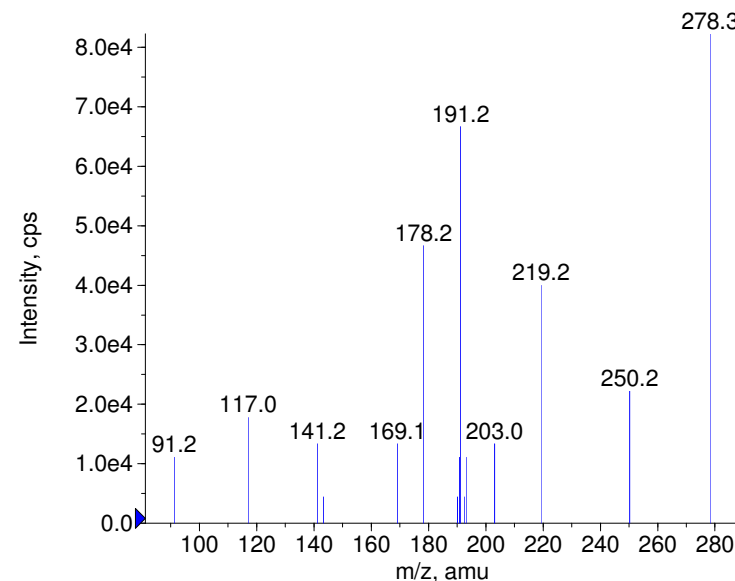
■ + Maprotiline Prec(278.0) CE(35.0) RT(1.0)



■ + Maprotiline Prec(278.0) CE(50.0) RT(1.0)



■ + Maprotiline Prec(278.0) CE(99.0) RT(1.0)



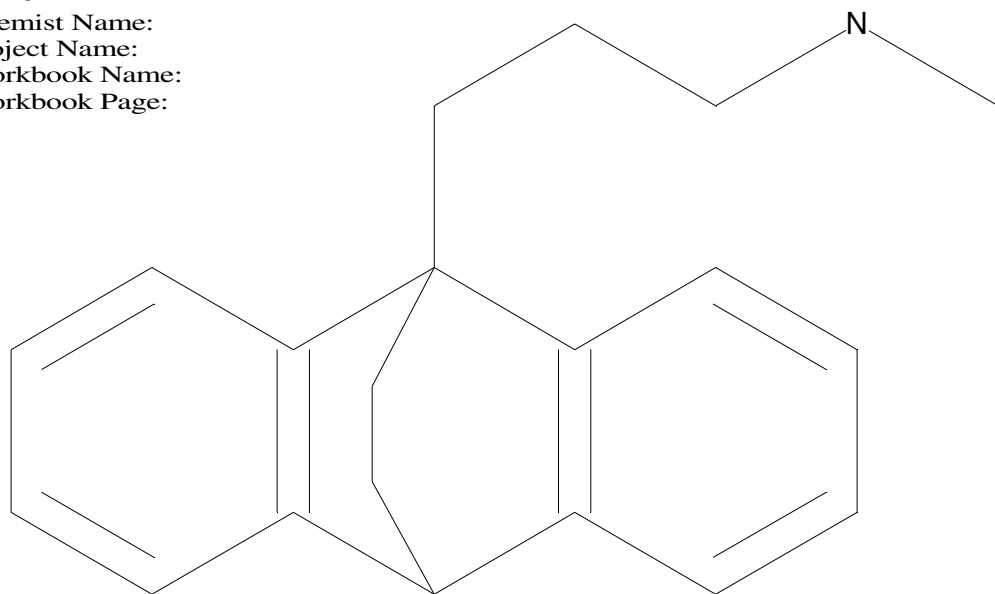
Instrument Model: QTrap
 Ion Source: Turbo Spray
 Polarity: Positive
 Scan Type: EPI
 1st Precursor m/z: 278.0000
 Collision Energy1(V): 20.0000
 Charge State1: 1
 CAD Gas Type:
 CAD Gas Value: Level 4
 Retention Time(min): 0.96
 Resolution: unit
 Comment2:
 Comment3:

© Copyright 2007 by
 W. Weinmann
 S. Dresen
www.chemicalsoft.de

“CE (99.0)”: CE spread 35+/-15 eV

C20H23N

Chemist Name:
Project Name:
Workbook Name:
Workbook Page:



© Copyright 2007 by
W. Weinmann
S. Dresen
www.chemicalsoft.de

“CE (99.0)“: CE spread 35+/-15 eV