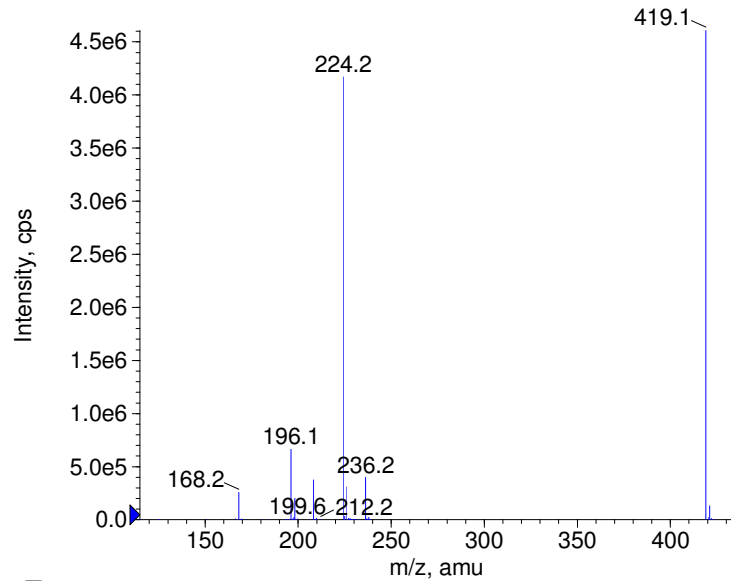
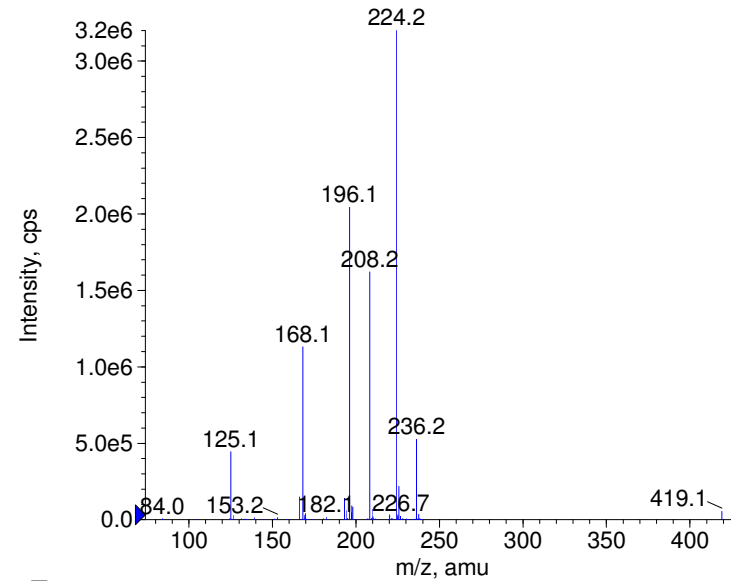


Compound Name: Lofepamine
 Synonyms:
 Formula: C₂₆H₂₇CIN₂O
 CAS Number: 23047-25-8
 Molecular weight(amu): 418.1811
 Compound Class: antidepressant
 Compound ID: L016b
 User Value: 0.0000
 Keyword:
 Internal Standard: No
 Comment1:

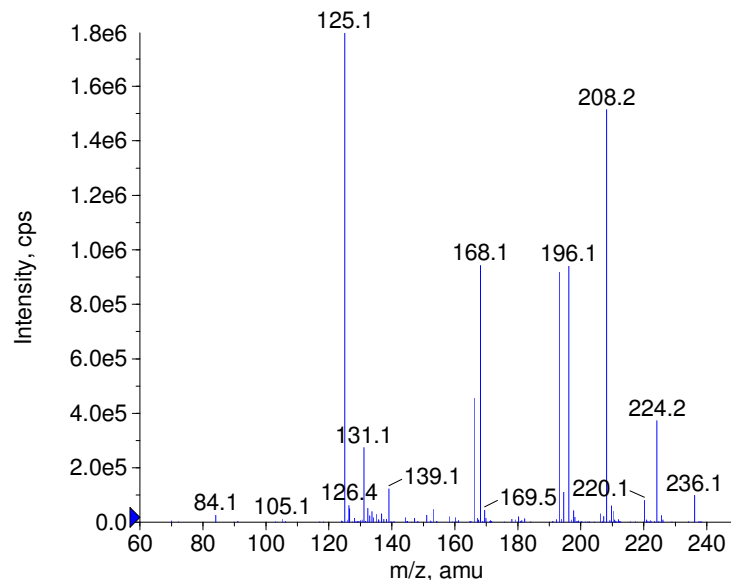
■ + Lofepamine Prec(419.0) CE(20.0) RT(1.3)



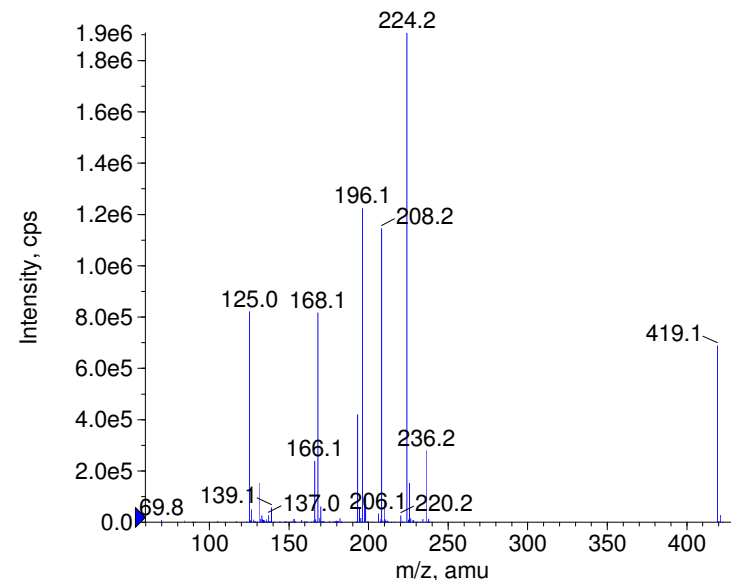
■ + Lofepamine Prec(419.0) CE(35.0) RT(1.3)



■ + Lofepamine Prec(419.0) CE(50.0) RT(1.3)



■ + Lofepamine Prec(419.0) CE(99.0) RT(1.3)



© Copyright 2007 by
 W. Weinmann
 S. Dresen
www.chemicalsoft.de

“CE (99.0)”: CE spread 35+/-15 eV

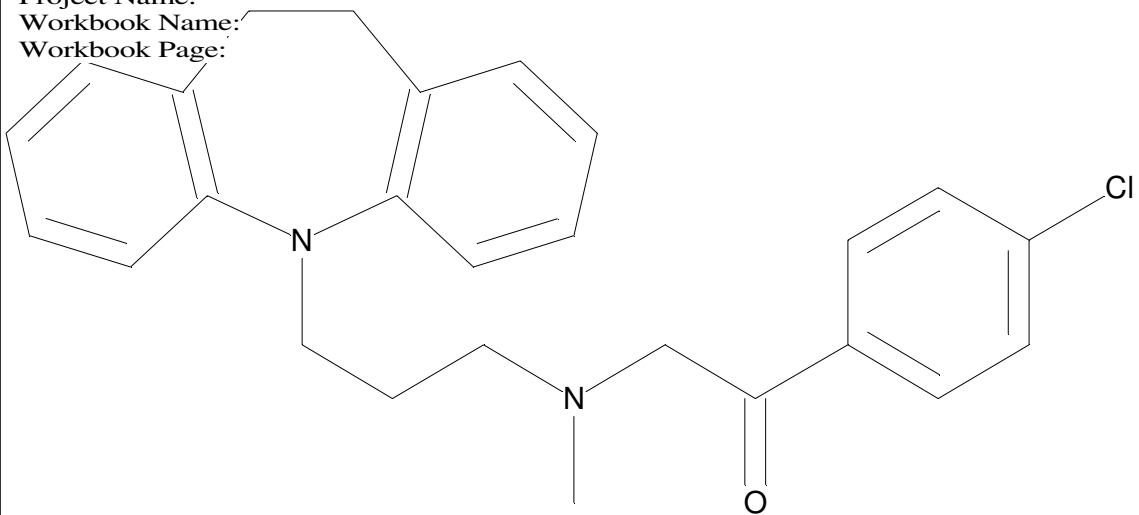
C26H27N2OCl

Chemist Name:

Project Name:

Workbook Name:

Workbook Page:



© Copyright 2007 by
W. Weinmann
S. Dresen
www.chemicalsoft.de

“CE (99.0)“: CE spread 35+/-15 eV