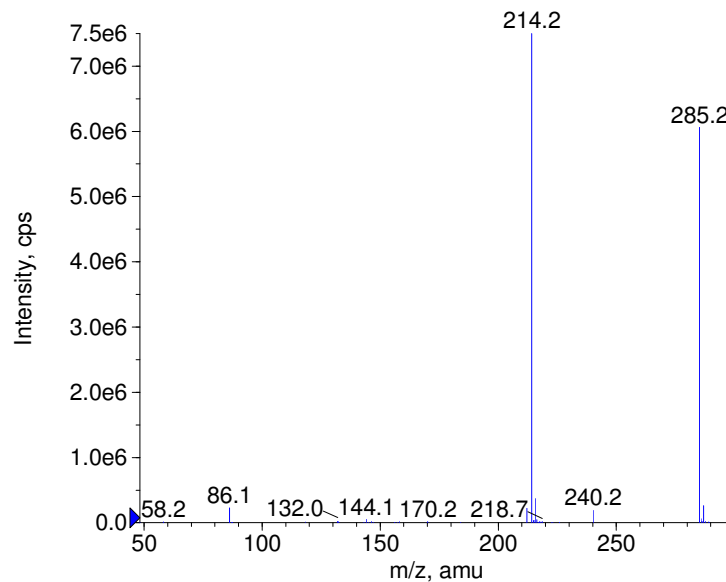
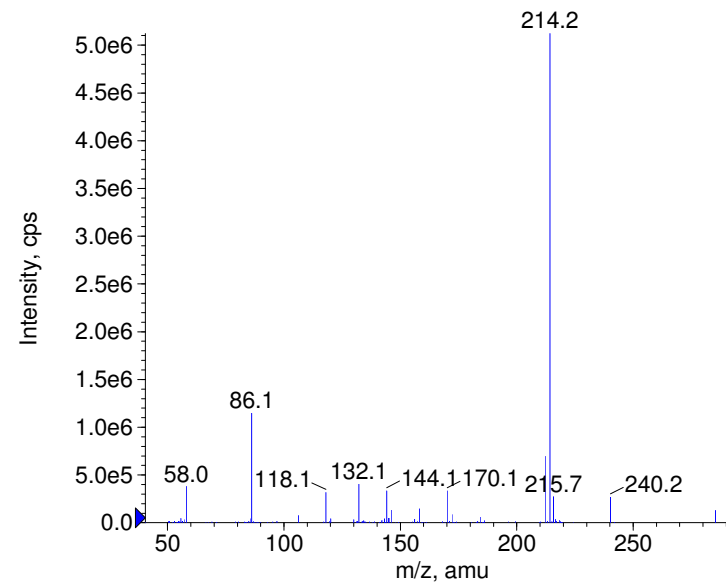


Compound Name: Iprindole
 Synonyms:
 Formula: C19H28N2
 CAS Number: 5560-72-5
 Molecular weight(amu): 284.2251
 Compound Class: antidepressant
 Compound ID: I085
 User Value: 0.0000
 Keyword:
 Internal Standard: No
 Comment1:

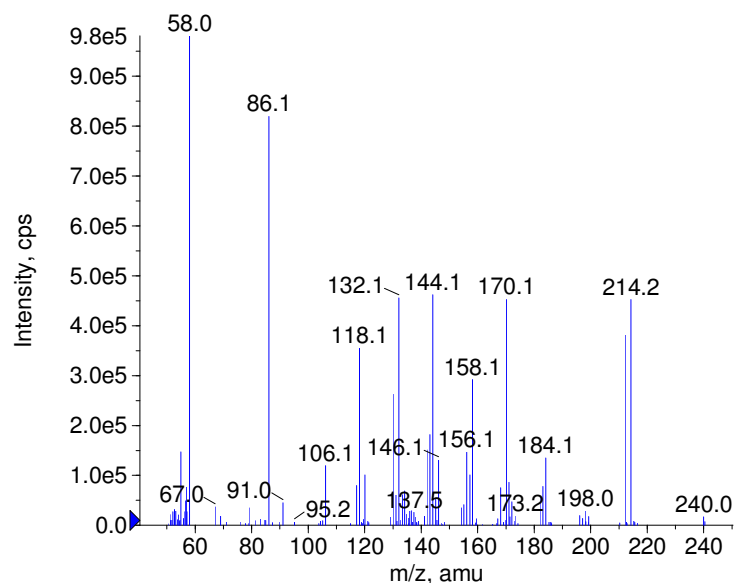
+ Iprindole Prec(285.0) CE(20.0) RT(0.9)



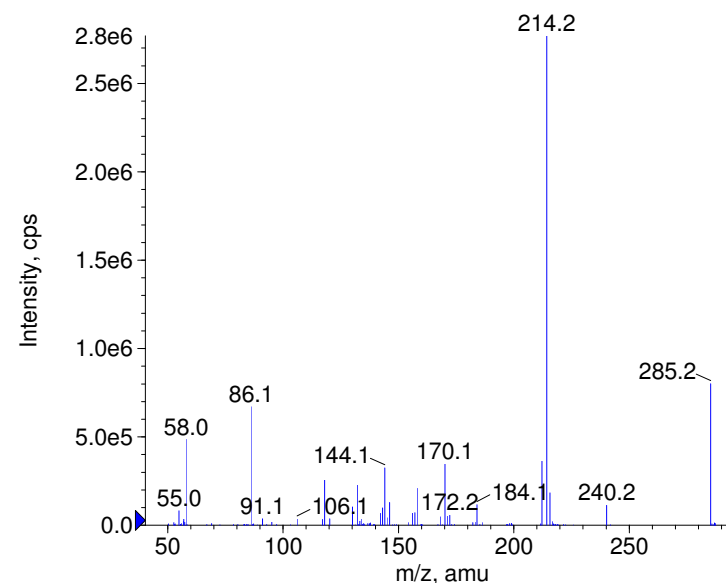
+ Iprindole Prec(285.0) CE(35.0) RT(0.9)



+ Iprindole Prec(285.0) CE(50.0) RT(0.9)



+ Iprindole Prec(285.0) CE(99.0) RT(1.0)

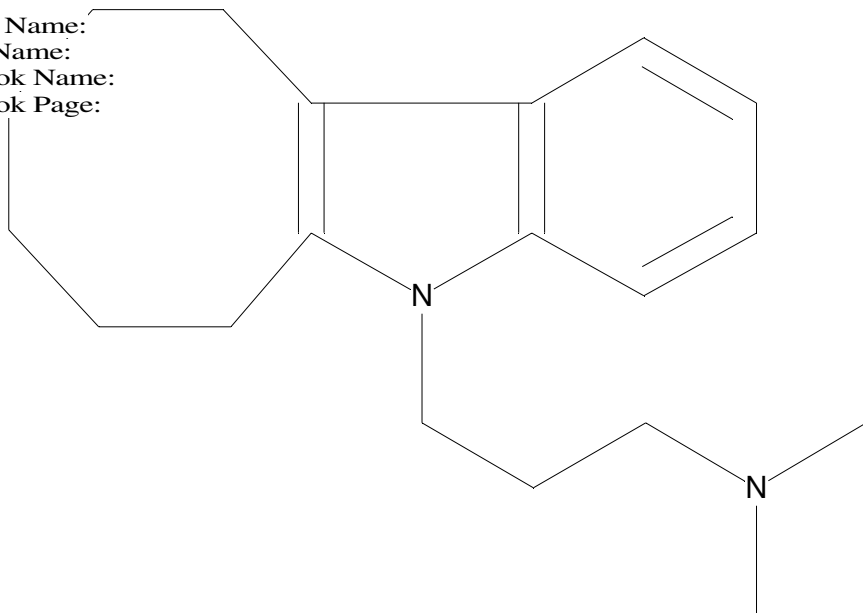


© Copyright 2007 by
 W. Weinmann
 S. Dresen
www.chemicalsoft.de

“CE (99.0)”: CE spread 35+/-15 eV

C19H28N2

Chemist Name:
Project Name:
Workbook Name:
Workbook Page:



© Copyright 2007 by
W. Weinmann
S. Dresen
www.chemicalsoft.de

“CE (99.0)“: CE spread 35+/-15 eV