

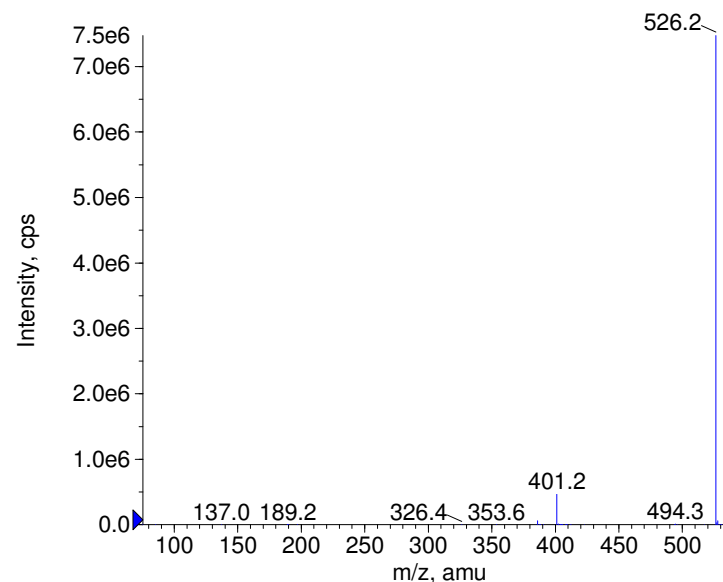
Compound Name: Gliquidone
Synonyms:
Formula: C27H33N3O6S
CAS Number: 33342-05-1
Molecular weight(amu): 527.2089
Compound Class: antidiabetic
Compound ID:
User Value: 0.0000
Keyword:
Internal Standard: No
Comment1:

Instrument Model: QTrap
Ion Source: Turbo Spray
Polarity: Negative
Scan Type: EPI
1st Precursor m/z: 526.0000
Collision Energy1(V): -20.0000
Charge State1: -1
CAD Gas Type:
CAD Gas Value: Level 4
Retention Time(min): 1.80
Resolution: unit
Comment2:
Comment3:

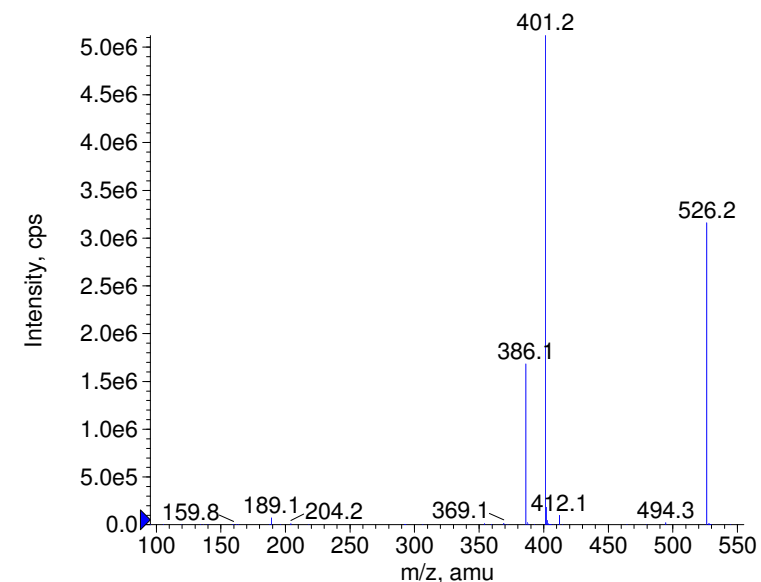
© Copyright 2007 by
W. Weinmann
S. Dresen
www.chemicalsoft.de

“CE (99.0)”: CE spread 35+/-15 eV

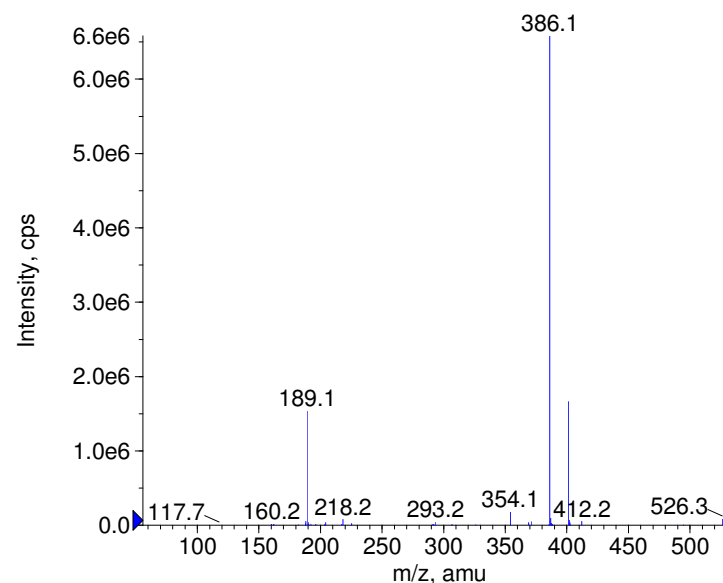
■ - Gliquidone Prec(526.0) CE(-20.0) RT(1.8)



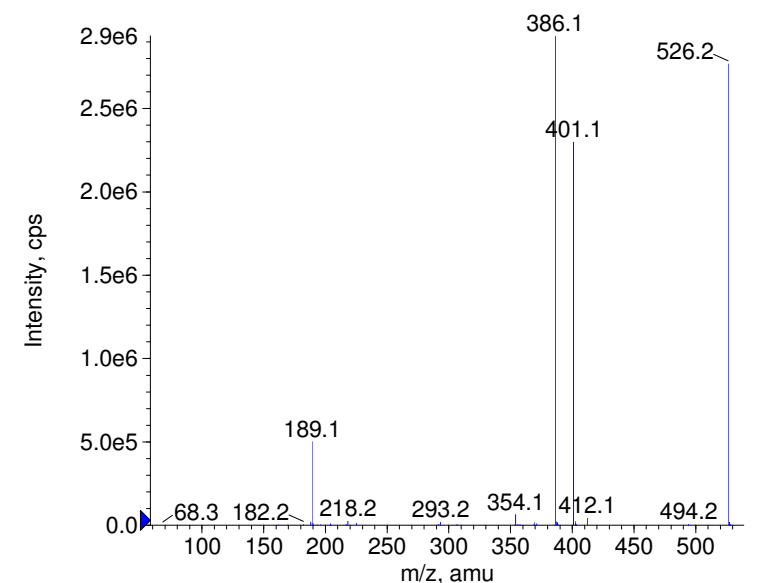
■ - Gliquidone Prec(526.0) CE(-35.0) RT(1.8)

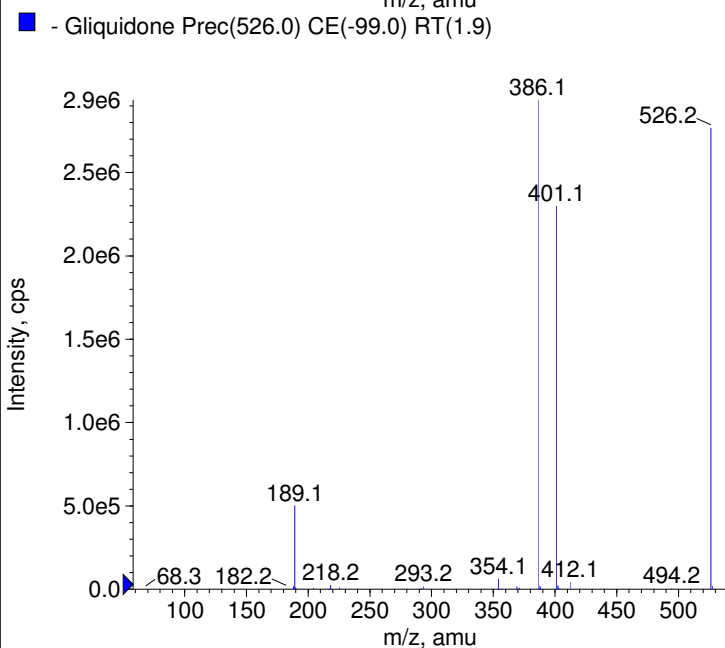
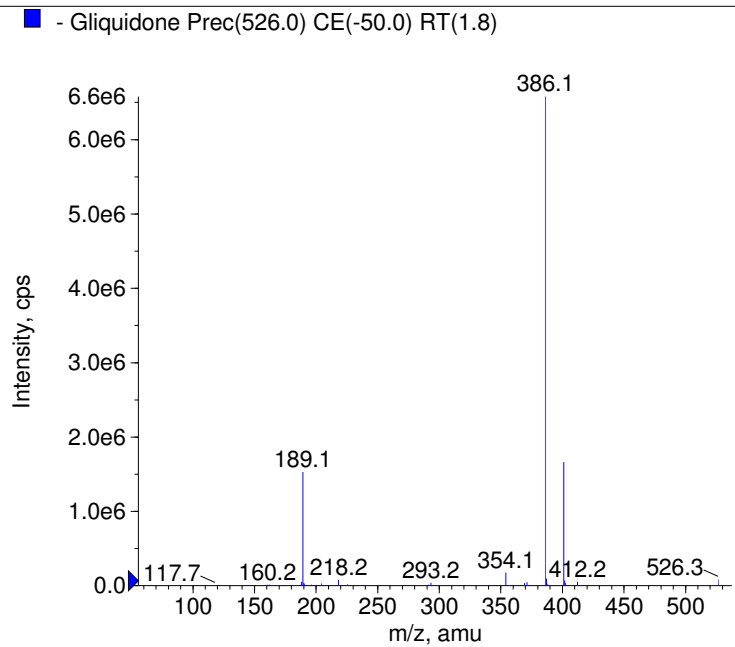
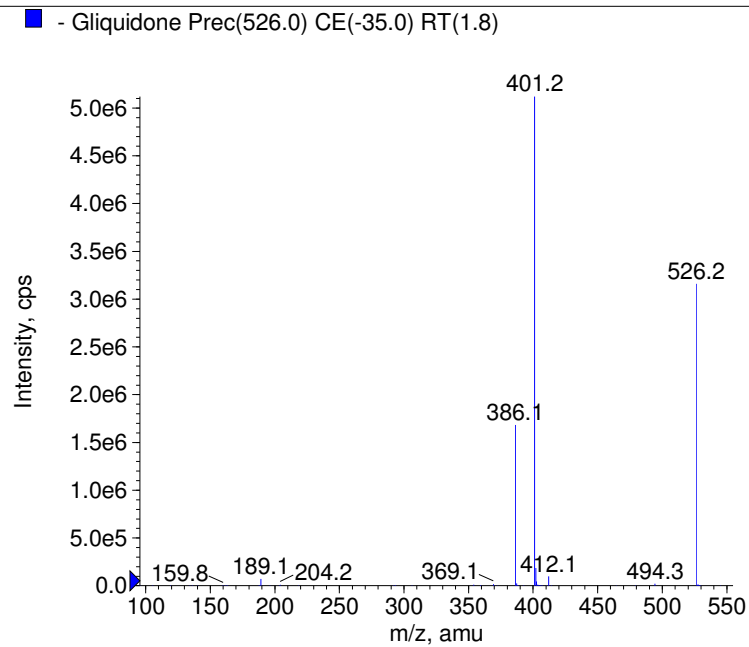
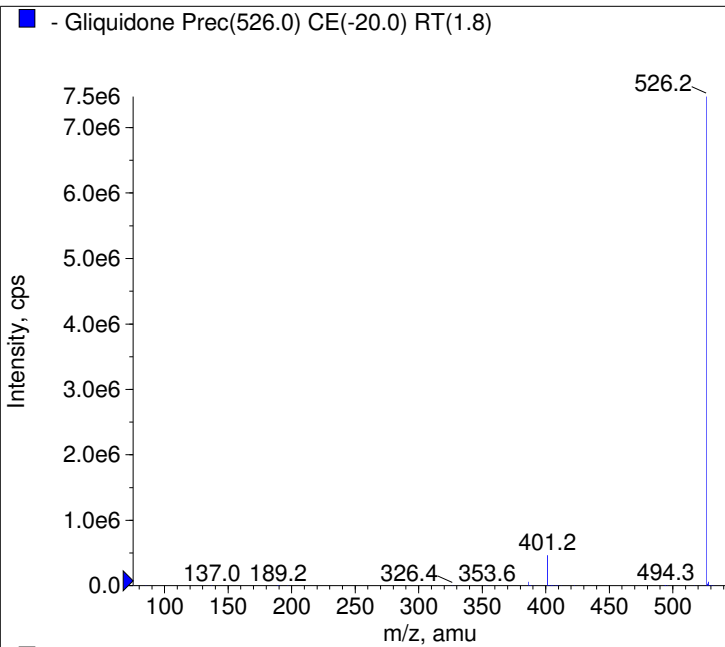


■ - Gliquidone Prec(526.0) CE(-50.0) RT(1.8)



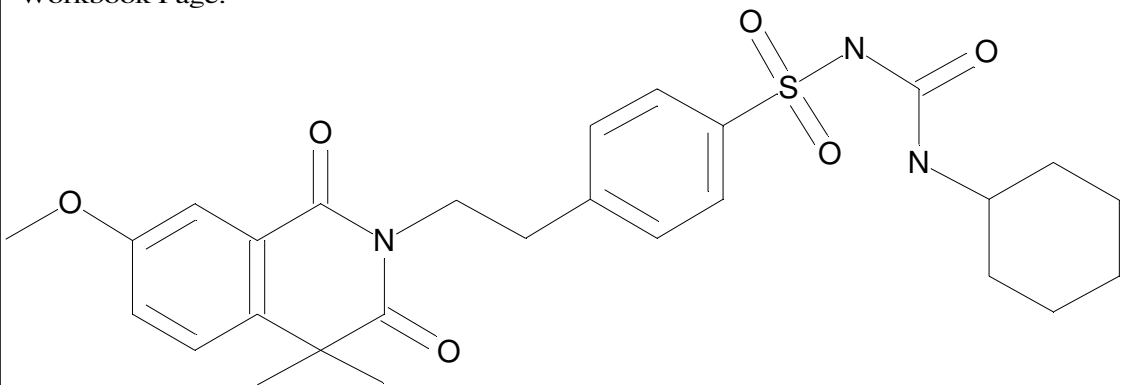
■ - Gliquidone Prec(526.0) CE(-99.0) RT(1.9)





C27H33N3O6S

Chemist Name:
Project Name:
Workbook Name:
Workbook Page:



© Copyright 2007 by
W. Weinmann
S. Dresen
www.chemicalsoft.de

“CE (99.0)“: CE spread 35+/-15 eV