

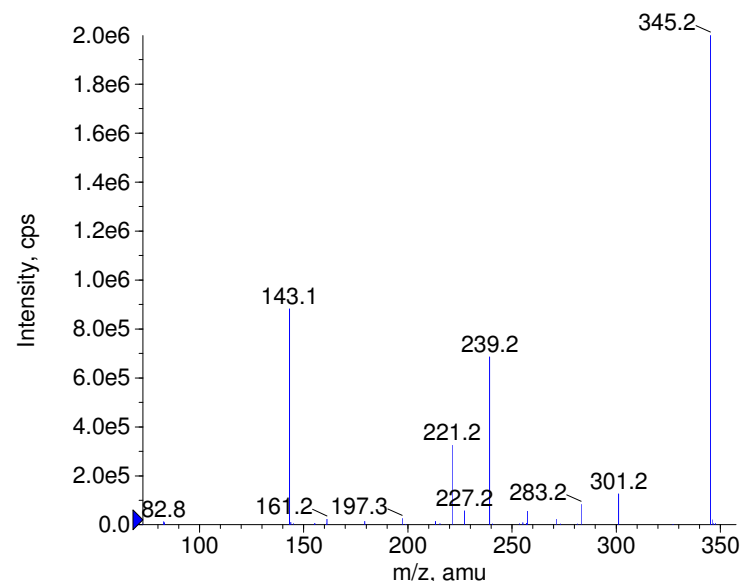
Compound Name: Gibberelic acid
 Synonyms:
 Formula: C₁₉H₂₂O₆
 CAS Number: 77-06-5
 Molecular weight(amu): 346.1416
 Compound Class: plant growth regulator
 Compound ID: G024
 User Value: 0.0000
 Keyword:
 Internal Standard: No
 Comment1:

Instrument Model: QTrap
 Ion Source: Turbo Spray
 Polarity: Negative
 Scan Type: EPI
 1st Precursor m/z: 345.0000
 Collision Energy1(V): -20.0000
 Charge State1: -1
 CAD Gas Type:
 CAD Gas Value: Level 4
 Retention Time(min): 0.86
 Resolution: unit
 Comment2:
 Comment3:

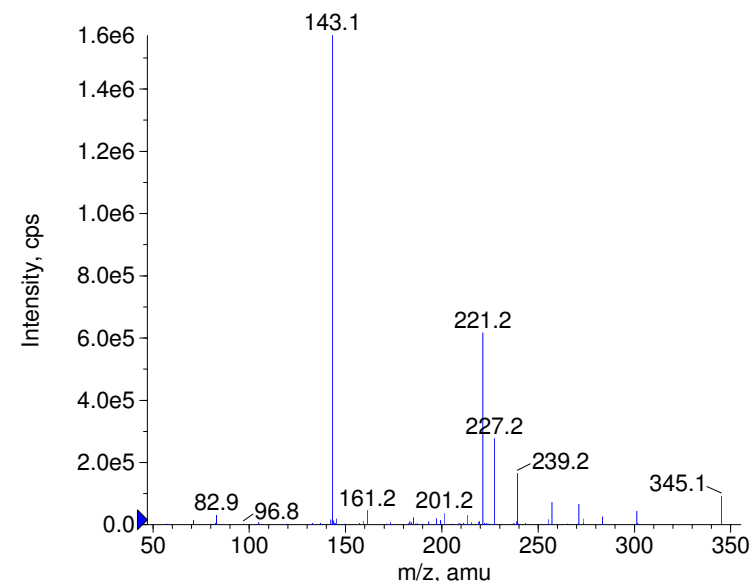
© Copyright 2007 by
 W. Weinmann
 S. Dresen
www.chemicalsoft.de

“CE (99.0)”: CE spread 35+/-15 eV

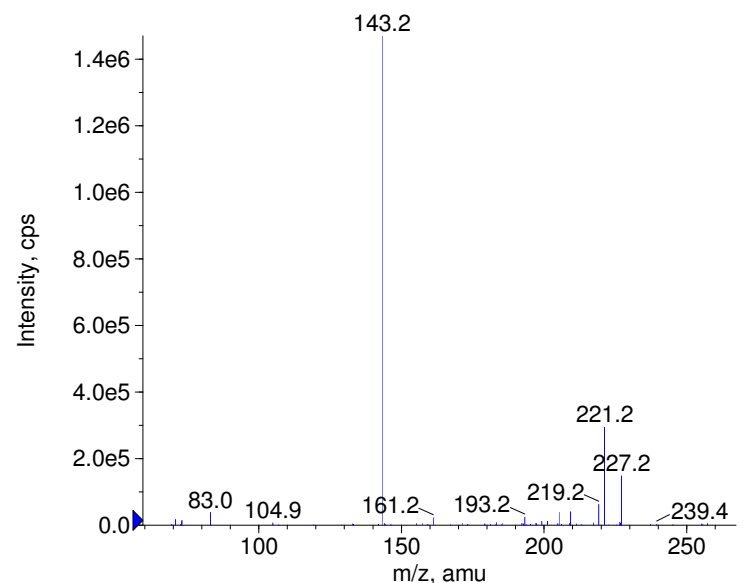
■ - Gibberelic acid Prec(345.0) CE(-20.0) RT(0.9)



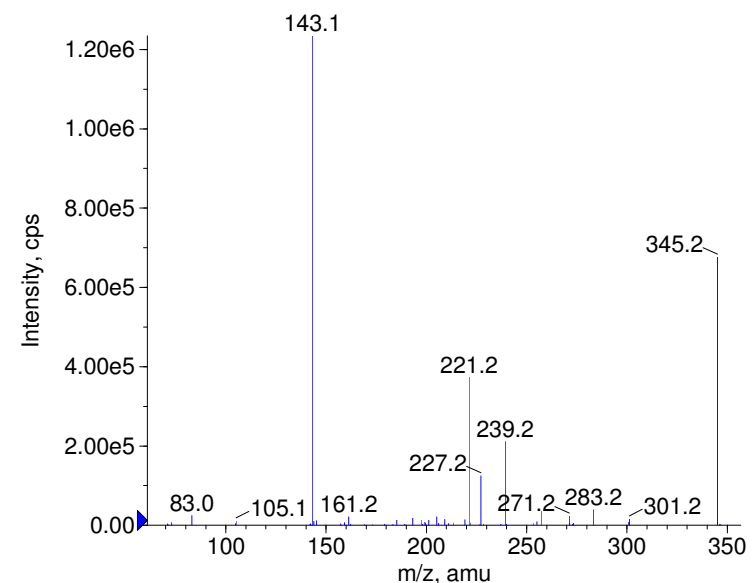
■ - Gibberelic acid Prec(345.0) CE(-35.0) RT(0.9)



■ - Gibberelic acid Prec(345.0) CE(-50.0) RT(0.9)

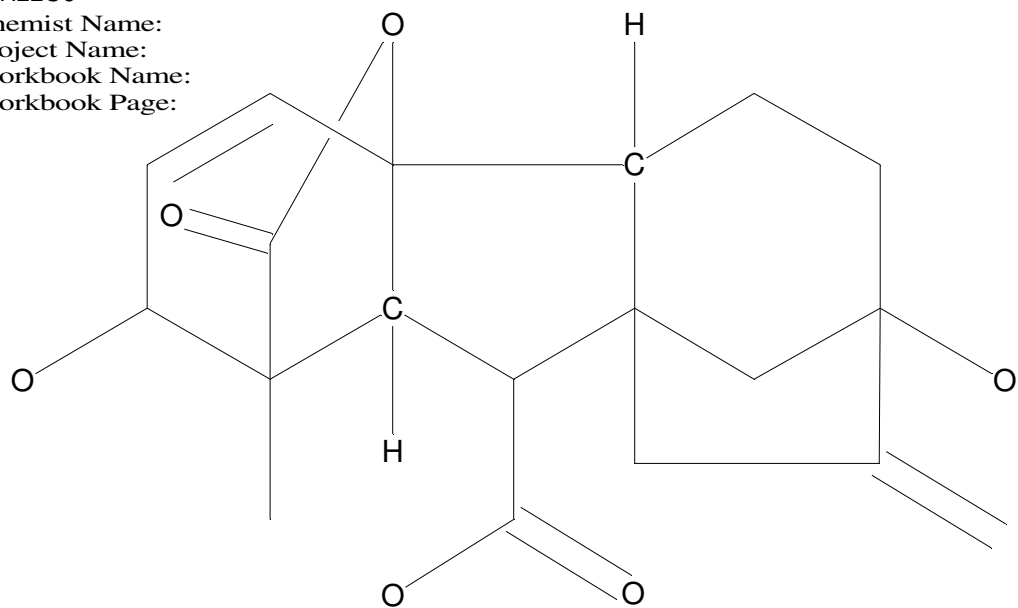


■ - Gibberelic acid Prec(345.0) CE(-99.0) RT(0.9)



C19H22O6

Chemist Name:
Project Name:
Workbook Name:
Workbook Page:



© Copyright 2007 by
W. Weinmann
S. Dresen
www.chemicalsoft.de

“CE (99.0)“: CE spread 35+/-15 eV