

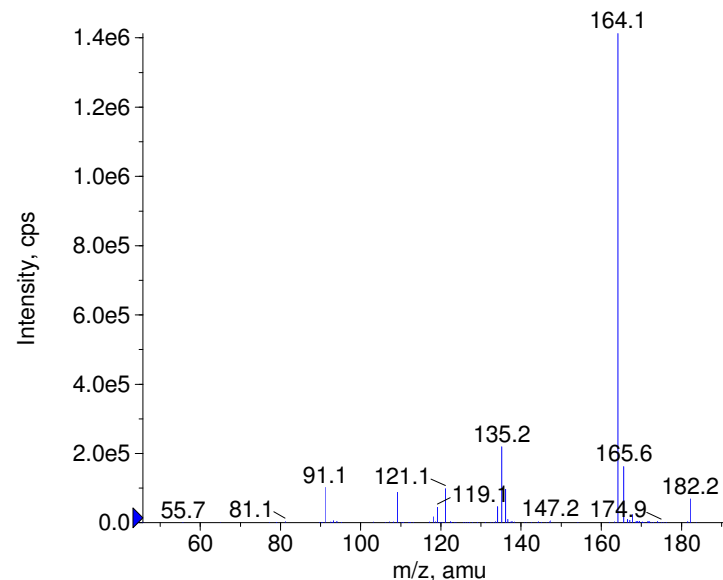
Compound Name: Etilefrine
 Synonyms:
 Formula: C₁₀H₁₅NO₂
 CAS Number: 709-55-7
 Molecular weight(amu): 181.1102
 Compound Class: sympathomimetic, antihypnotic
 Compound ID: E018
 User Value: 0.0000
 Keyword:
 Internal Standard: No
 Comment1:

Instrument Model: QTrap
 Ion Source: Turbo Spray
 Polarity: Positive
 Scan Type: EPI
 1st Precursor m/z: 182.0000
 Collision Energy1(V): 20.0000
 Charge State1: 1
 CAD Gas Type:
 CAD Gas Value: Level 4
 Retention Time(min): 0.78
 Resolution:
 Comment2: unit
 Comment3:

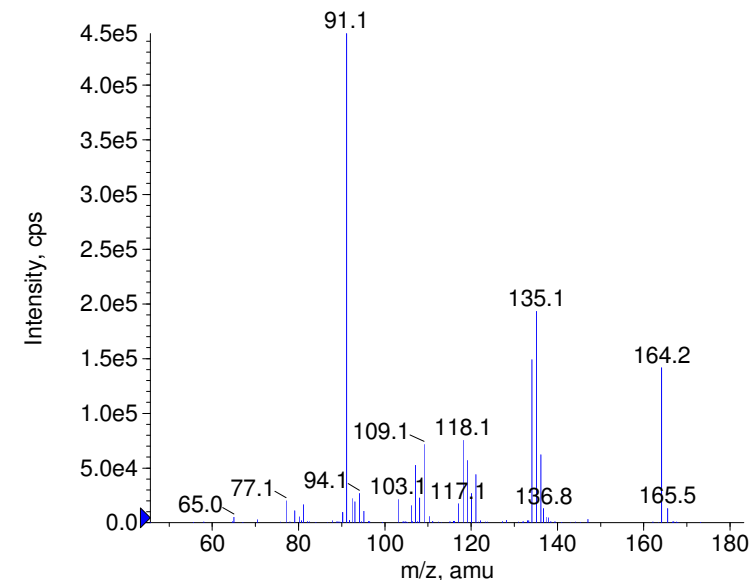
© Copyright 2007 by
 W. Weinmann
 S. Dresen
www.chemicalsoft.de

“CE (99.0)”: CE spread 35+/-15 eV

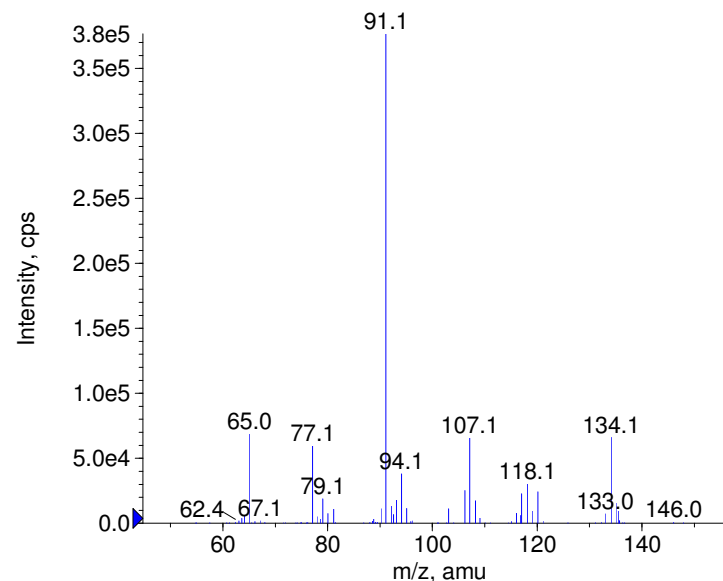
+ Etilefrine Prec(182.0) CE(20.0) RT(0.8)



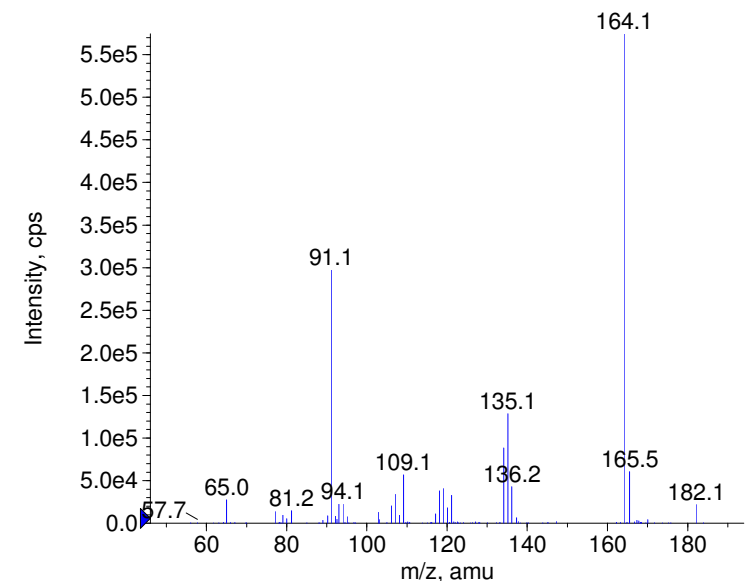
+ Etilefrine Prec(182.0) CE(35.0) RT(0.8)



+ Etilefrine Prec(182.0) CE(50.0) RT(0.8)

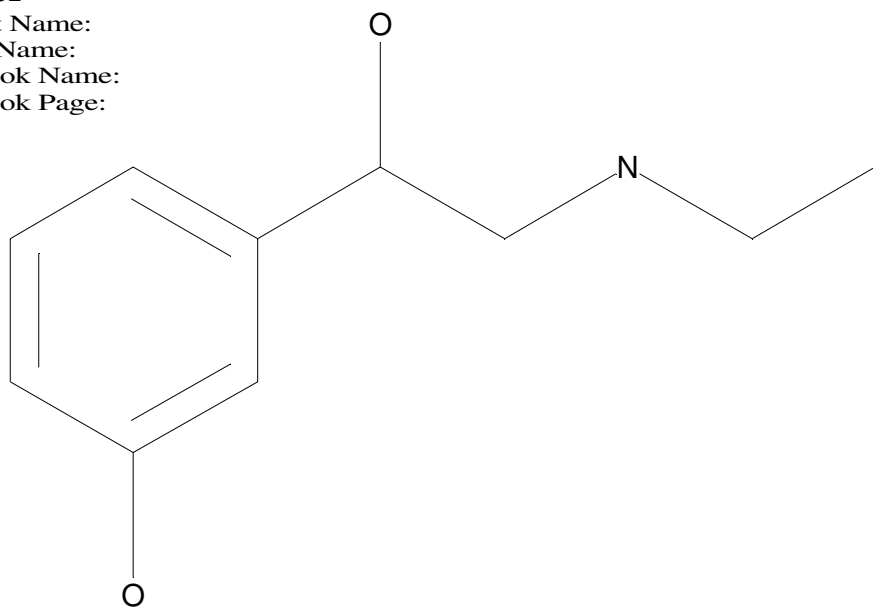


+ Etilefrine Prec(182.0) CE(99.0) RT(0.8)



C10H15NO2

Chemist Name:
Project Name:
Workbook Name:
Workbook Page:



© Copyright 2007 by
W. Weinmann
S. Dresen
www.chemicalsoft.de

“CE (99.0)“: CE spread 35+/-15 eV