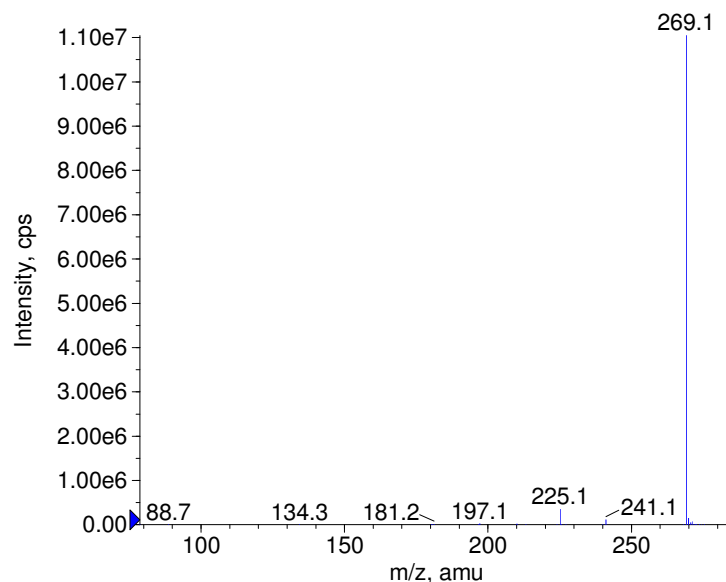
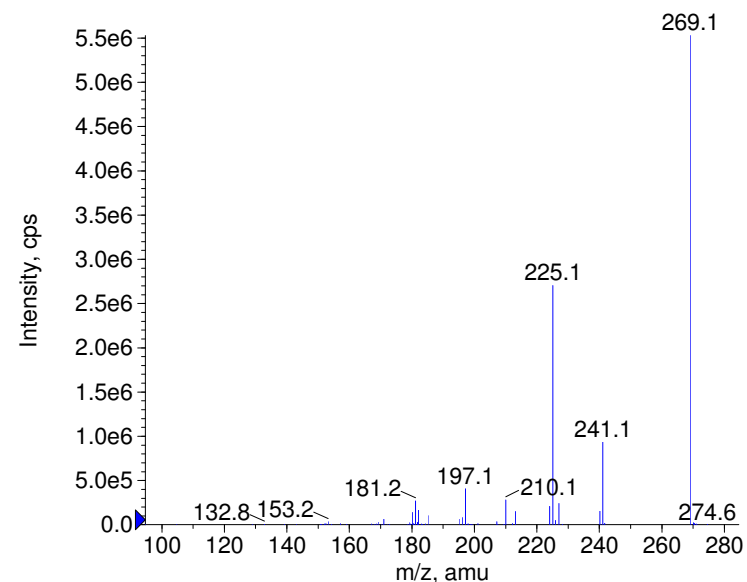


Compound Name: Emodin  
 Synonyms:  
 Formula: C<sub>15</sub>H<sub>10</sub>O<sub>5</sub>  
 CAS Number: 518-82-1  
 Molecular weight(amu): 270.0528  
 Compound Class: cathartic  
 Compound ID: E159  
 User Value: 0.0000  
 Keyword:  
 Internal Standard: No  
 Comment1:

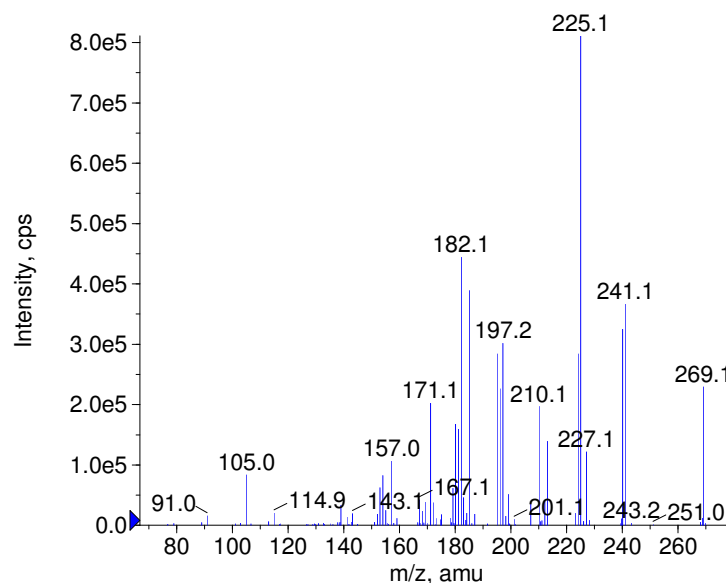
■ - Emodin Prec(269.0) CE(-20.0) RT(1.3)



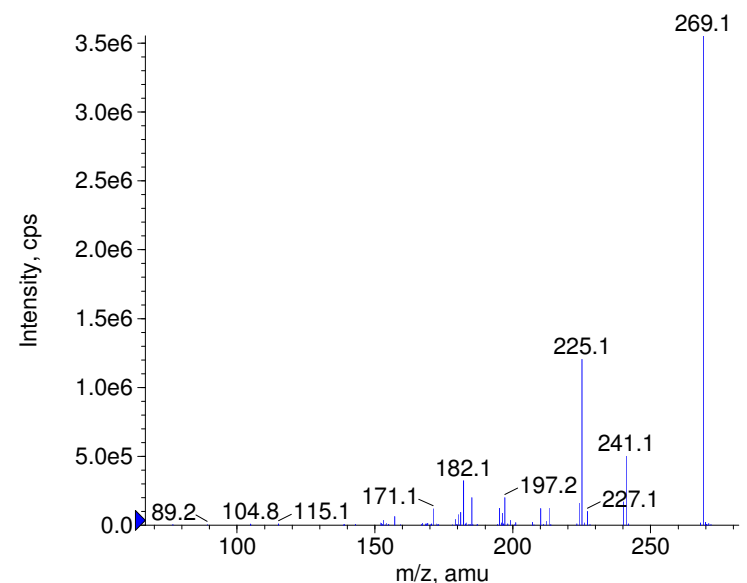
■ - Emodin Prec(269.0) CE(-35.0) RT(1.3)



■ - Emodin Prec(269.0) CE(-50.0) RT(1.3)



■ - Emodin Prec(269.0) CE(-99.0) RT(1.3)



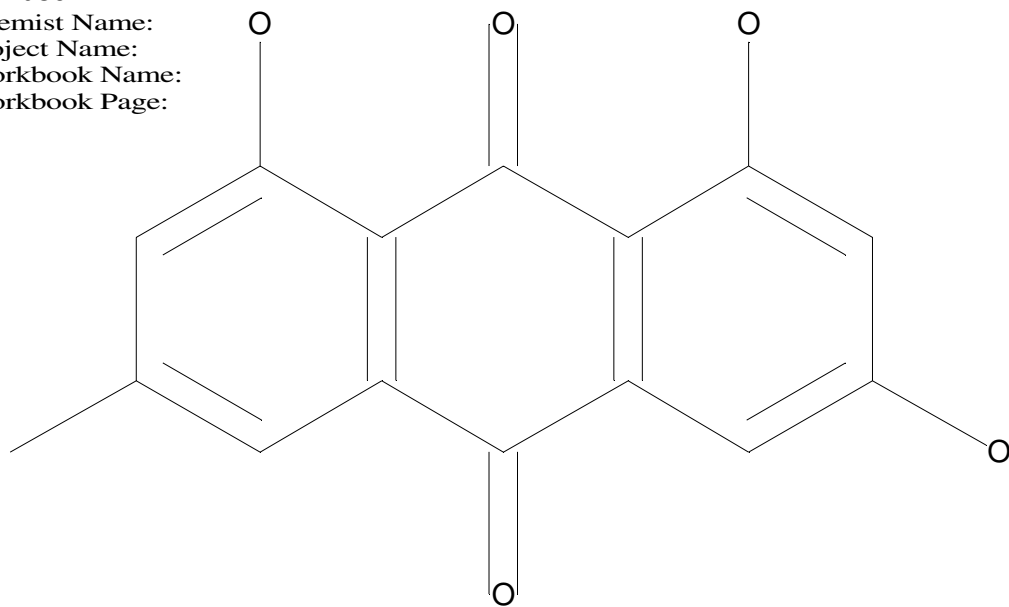
Instrument Model: QTrap  
 Ion Source: Turbo Spray  
 Polarity: Negative  
 Scan Type: EPI  
 1st Precursor m/z: 269.0000  
 Collision Energy1(V): -20.0000  
 Charge State1: -1  
 CAD Gas Type:  
 CAD Gas Value: Level 4  
 Retention Time(min): 1.25  
 Resolution: unit  
 Comment2:  
 Comment3:

© Copyright 2007 by  
 W. Weinmann  
 S. Dresen  
[www.chemicalsoft.de](http://www.chemicalsoft.de)

“CE (99.0)”: CE spread 35+/-15 eV

C15H10O5

Chemist Name:  
Project Name:  
Workbook Name:  
Workbook Page:



© Copyright 2007 by  
W. Weinmann  
S. Dresen  
[www.chemicalsoft.de](http://www.chemicalsoft.de)

“CE (99.0)“: CE spread 35+/-15 eV