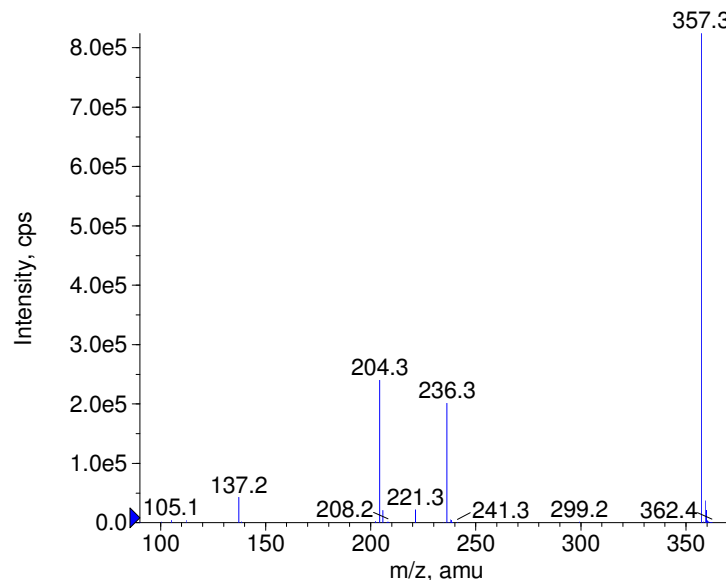
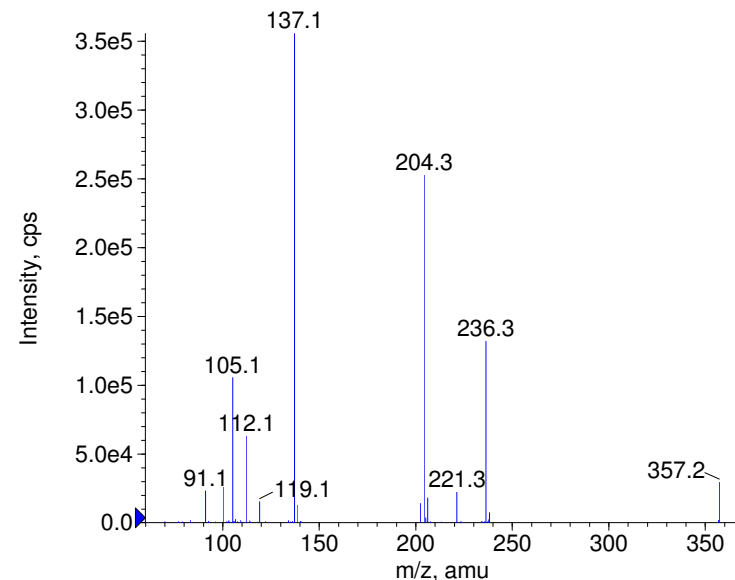


Compound Name: Dopexamine
 Synonyms:
 Formula: C22H32N2O2
 CAS Number: 86197-47-9
 Molecular weight(amu): 356.2463
 Compound Class: cardiovascular agent
 Compound ID: D220
 User Value: 0.0000
 Keyword:
 Internal Standard: No
 Comment1:

■ + Dopexamine Prec(357.0) CE(20.0) RT(0.8)

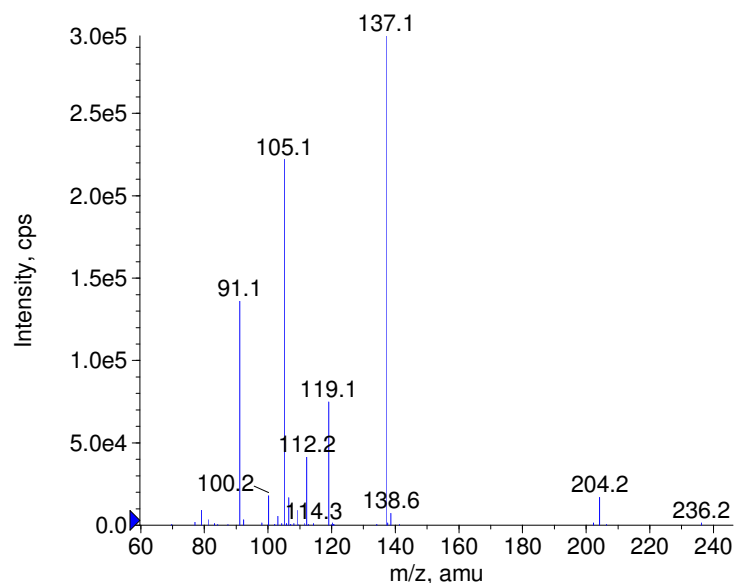


■ + Dopexamine Prec(357.0) CE(35.0) RT(0.8)

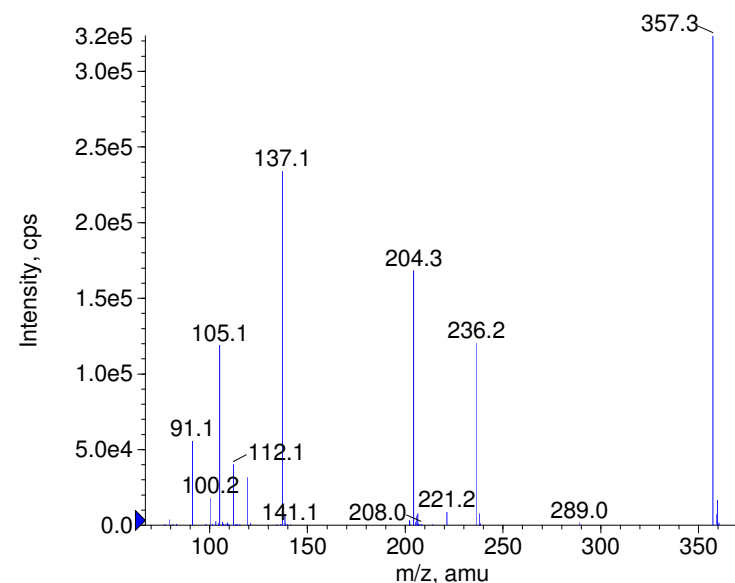


Instrument Model: QTrap
 Ion Source: Turbo Spray
 Polarity: Positive
 Scan Type: EPI
 1st Precursor m/z: 357.0000
 Collision Energy1(V): 20.0000
 Charge State1: 1
 CAD Gas Type:
 CAD Gas Value: Level 4
 Retention Time(min): 0.77
 Resolution: unit
 Comment2:
 Comment3:

■ + Dopexamine Prec(357.0) CE(50.0) RT(0.8)



■ + Dopexamine Prec(357.0) CE(99.0) RT(0.8)



© Copyright 2007 by
 W. Weinmann
 S. Dresen
www.chemicalsoft.de

“CE (99.0)”: CE spread 35+/-15 eV

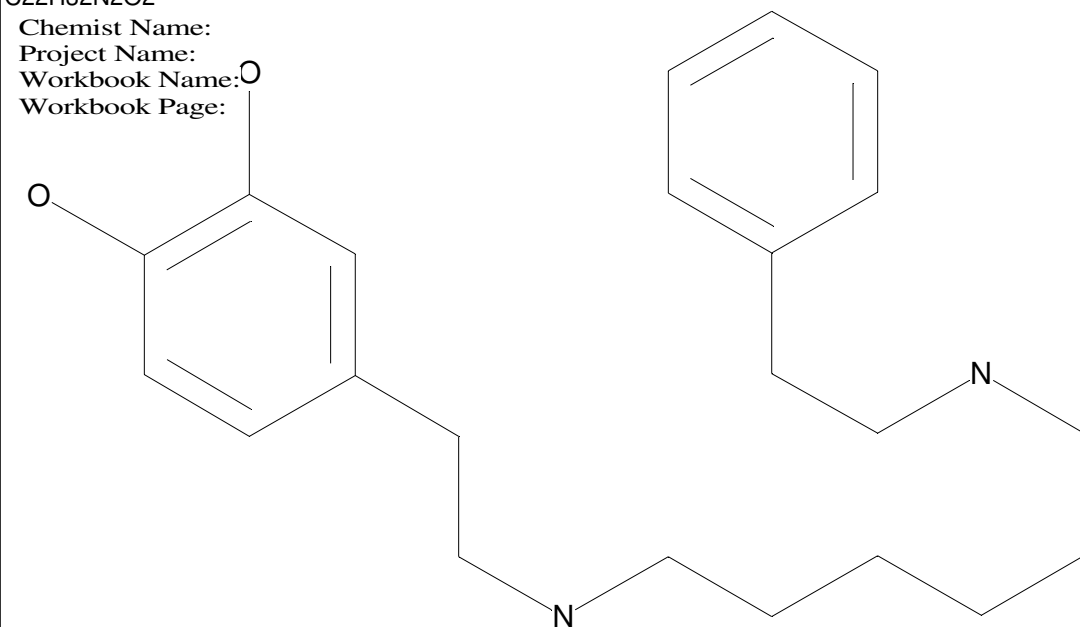
C22H32N2O2

Chemist Name:

Project Name:

Workbook Name:

Workbook Page:



© Copyright 2007 by
W. Weinmann
S. Dresen

www.chemicalsoft.de

“CE (99.0)“: CE spread 35+/-15 eV