

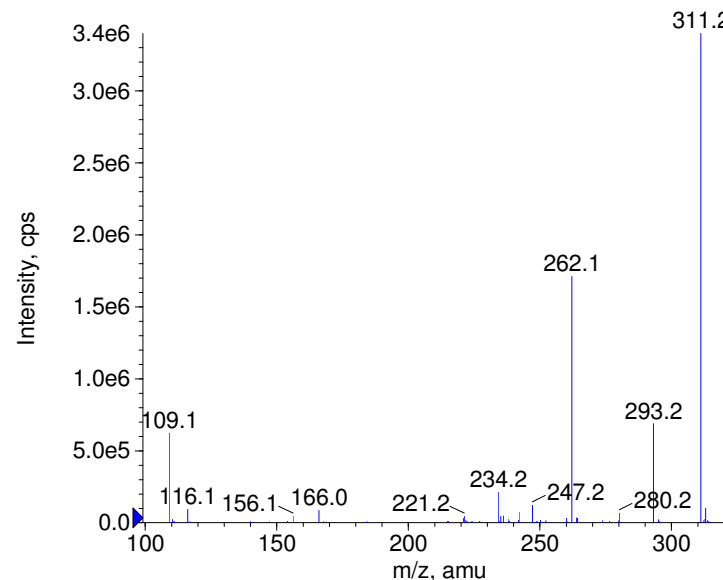
Compound Name: Desmethylcitalopram  
Synonyms:  
Formula: C19H19N2OF  
CAS Number:  
Molecular weight(amu):310.1481  
Compound Class: metabolite of citalopram  
Compound ID:  
User Value: 0.0000  
Keyword:  
Internal Standard: No  
Comment1: obtained from patients urine

Instrument Model: QTrap  
Ion Source: Turbo Spray  
Polarity: Positive  
Scan Type: EPI  
1st Precursor m/z: 311.0000  
Collision Energy1(V): 20.0000  
Charge State1: 1  
CAD Gas Type:  
CAD Gas Value: Level 4  
Retention Time(min): 12.49  
Resolution: unit  
Comment2:  
Comment3:

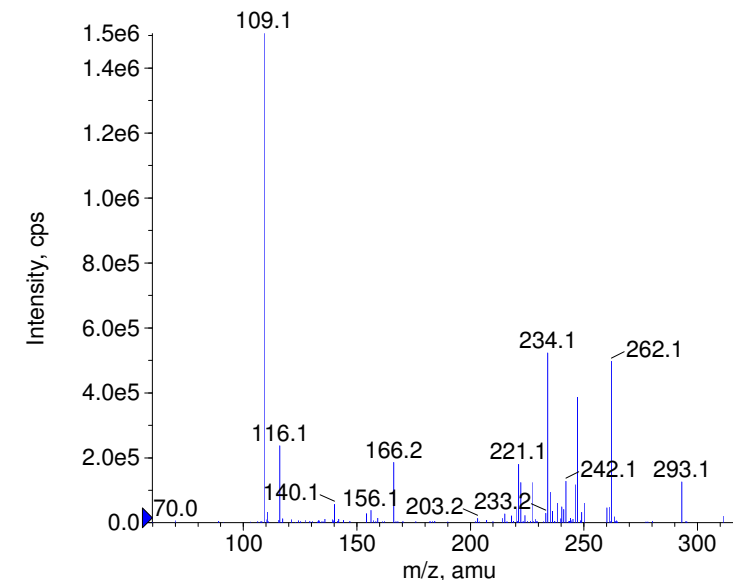
© Copyright 2007 by  
W. Weinmann  
S. Dresen  
[www.chemicalsoft.de](http://www.chemicalsoft.de)

“CE (99.0)”: CE spread 35+/-15 eV

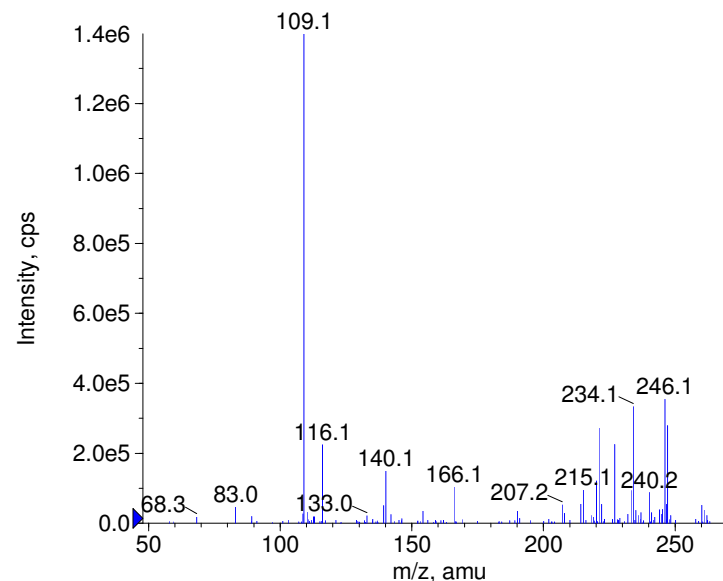
+ Desmethylcitalopram Prec(311.0) CE(20.0) RT(12.5)



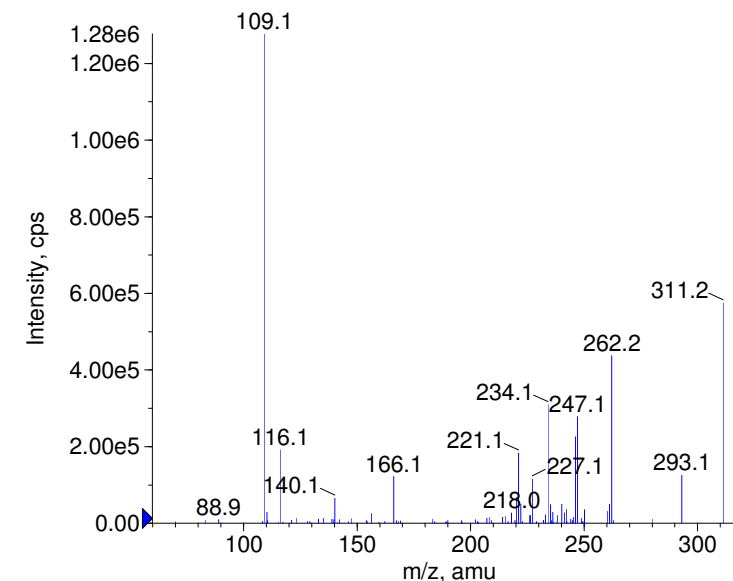
+ Desmethylcitalopram Prec(311.0) CE(35.0) RT(12.5)



+ Desmethylcitalopram Prec(311.0) CE(50.0) RT(12.5)

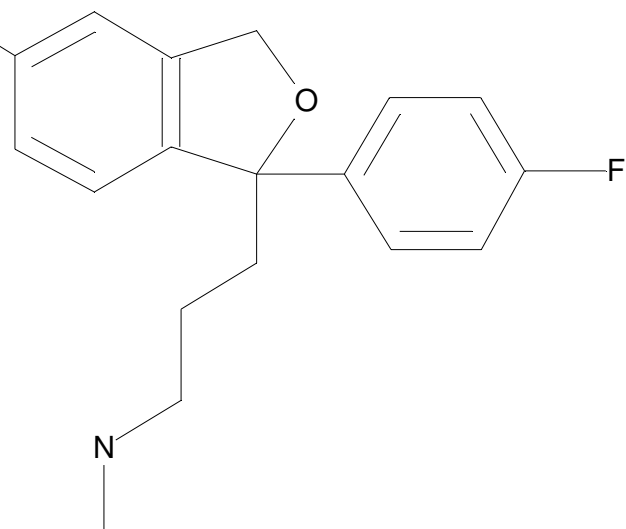


+ Desmethylcitalopram Prec(311.0) CE(99.0) RT(12.5)



C19H19N2OF

Chemist Name:  
Project Name:  
Workbook Name:  
Workbook Page:



© Copyright 2007 by  
W. Weinmann  
S. Dresen  
[www.chemicalsoft.de](http://www.chemicalsoft.de)

“CE (99.0)“: CE spread 35+/-15 eV