

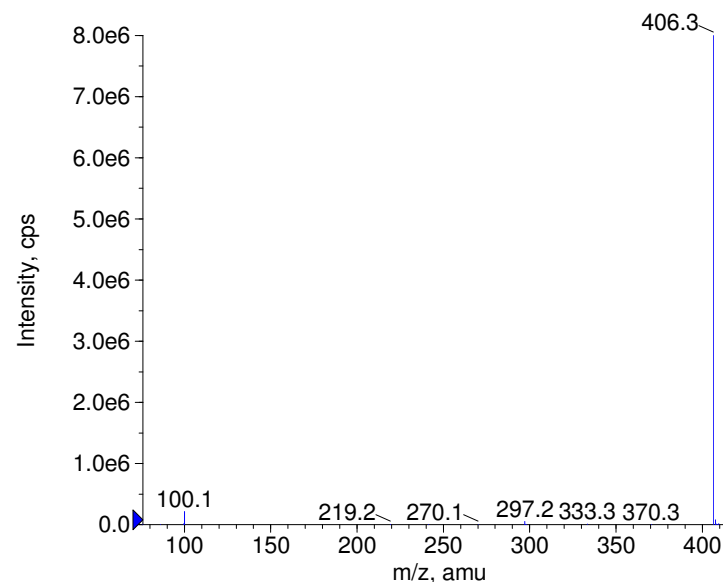
Compound Name: Clomiphene
Synonyms:
Formula: C₂₆H₂₈ClNO
CAS Number: 911-45-5
Molecular weight(amu): 405.1859
Compound Class: antiestrogen
Compound ID: C169
User Value: 0.0000
Keyword:
Internal Standard: No
Comment1:

Instrument Model: QTrap
Ion Source: Turbo Spray
Polarity: Positive
Scan Type: EPI
1st Precursor m/z: 406.0000
Collision Energy1(V): 20.0000
Charge State1: 1
CAD Gas Type:
CAD Gas Value: Level 4
Retention Time(min): 0.99
Resolution: unit
Comment2:
Comment3:

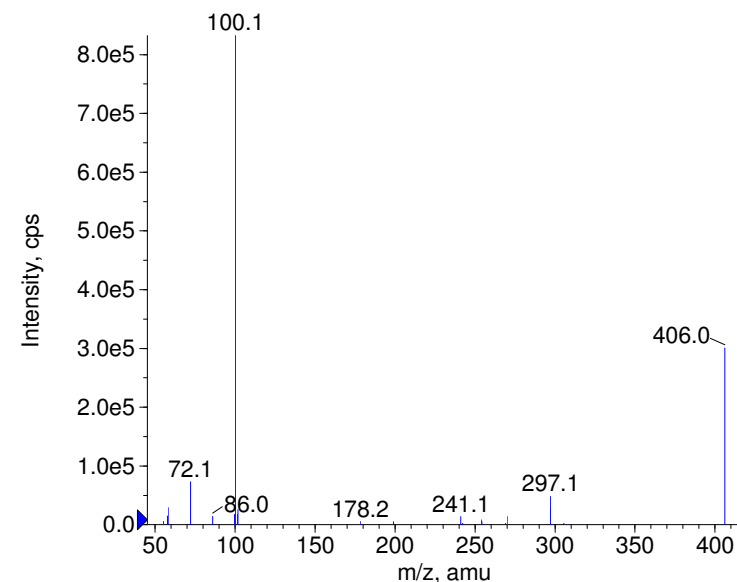
© Copyright 2007 by
W. Weinmann
S. Dresen
www.chemicalsoft.de

“CE (99.0)”: CE spread 35+/-15 eV

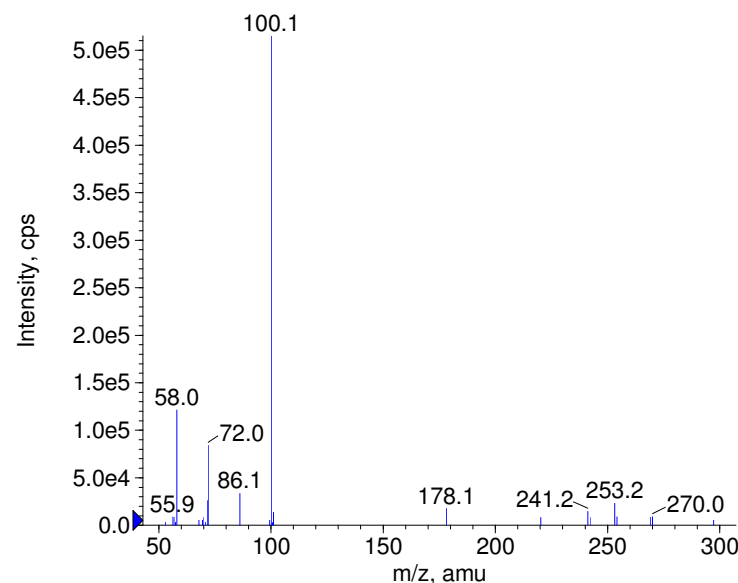
+ Clomiphene Prec(406.0) CE(20.0) RT(1.0)



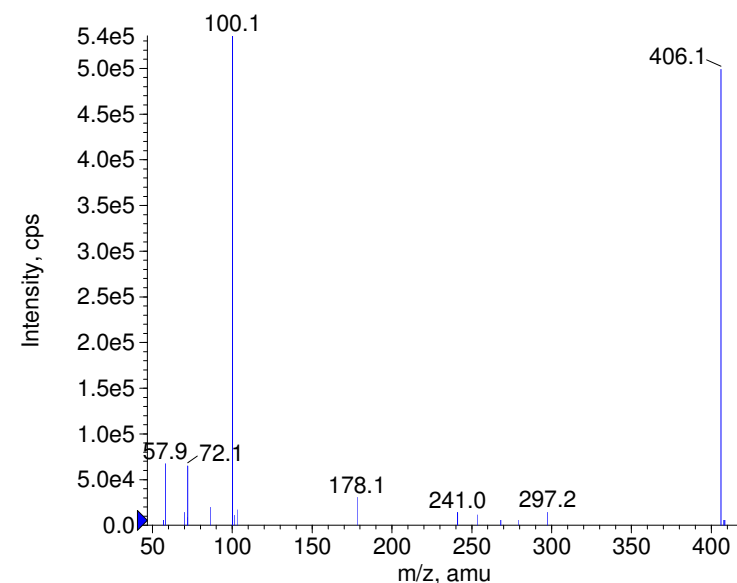
+ Clomiphene Prec(406.0) CE(35.0) RT(1.0)



+ Clomiphene Prec(406.0) CE(50.0) RT(1.0)

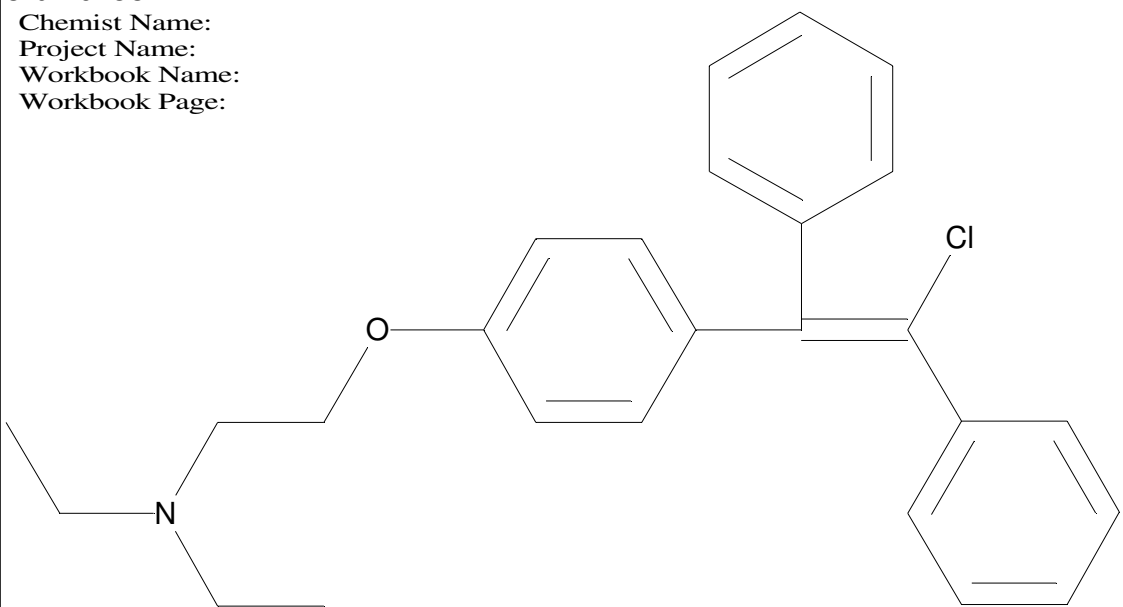


+ Clomiphene Prec(406.0) CE(99.0) RT(1.0)



C26H28NOCl

Chemist Name:
Project Name:
Workbook Name:
Workbook Page:



© Copyright 2007 by
W. Weinmann
S. Dresen
www.chemicalsoft.de

“CE (99.0)“: CE spread 35+/-15 eV