

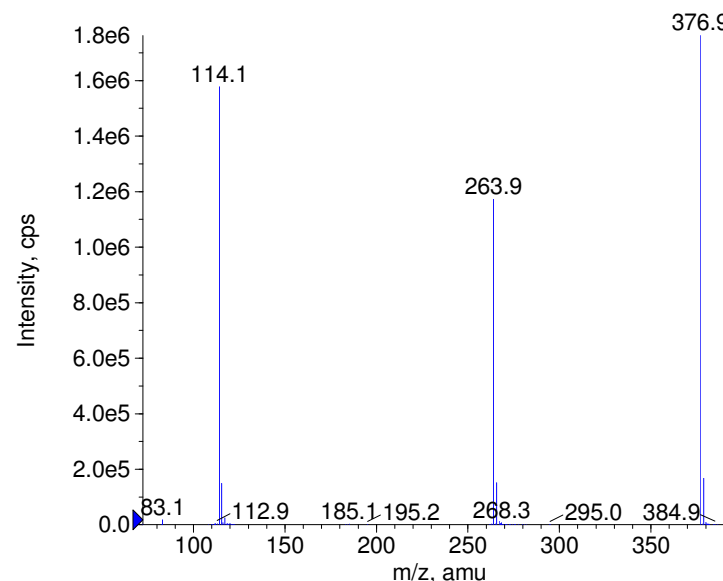
Compound Name: Bromhexine
Synonyms:
Formula: C₁₄H₂₀Br₂N₂
CAS Number: 3572-43-8
Molecular weight(amu): 373.9993
Compound Class: secretolytic
Compound ID: B011
User Value: 0.0000
Keyword:
Internal Standard: No
Comment1:

Instrument Model: QTrap
Ion Source: Turbo Spray
Polarity: Positive
Scan Type: EPI
1st Precursor m/z: 377.0000
Collision Energy1(V): 20.0000
Charge State1: 1
CAD Gas Type:
CAD Gas Value: Level 4
Retention Time(min): 0.79
Resolution: unit
Comment2:
Comment3:

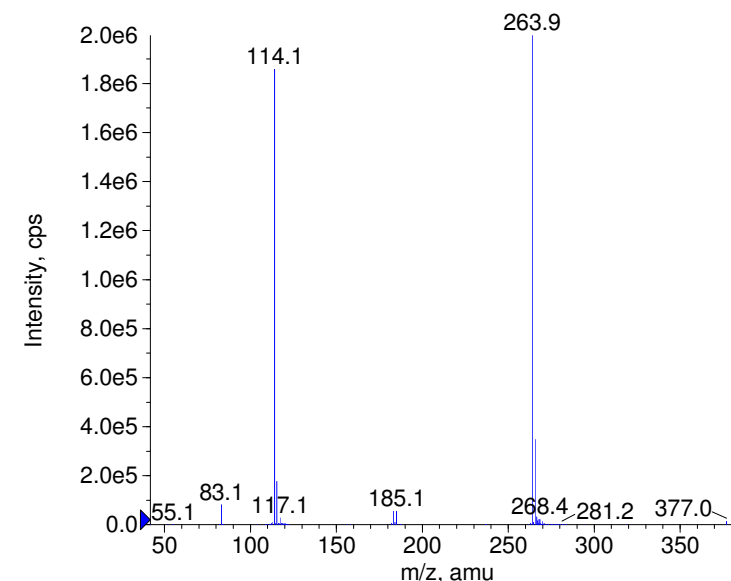
© Copyright 2007 by
W. Weinmann
S. Dresen
www.chemicalsoft.de

“CE (99.0)“: CE spread 35+/-15 eV

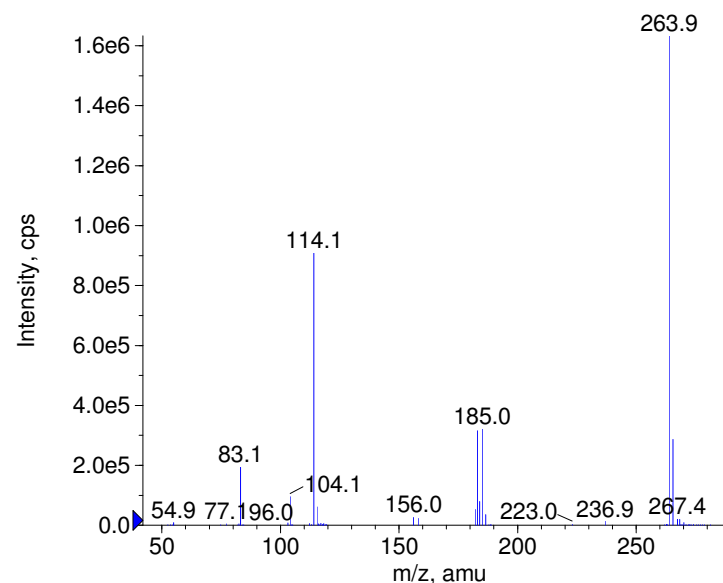
+ Bromhexine Prec(377.0) CE(20.0) RT(0.8)



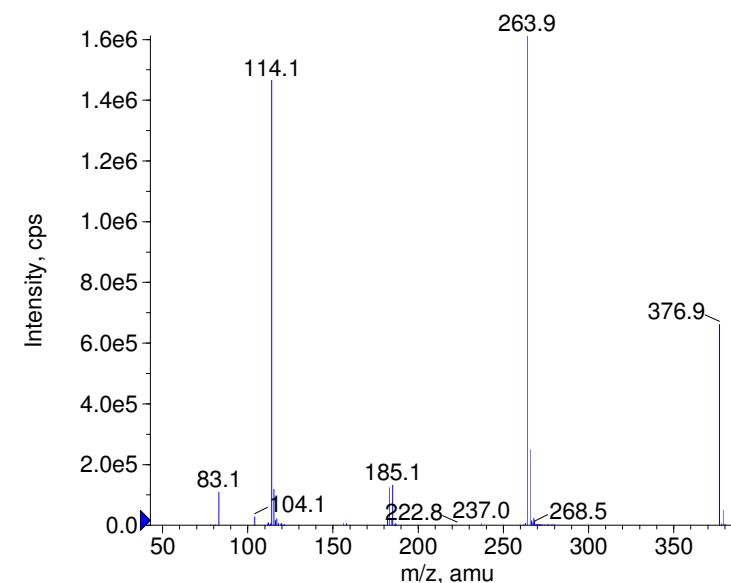
+ Bromhexine Prec(377.0) CE(35.0) RT(0.8)



+ Bromhexine Prec(377.0) CE(50.0) RT(0.8)

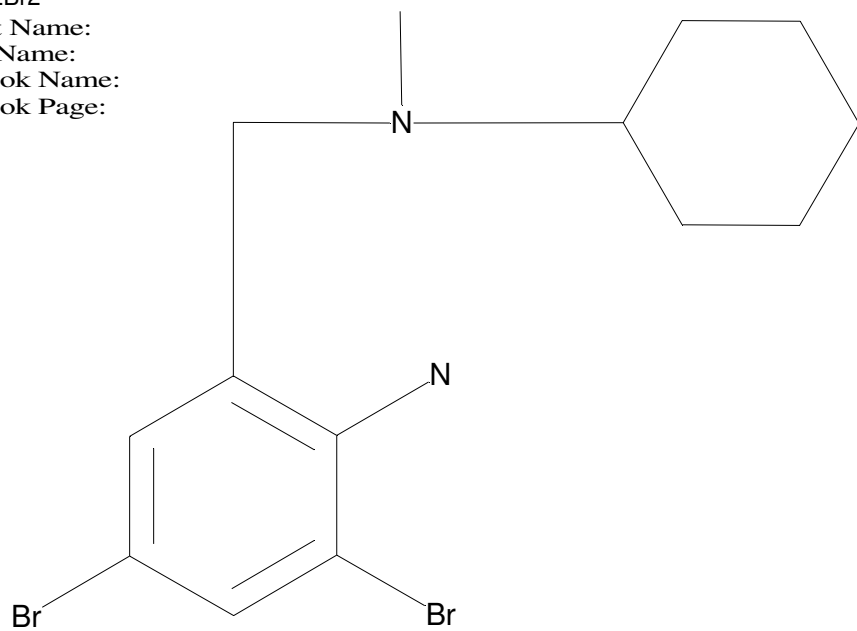


+ Bromhexine Prec(377.0) CE(99.0) RT(0.8)



C14H20N2Br2

Chemist Name:
Project Name:
Workbook Name:
Workbook Page:



© Copyright 2007 by
W. Weinmann
S. Dresen
www.chemicalsoft.de

“CE (99.0)“: CE spread 35+/-15 eV