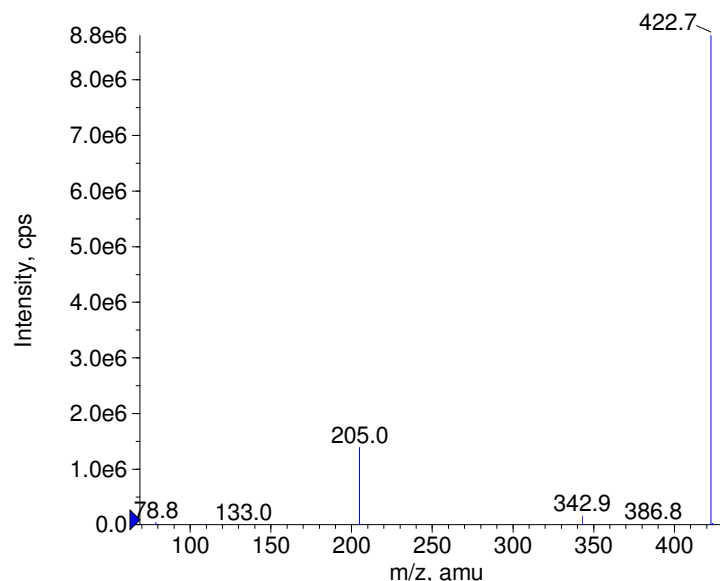
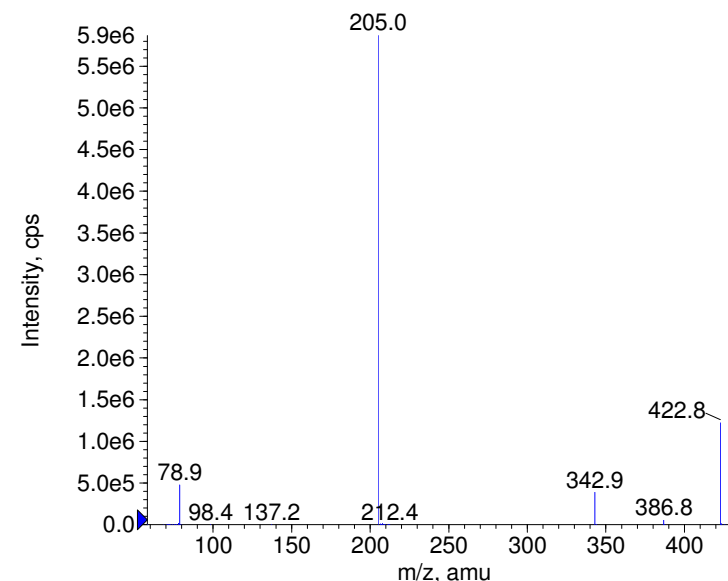


Compound Name: Bromchlorophen
 Synonyms:
 Formula: C13H8Br2Cl2O2
 CAS Number: 15435-29-7
 Molecular weight(amu): 423.8268
 Compound Class: antiseptic, disinfectant
 Compound ID: B150
 User Value: 0.0000
 Keyword:
 Internal Standard: No
 Comment1:

■ - Bromchlorophen Prec(423.0) CE(-20.0) RT(7.9)

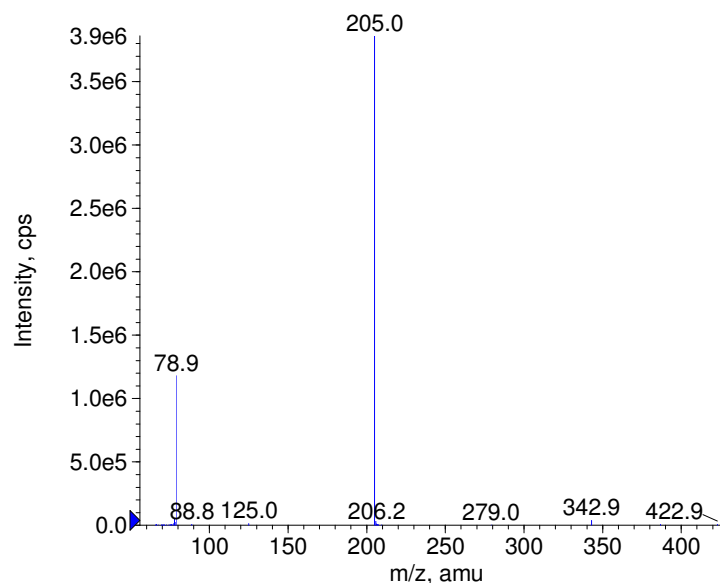


■ - Bromchlorophen Prec(423.0) CE(-35.0) RT(7.9)

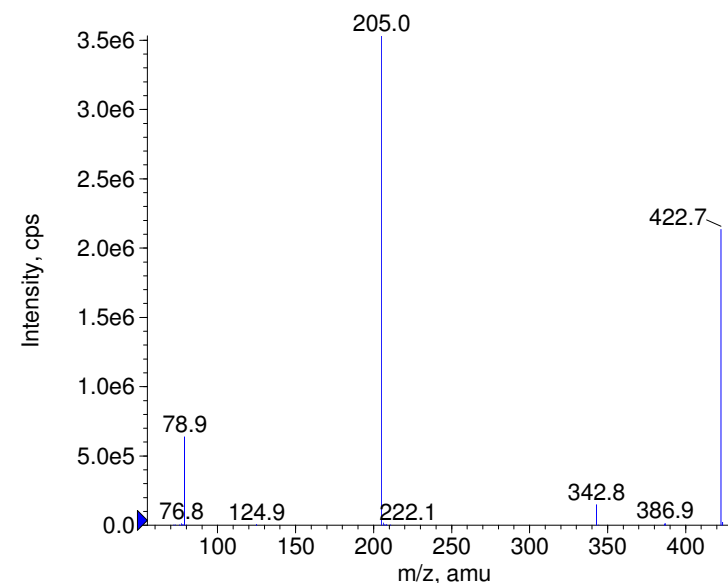


Instrument Model: QTrap
 Ion Source: Turbo Spray
 Polarity: Negative
 Scan Type: EPI
 1st Precursor m/z: 423.0000
 Collision Energy1(V): -20.0000
 Charge State1: -1
 CAD Gas Type:
 CAD Gas Value: Level 4
 Retention Time(min): 7.92
 Resolution: unit
 Comment2:
 Comment3:

■ - Bromchlorophen Prec(423.0) CE(-50.0) RT(8.0)



■ - Bromchlorophen Prec(423.0) CE(-99.0) RT(8.0)

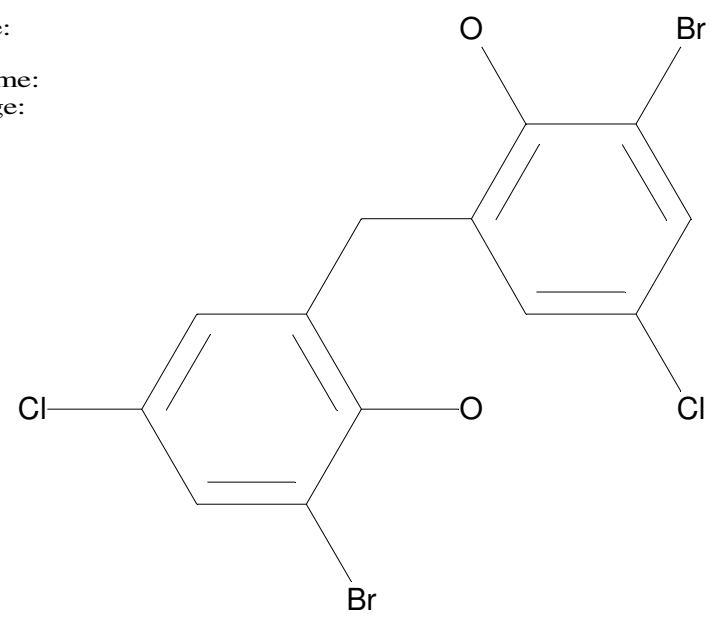


© Copyright 2007 by
 W. Weinmann
 S. Dresen
www.chemicalsoft.de

“CE (99.0)”: CE spread 35+/-15 eV

C13H8O2Cl2Br2

Chemist Name:
Project Name:
Workbook Name:
Workbook Page:



© Copyright 2007 by
W. Weinmann
S. Dresen
www.chemicalsoft.de

“CE (99.0)“: CE spread 35+/-15 eV