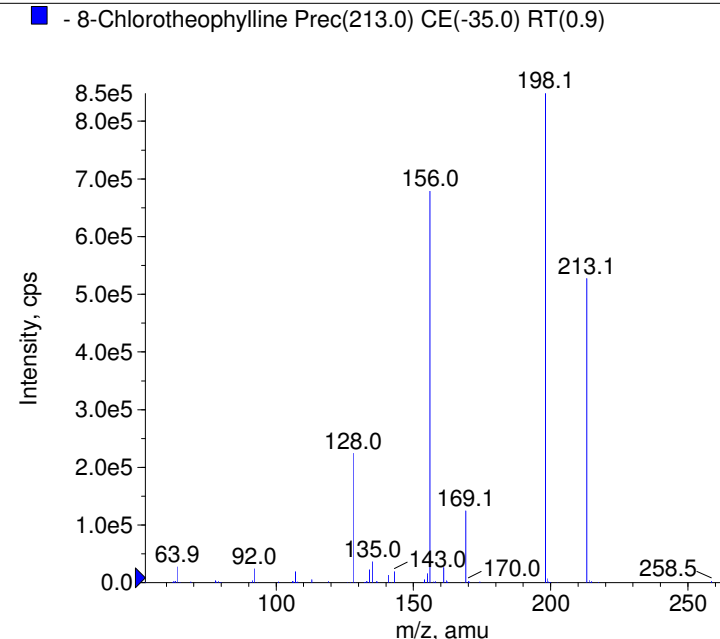
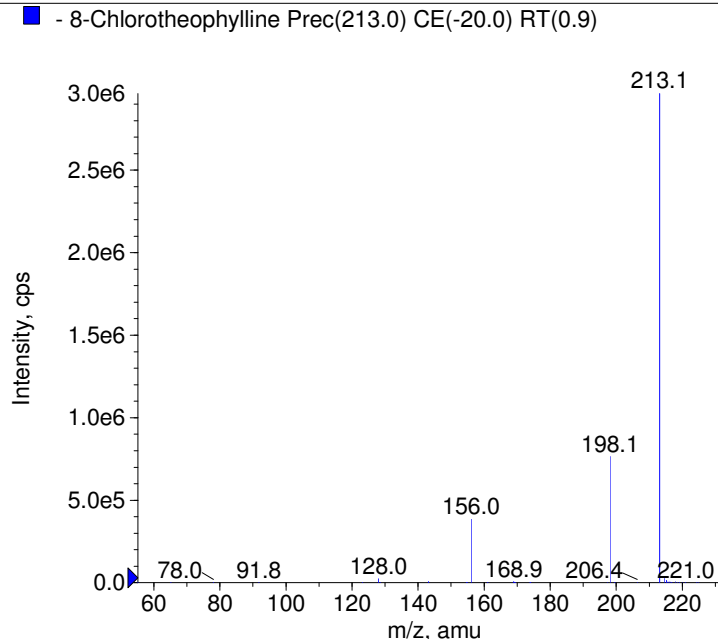
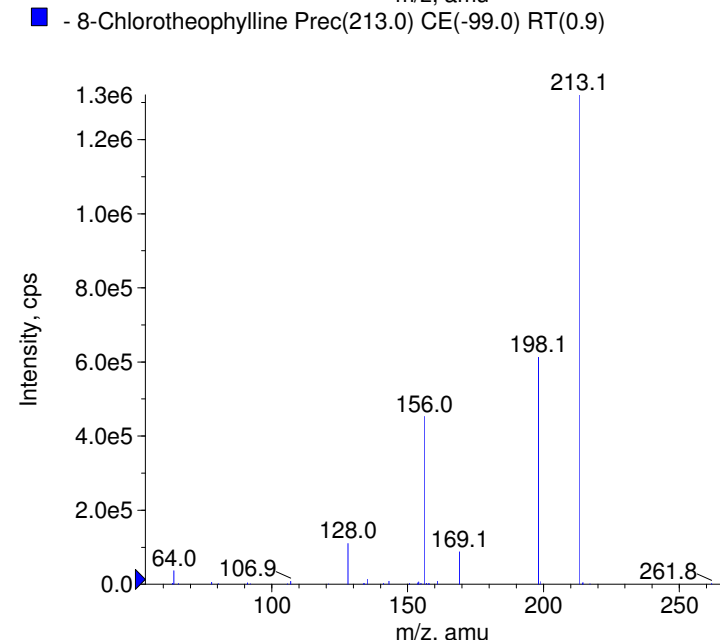
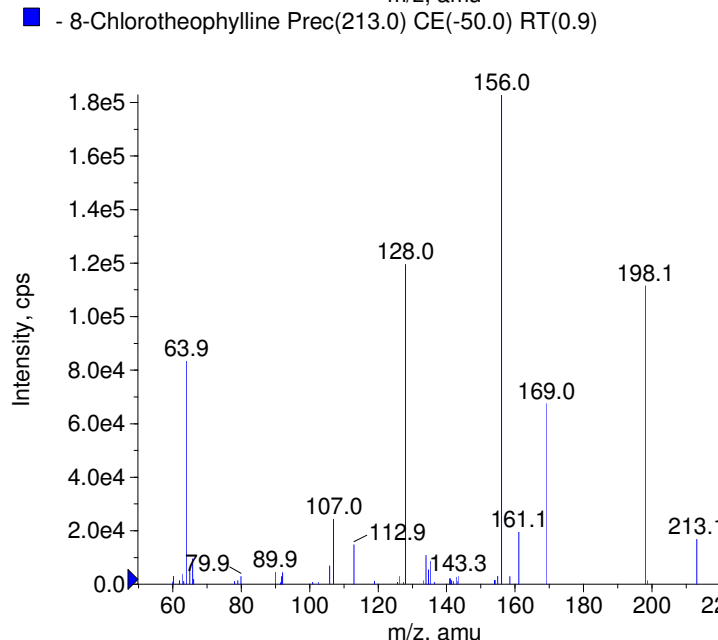


Compound Name: 8-Chlorotheophylline  
 Synonyms:  
 Formula: C7H7ClN4O2  
 CAS Number: 85-18-7  
 Molecular weight(amu): 214.0257  
 Compound Class: analeptic  
 Compound ID: C114  
 User Value: 0.0000  
 Keyword:  
 Internal Standard: No  
 Comment1:

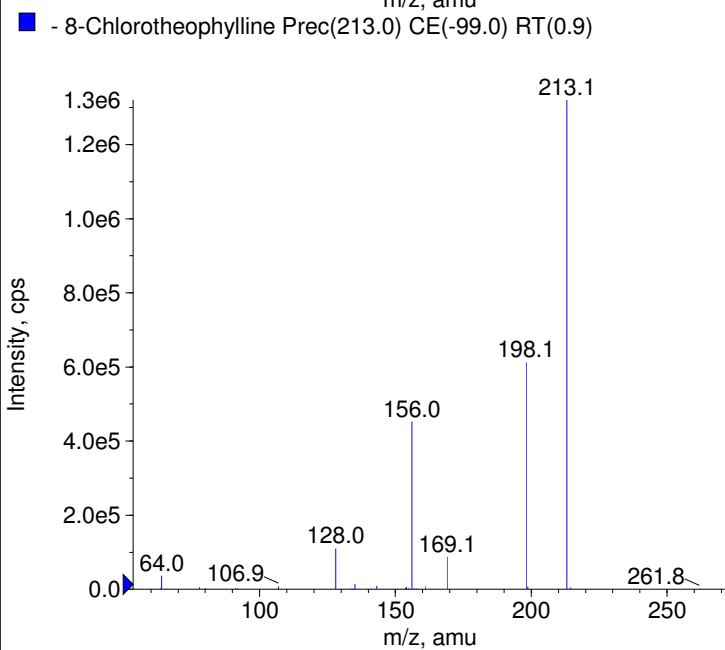
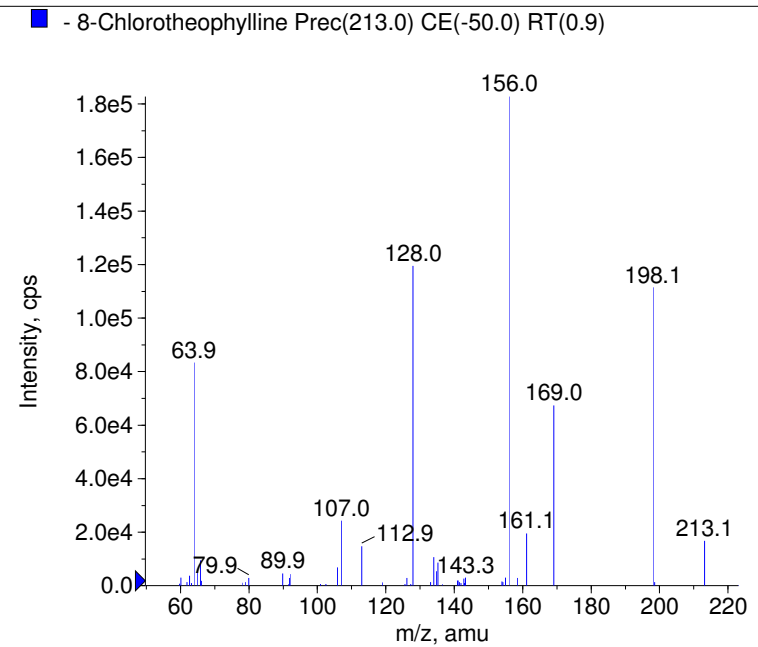
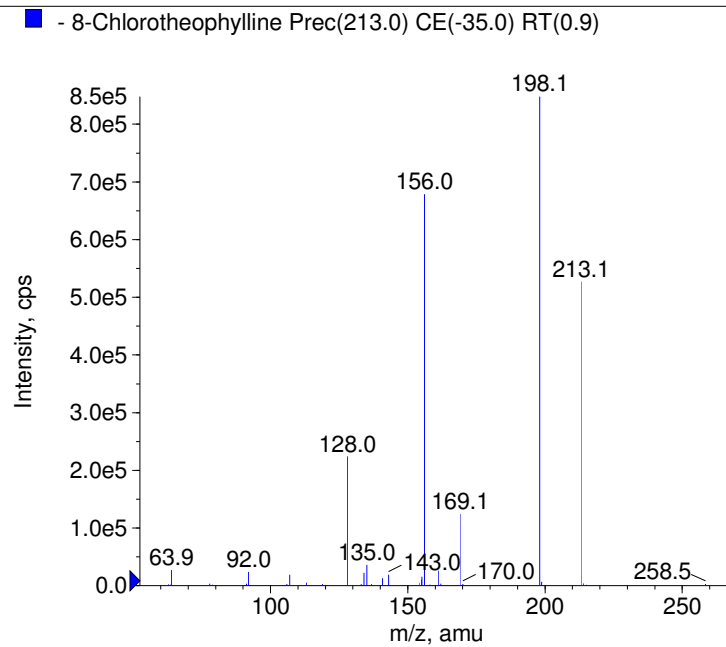
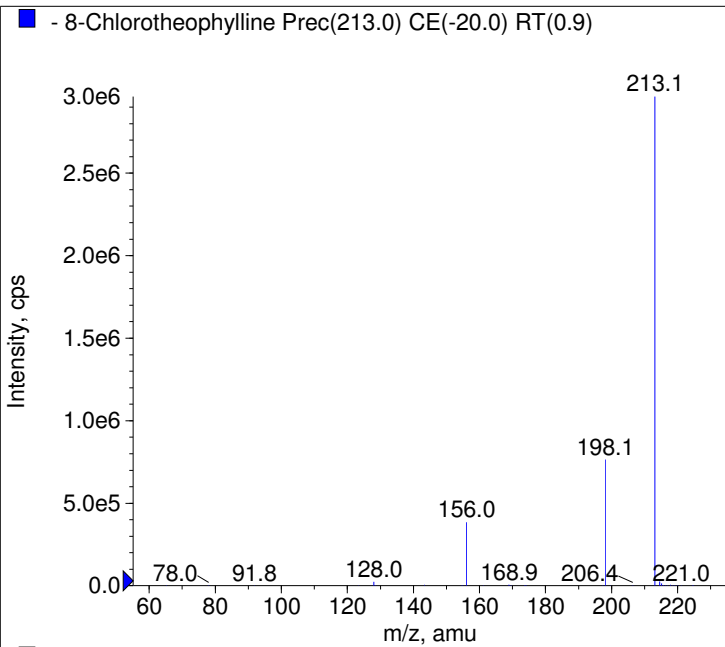


Instrument Model: QTrap  
 Ion Source: Turbo Spray  
 Polarity: Negative  
 Scan Type: EPI  
 1st Precursor m/z: 213.0000  
 Collision Energy1(V): -20.0000  
 Charge State1: -1  
 CAD Gas Type:  
 CAD Gas Value: Level 4  
 Retention Time(min): 0.87  
 Resolution: unit  
 Comment2:  
 Comment3:



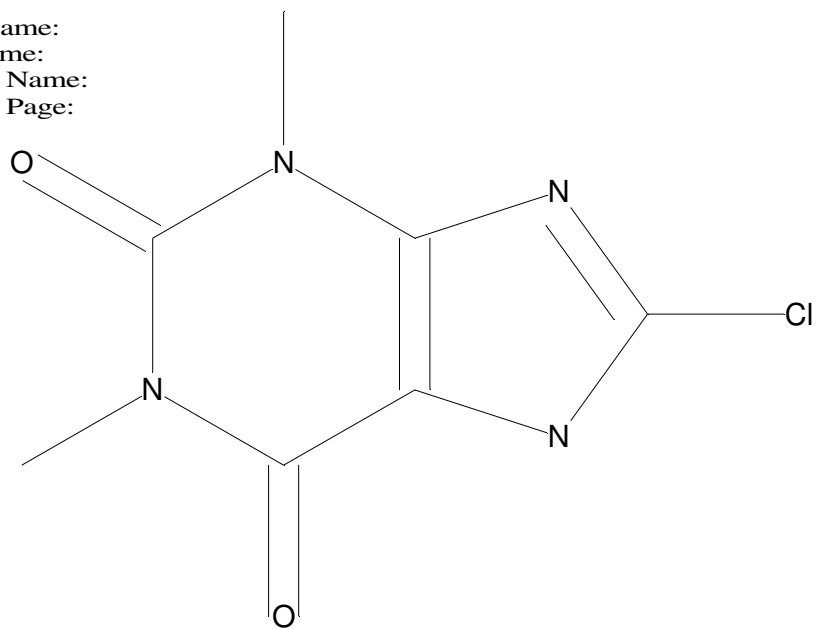
© Copyright 2007 by  
 W. Weinmann  
 S. Dresen  
[www.chemicalsoft.de](http://www.chemicalsoft.de)

“CE (99.0)”: CE spread 35+/-15 eV



C7H7N4O2Cl

Chemist Name:  
Project Name:  
Workbook Name:  
Workbook Page:



© Copyright 2007 by  
W. Weinmann  
S. Dresen  
[www.chemicalsoft.de](http://www.chemicalsoft.de)

“CE (99.0)“: CE spread 35+/-15 eV